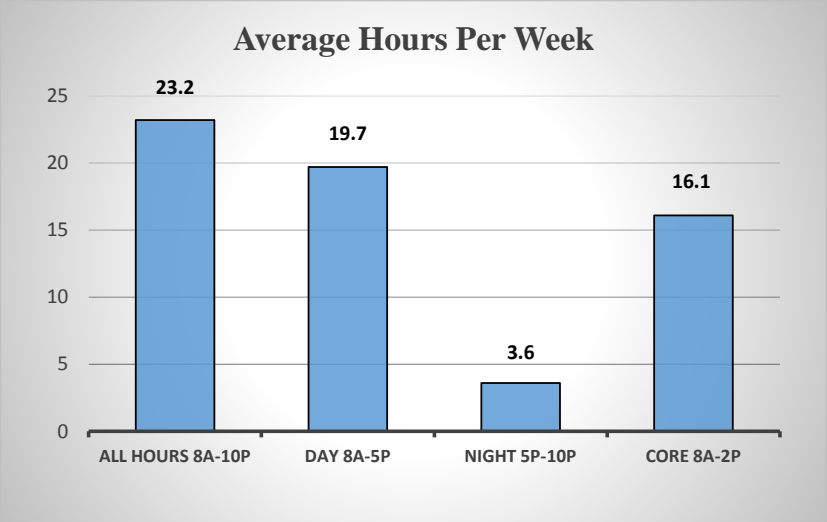


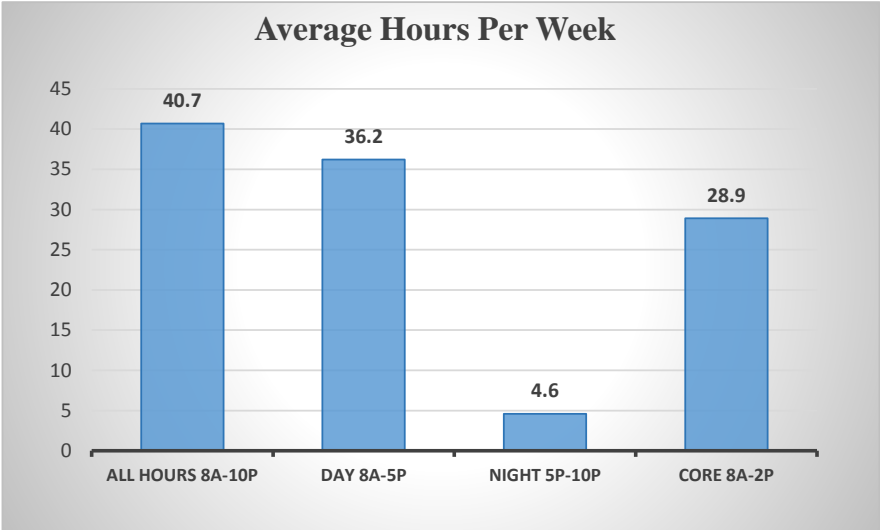
UNC-PEMBROKE

SPACE UTILIZATION ANALYSIS, FALL 2014

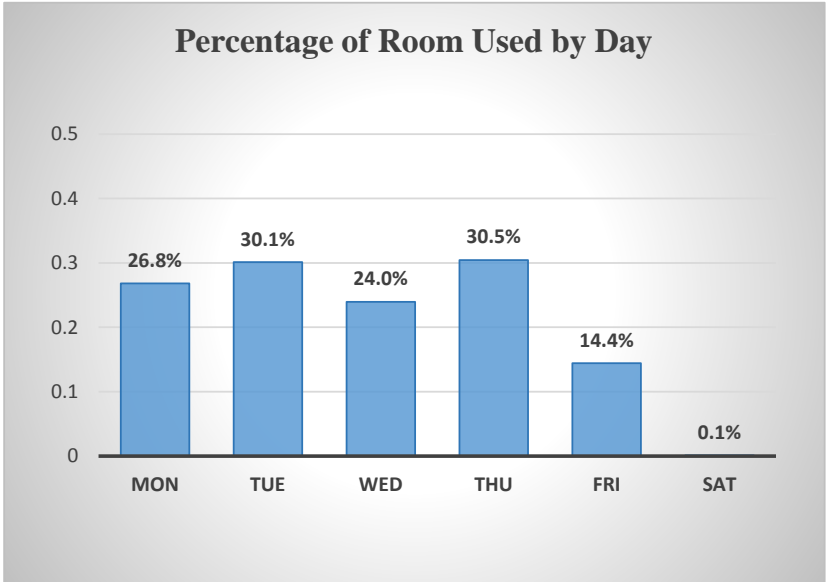
Classroom Utilization



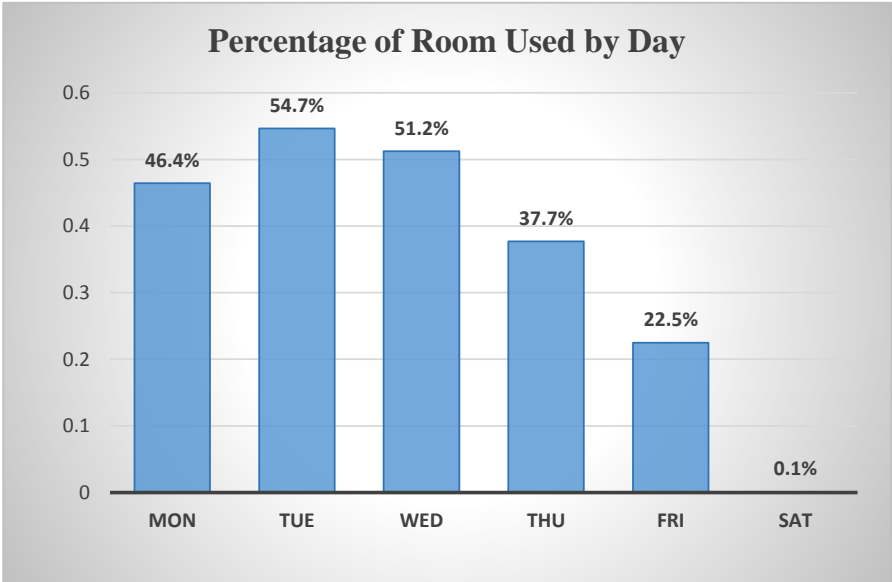
Utilization for Classrooms & Instructional Labs



Percentage of Room Used by Day

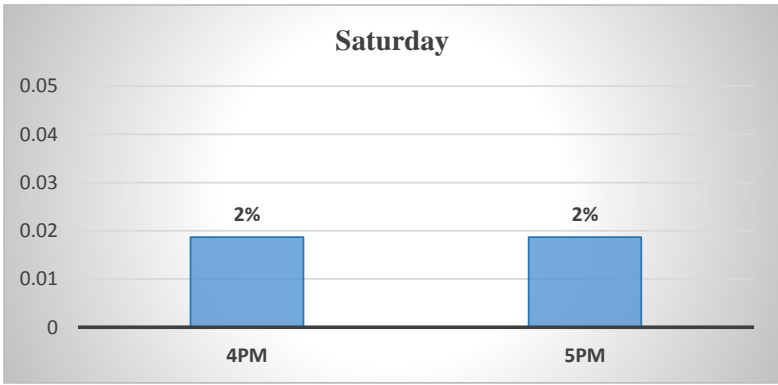
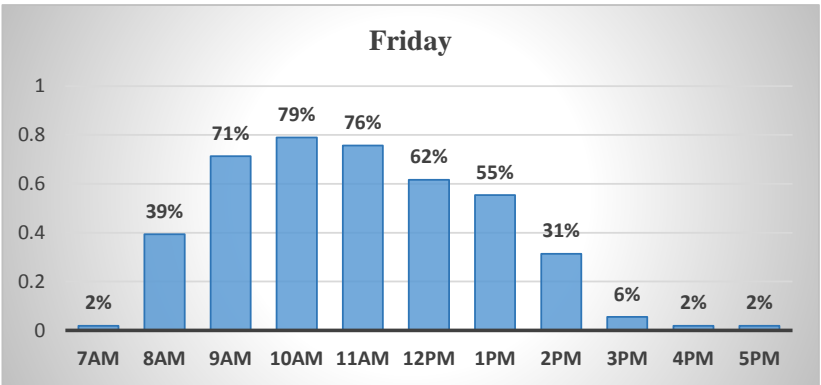
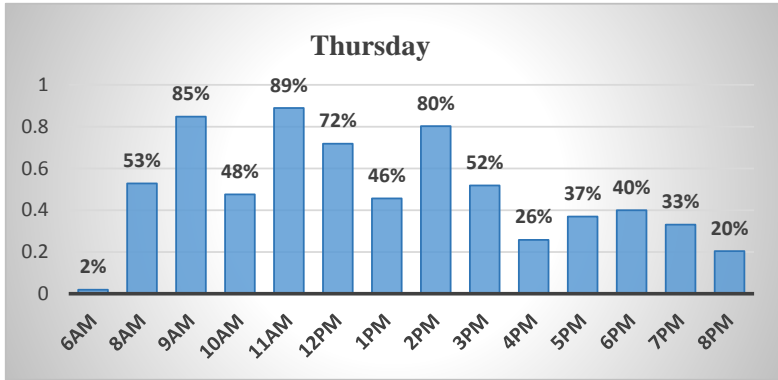
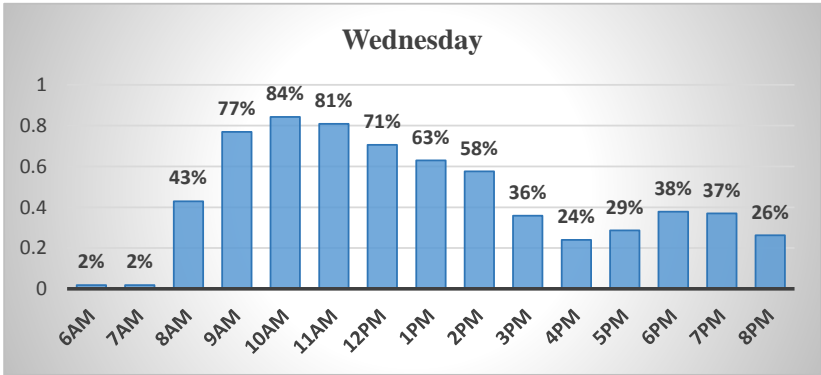
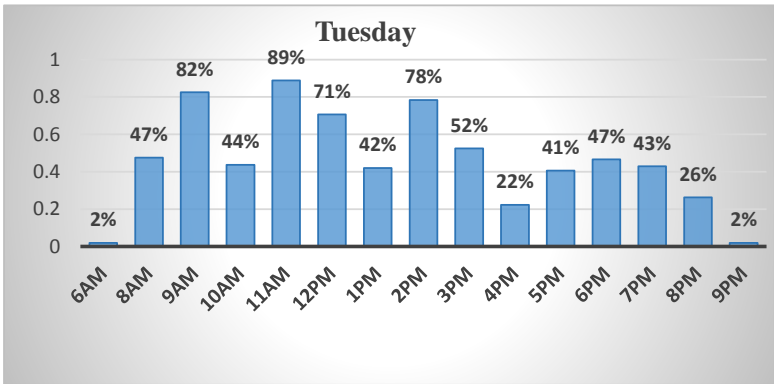
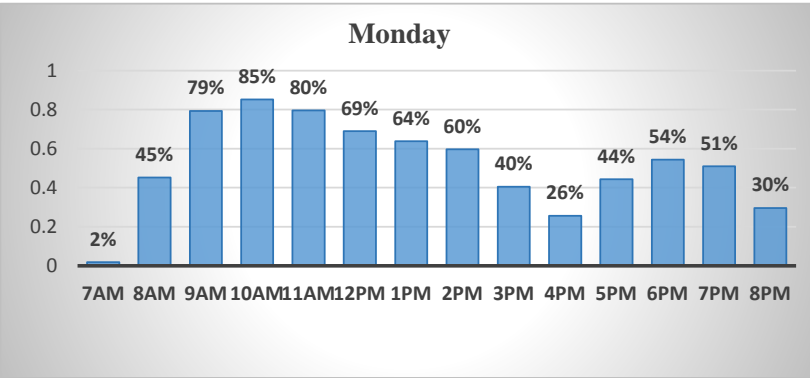


Percentage of Room Used by Day



UNC-PEMBROKE SPACE UTILIZATION ANALYSIS, FALL 2014

Utilization by Day and Hour



UNC-PEMBROKE

SPACE UTILIZATION ANALYSIS, FALL 2014

Square Feet of Academic Facilities Per FTE Student

ASF of Academic Facilities	FTE Enrollment	Fall 2014	Fall 2013	Fall 2012	Fall 2011	Fall 2010
474,709	5,525	86	87	86	79	72

Assignable Area Per Student Station for Classrooms

No. of Rooms	No. of Student Stations	Avg. Student Station per room	Total Sq.FT
106	3689	35	84,093

Average Weekly Room Hours of Instruction in Classrooms

Total Hours	Avg. Day time Hrs	Avg. Nighttime Hrs
2,463	19.7	3.6

Average Weekly Room Hours of Instruction in Laboratories

Total Hours	Avg. Day time Hrs	Avg. Nighttime Hrs
541.5	16.5	1

Source: UNC General Administration Facilities Inventory and Utilization Study 2014