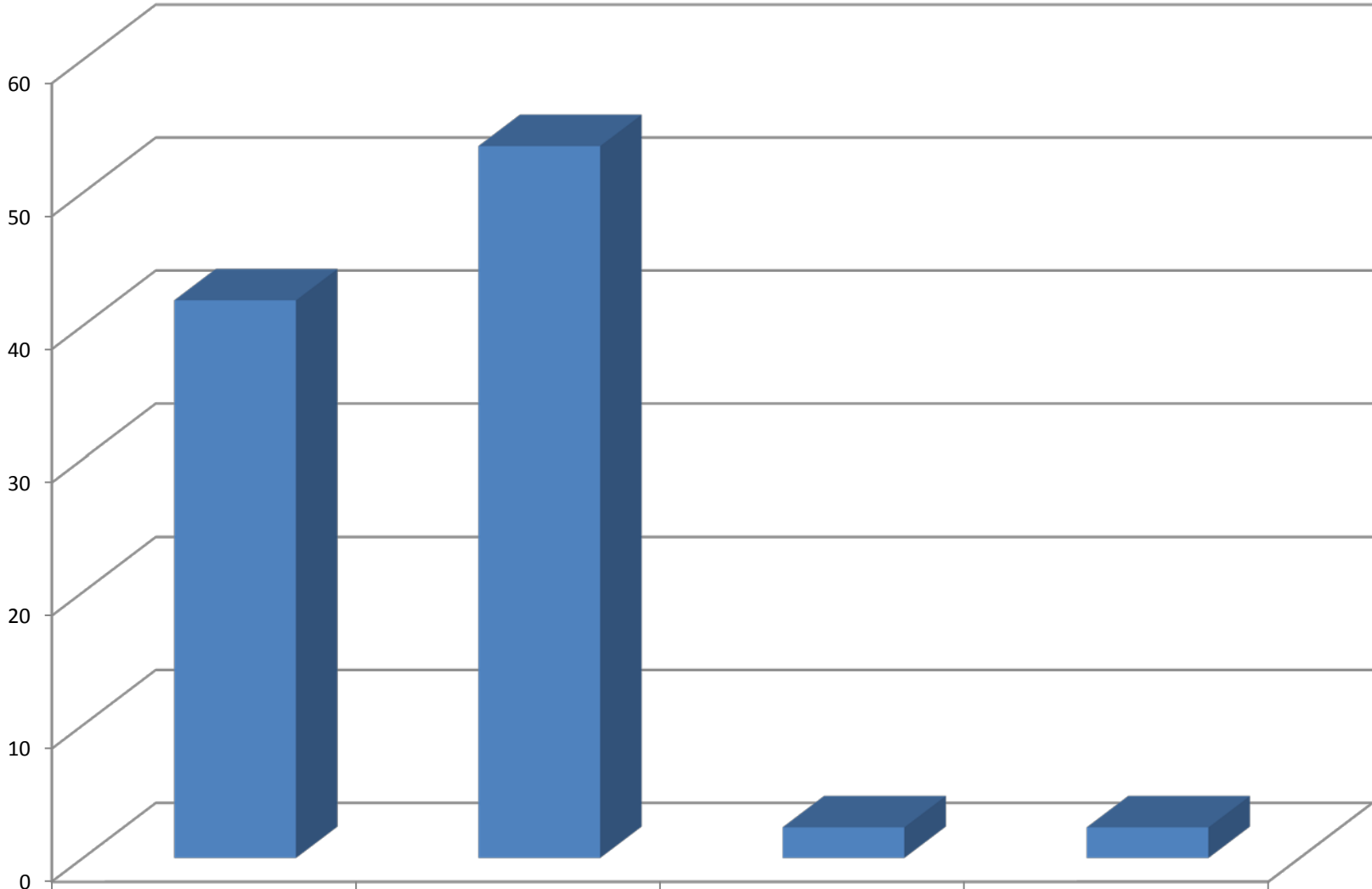


D1a. In general how safe do you feel in campus residence halls during the day/early evening?



UNCN (N=43)

Very Safe

41.9

Pretty Safe

53.5

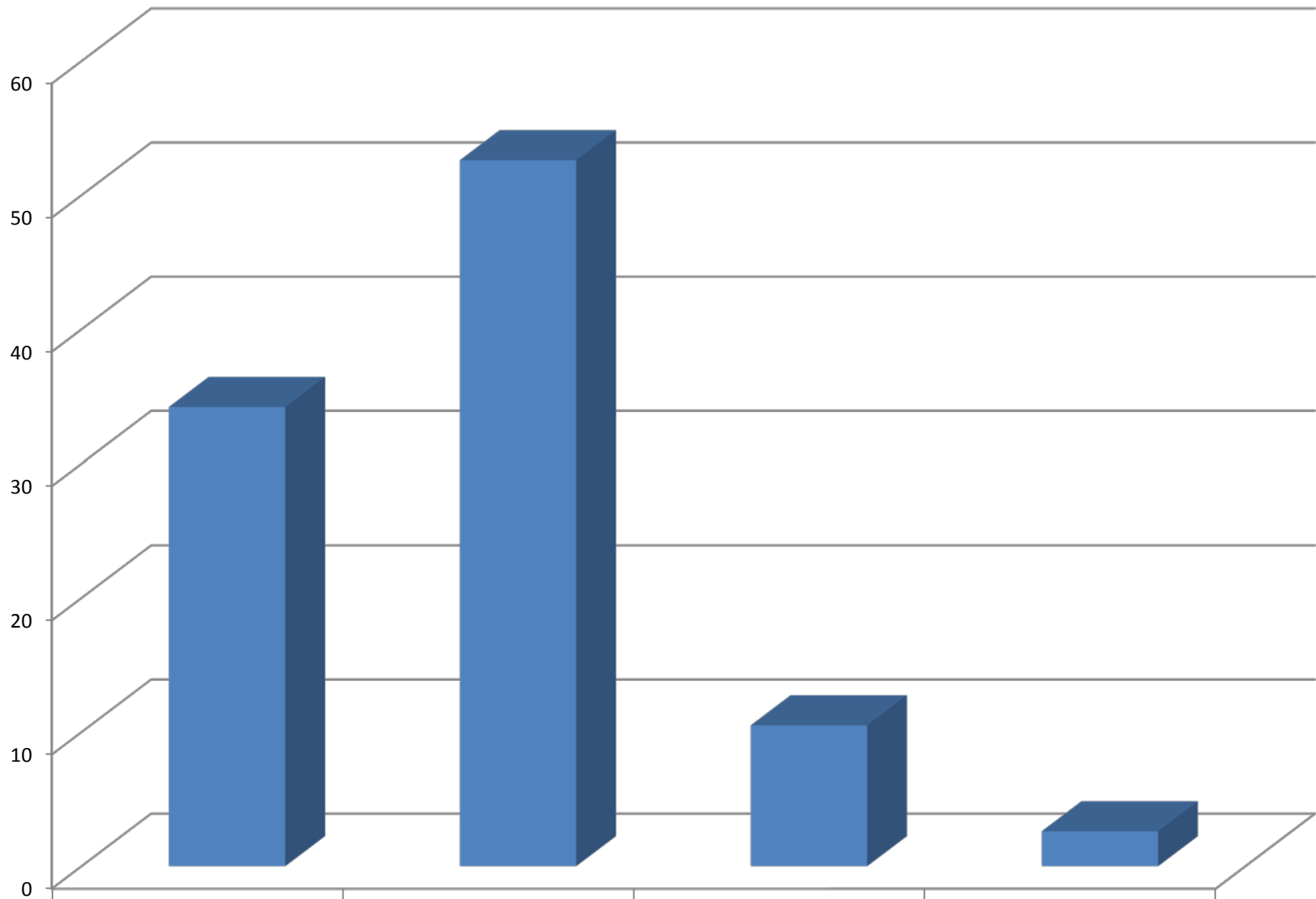
Not Very Safe

2.3

Not at all Safe

2.3

D1b. In general how safe do you feel in campus residence halls at night?



UNCP (N=38)

Very Safe

34.2

Pretty Safe

52.6

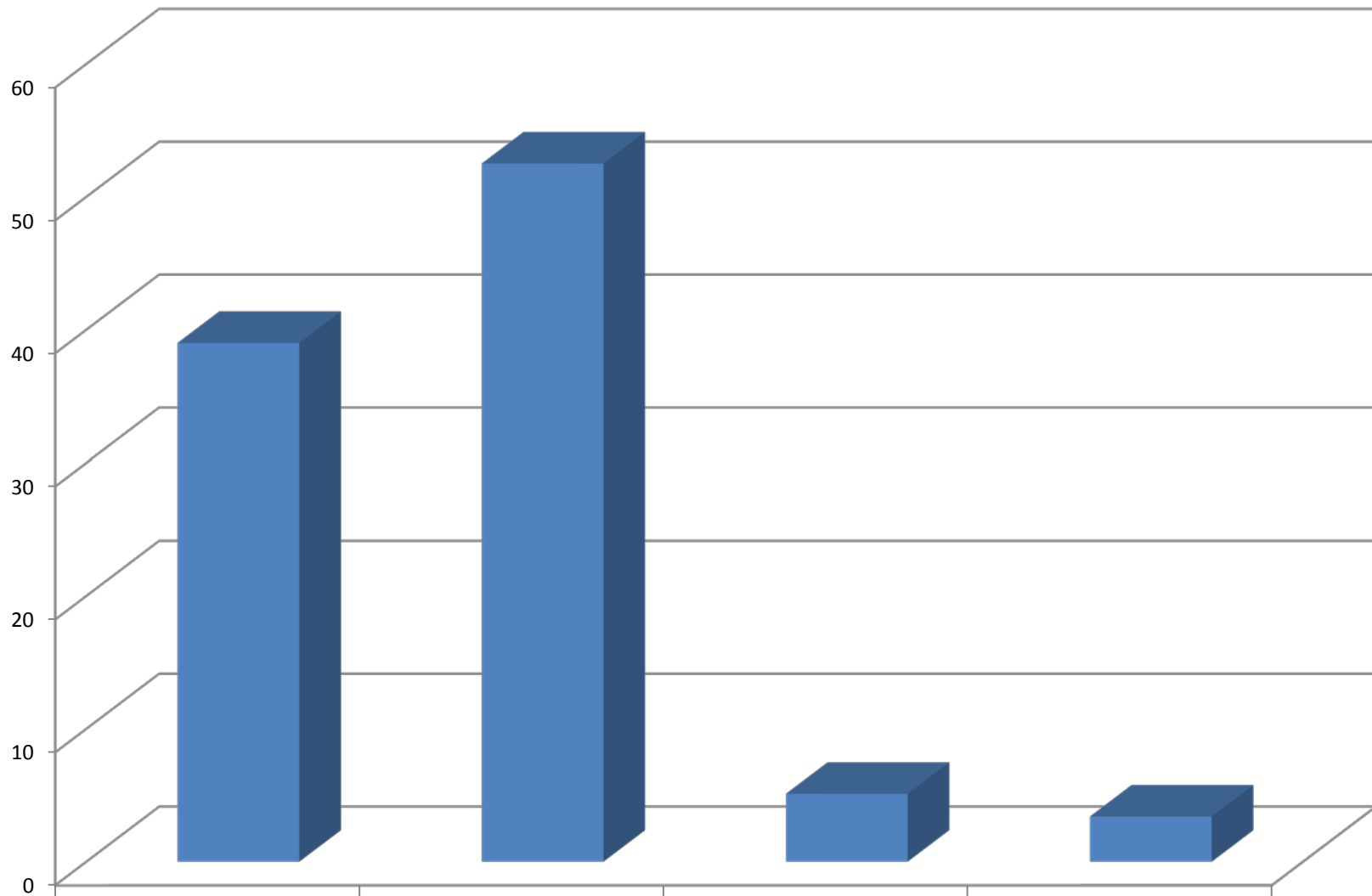
Not Very Safe

10.5

Not at all Safe

2.6

D1c. In general how safe do you feel using the parking lots, garages and/or decks on campus during the day/early evening?



UNCN (N=59)

Very Safe

39

Pretty Safe

52.5

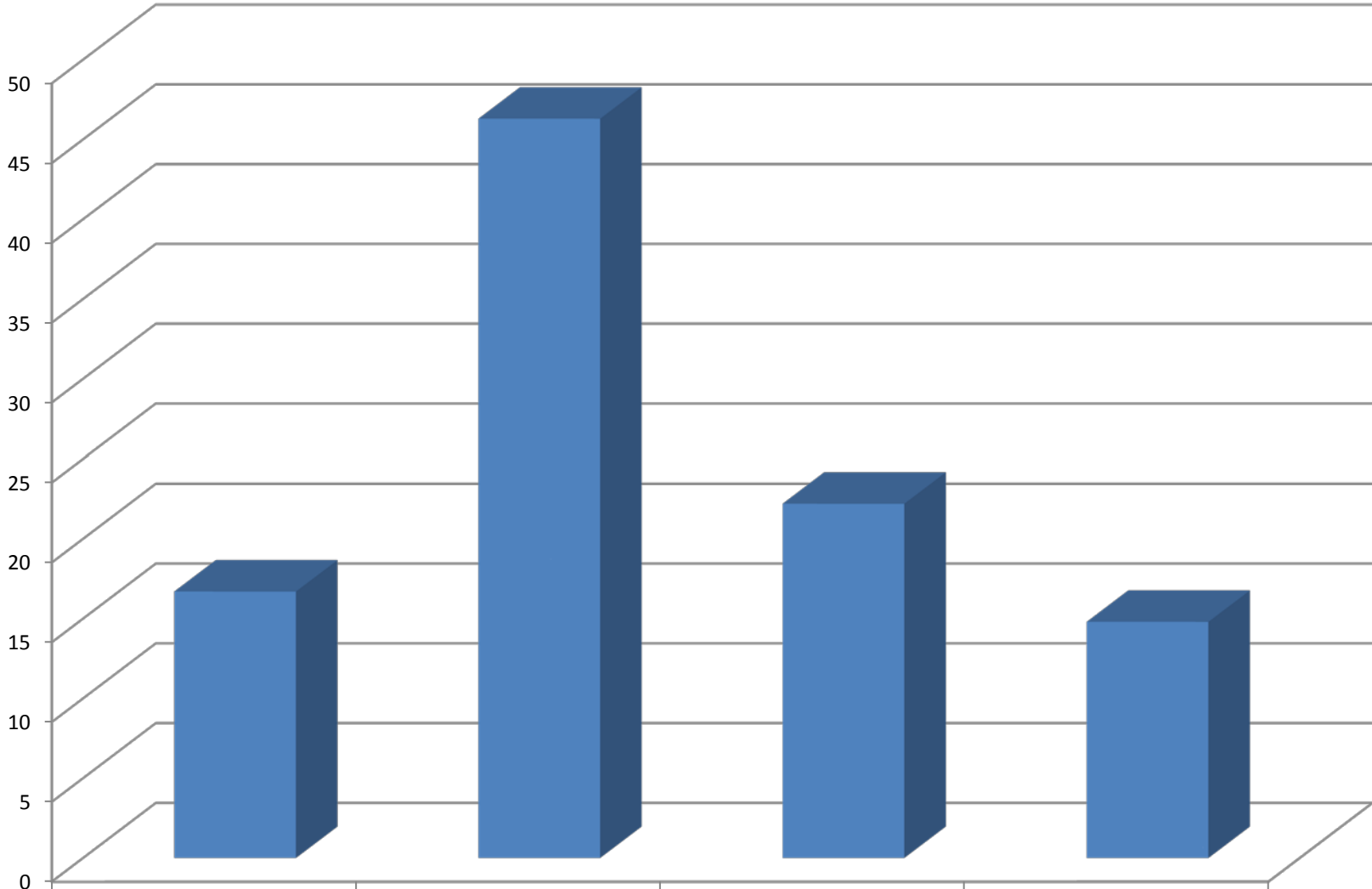
Not Very Safe

5.1

Not at all Safe

3.4

D1d. In general how safe do you feel using the parking lots, garages and/or decks on campus at night?



UNCPC (N=54)

Very Safe

16.7

Pretty Safe

46.3

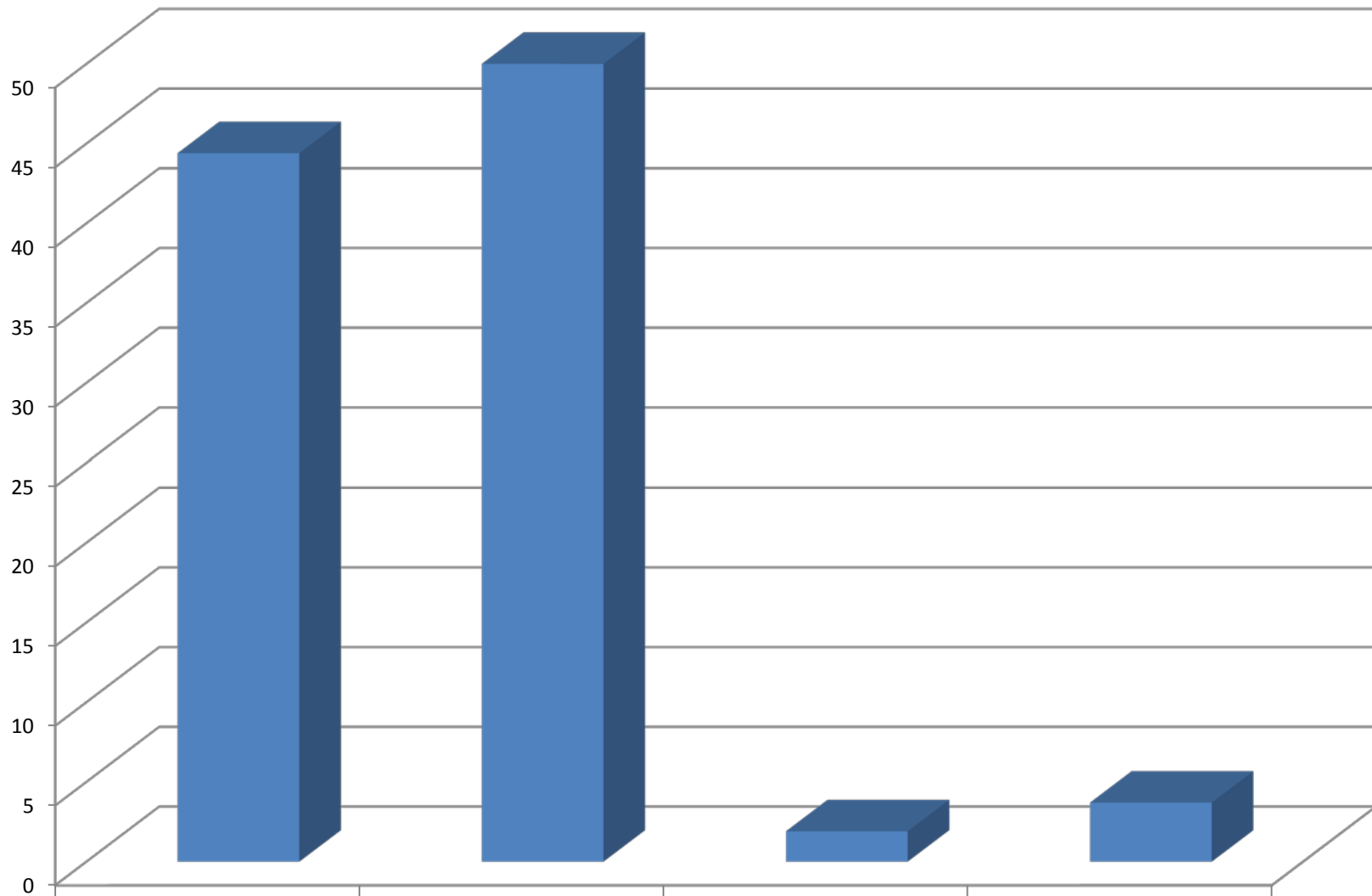
Not Very Safe

22.2

Not at all Safe

14.8

D1e. In general how safe do you feel in non-residence buildings on campus during the day/early evening (e.g., classrooms, libraries etc)?



UNCPL (N=54)

Very Safe

44.4

Pretty Safe

50

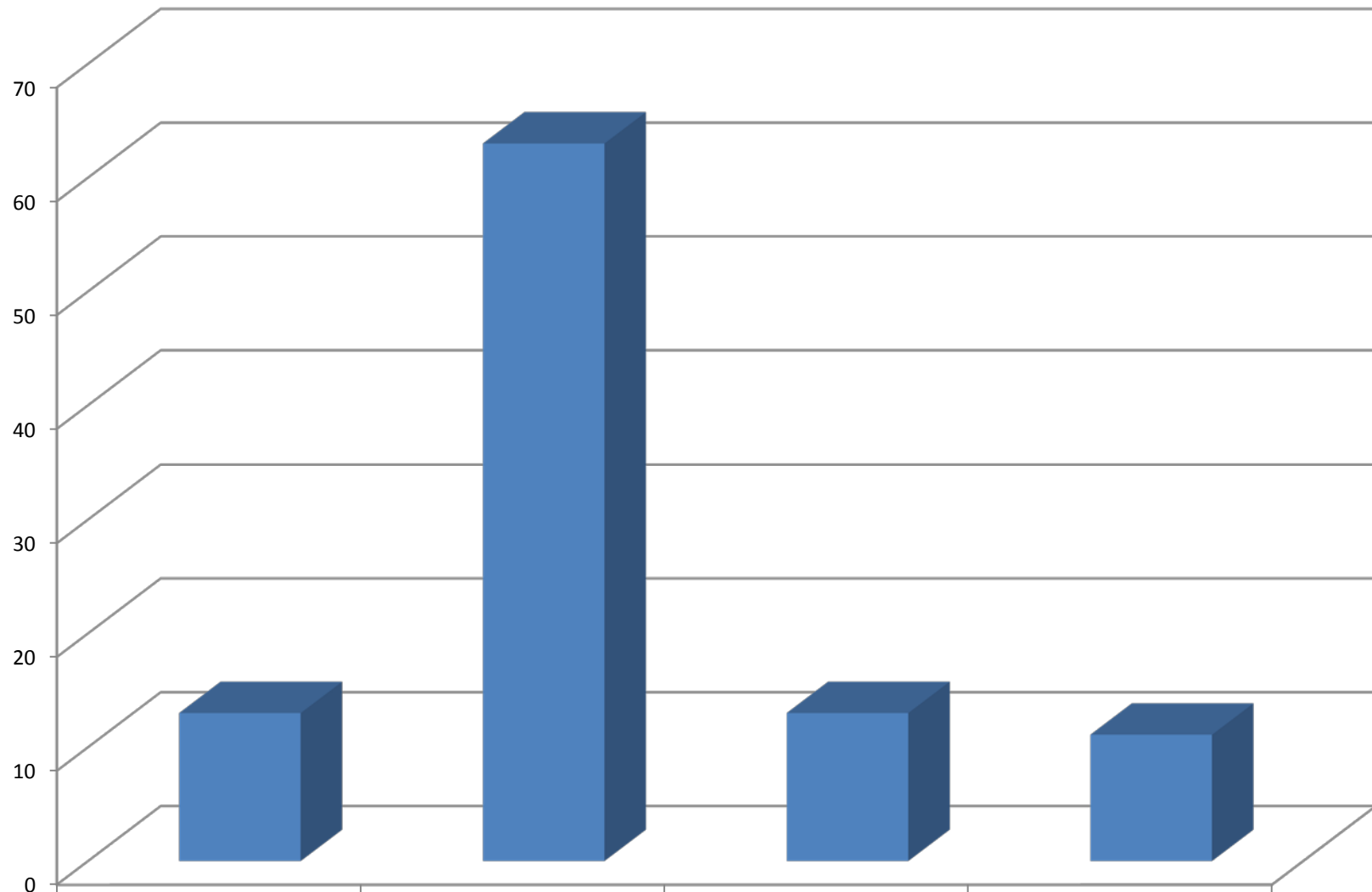
Not Very Safe

1.9

Not at all Safe

3.7

D1f. In general how safe do you feel in non-residence buildings on campus at night (e.g., classrooms, libraries etc)?



UNCP (N=54)

Very Safe

13

Pretty Safe

63

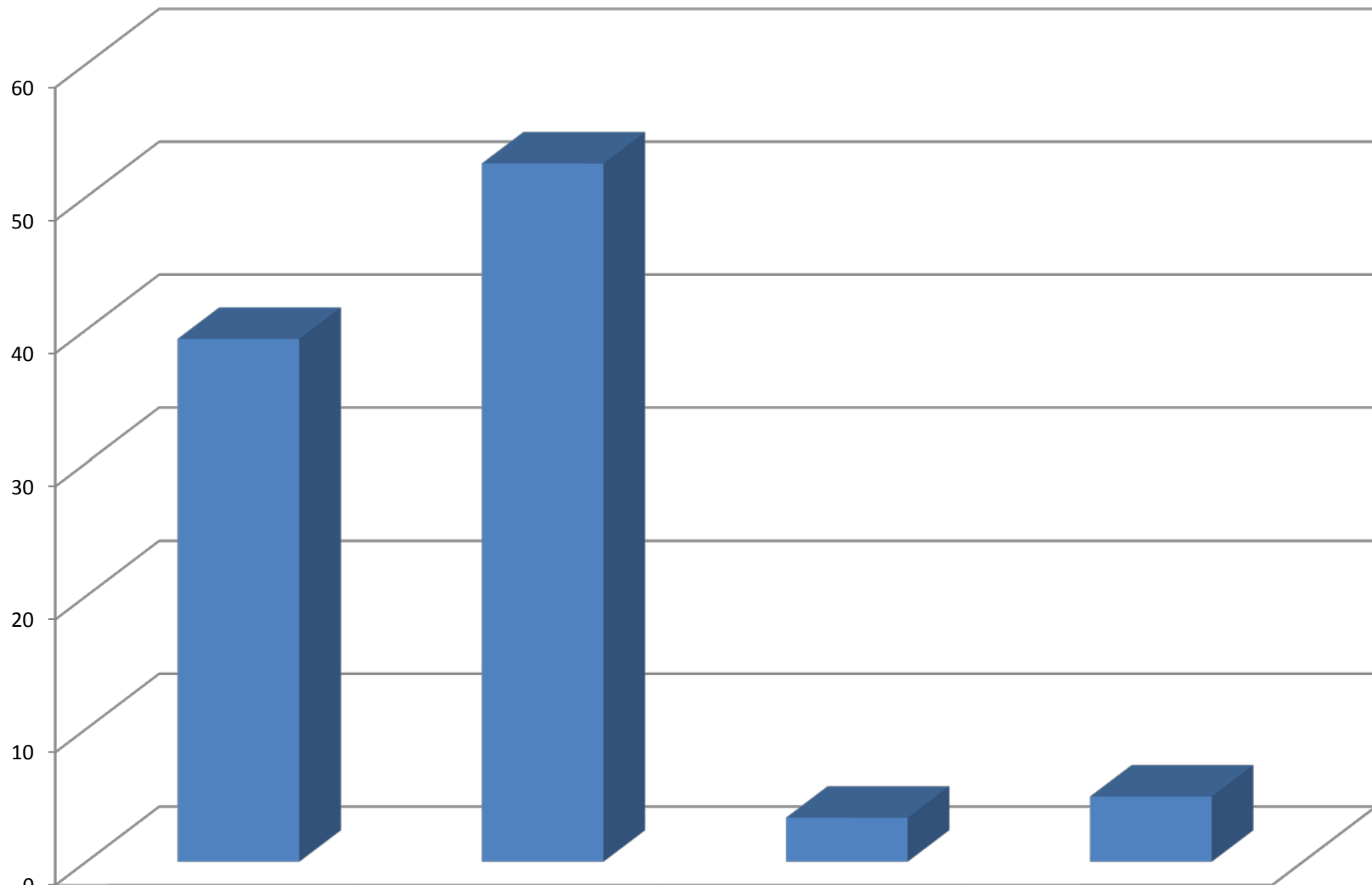
Not Very Safe

13

Not at all Safe

11.1

D1g. In general how safe do you feel outside on the grounds of the campus during the day/early evening?



UNCN (N=61)

Very Safe

39.3

Pretty Safe

52.5

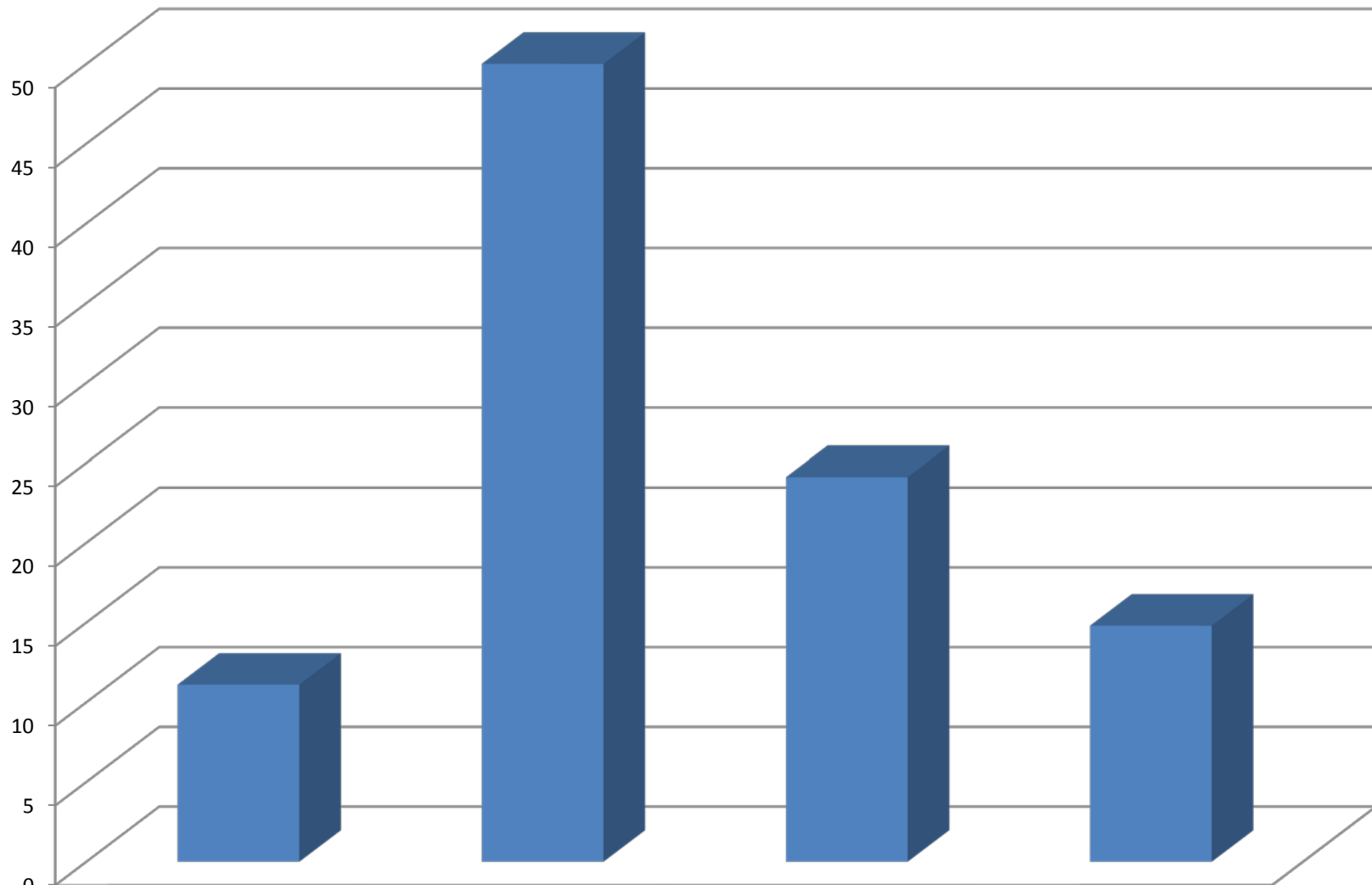
Not Very Safe

3.3

Not at all Safe

4.9

D1h. In general how safe do you feel outside on the grounds of the campus at night?



UNCN (N=54)

Very Safe

11.1

Pretty Safe

50

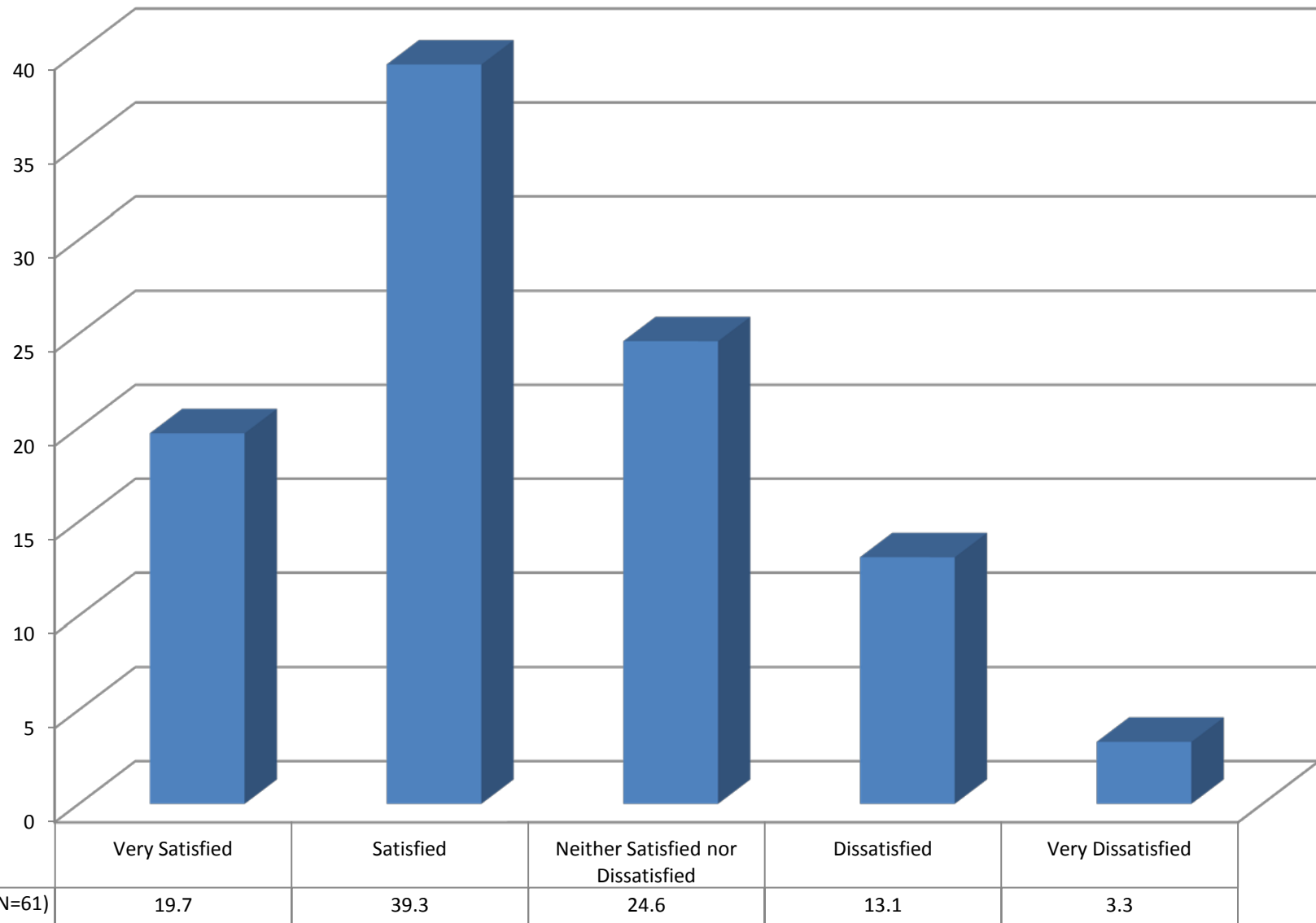
Not Very Safe

24.1

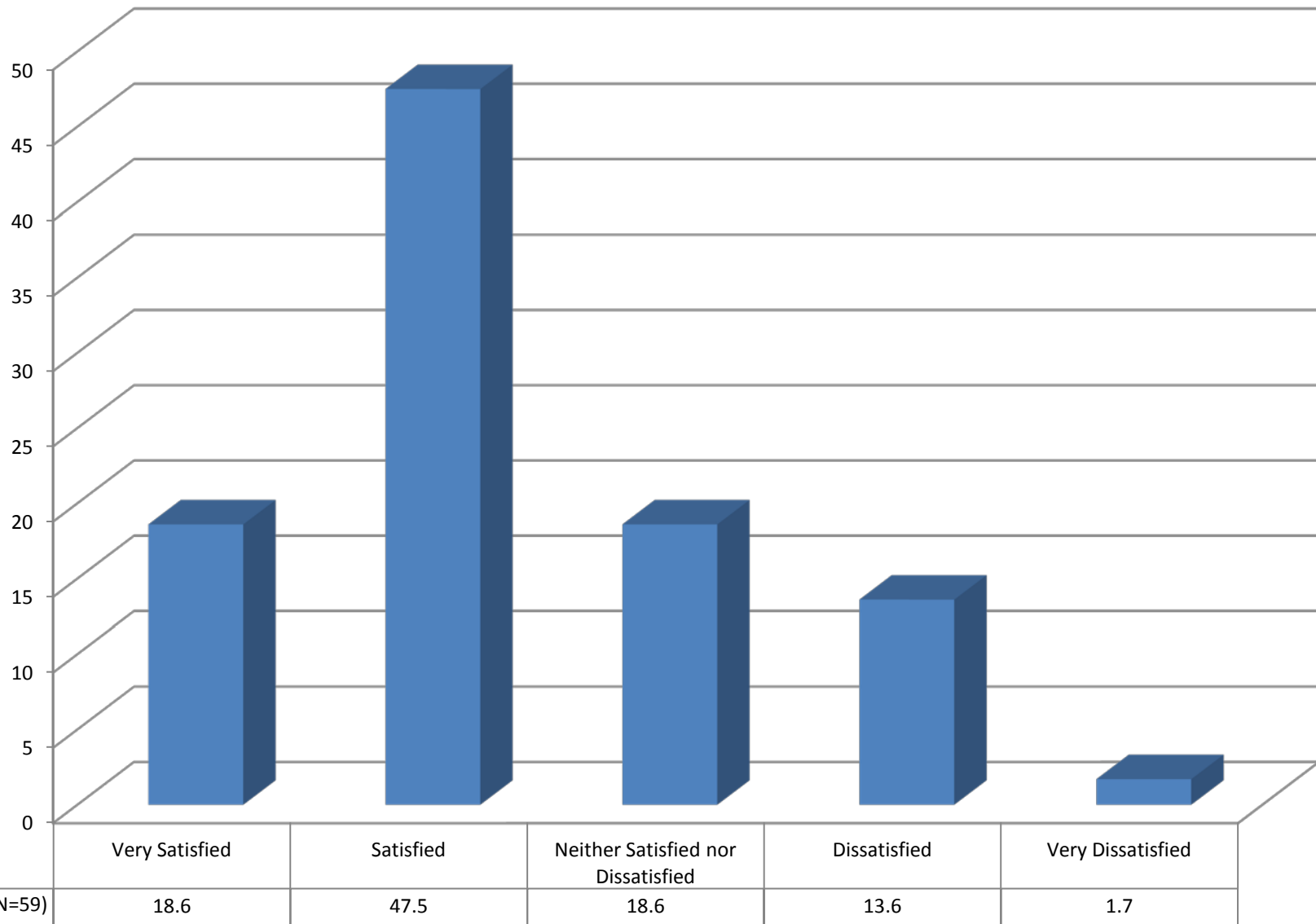
Not at all Safe

14.8

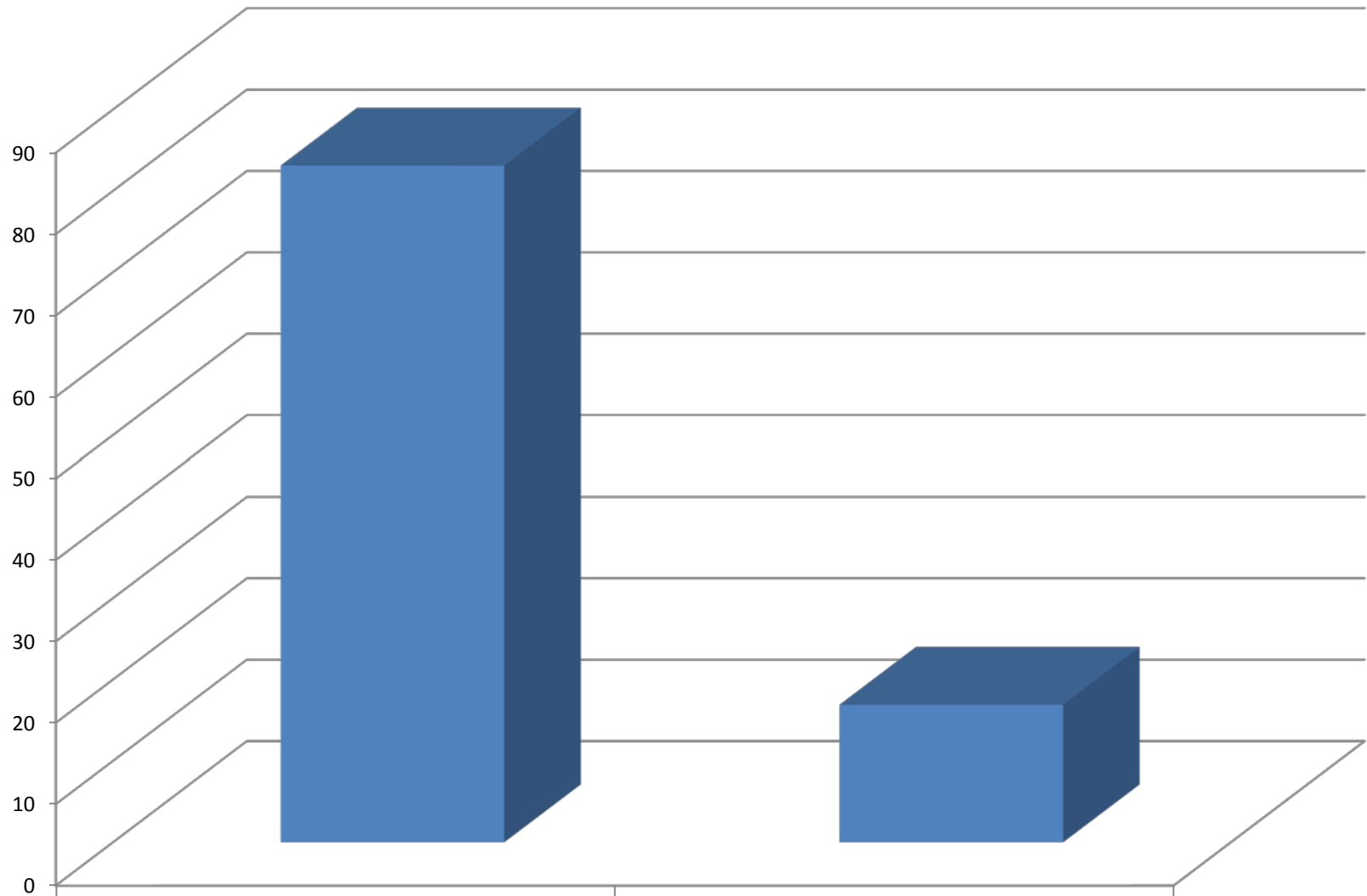
D2a. How satisfied are you with the availability of public information about crimes on campus?



D2b. How satisfied are you with the availability of information about crime prevention and safety on campus?



D3. If you observed someone on campus behaving suspiciously or in a threatening manner, would you know how to report it?



UNCP (N=59)

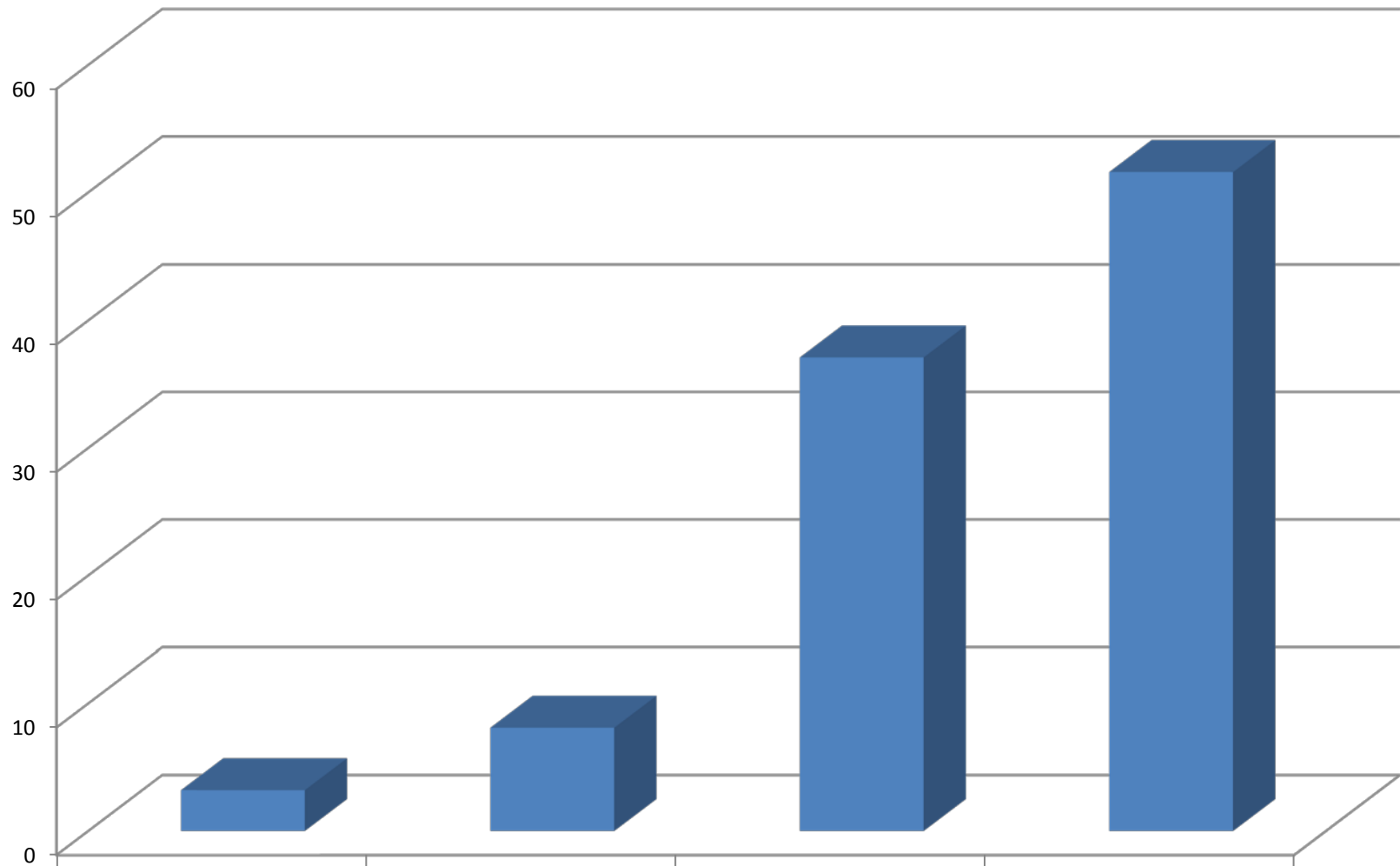
Yes

83.1

No

16.9

D4. If you observed someone on campus behaving suspiciously or in a threatening manner, how Likely would you be to report it to a campus authority?



UNCP (N=62)

Very Likely

3.2

Somewhat Likely

8.1

Somewhat Unlikely

37.1

Very Unlikely

51.6