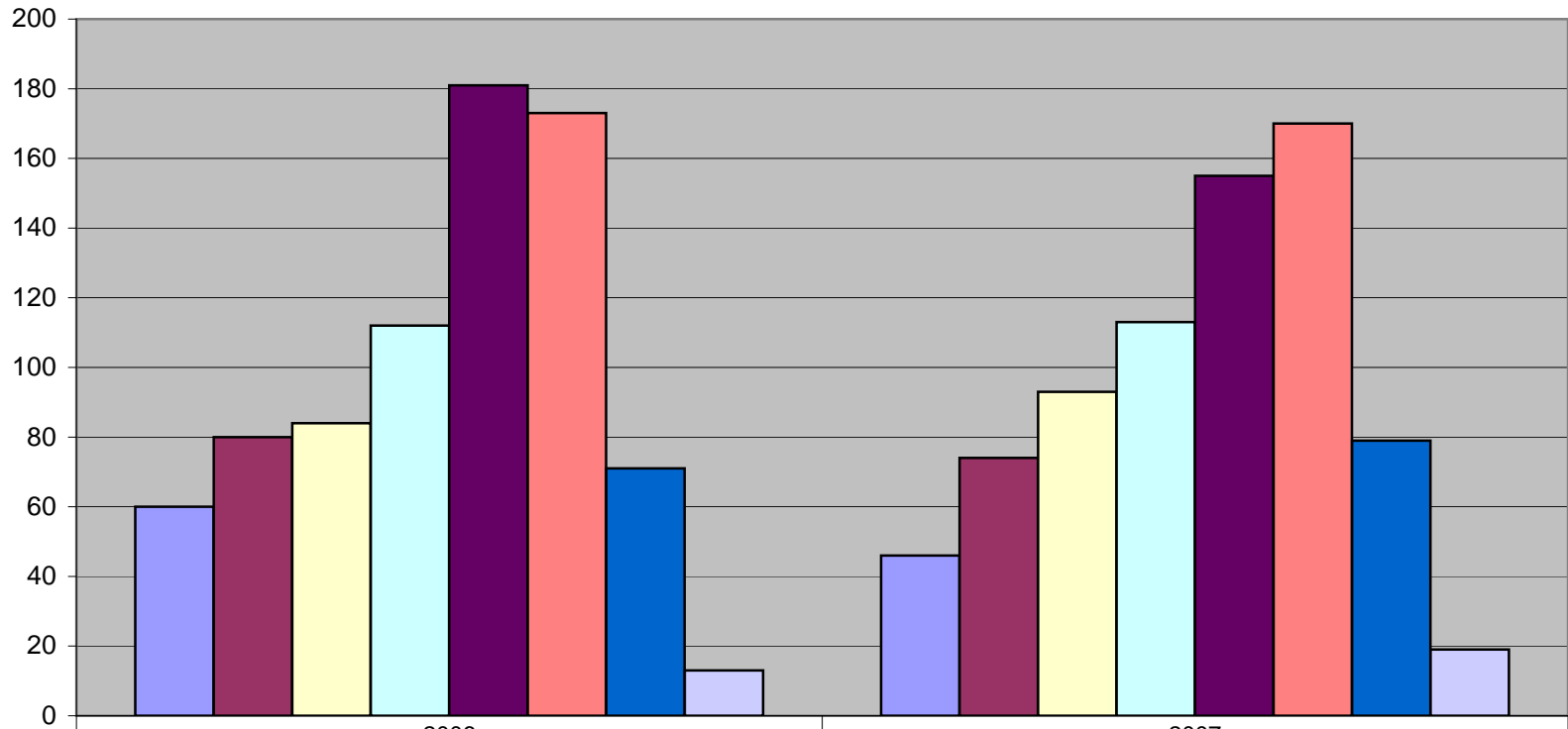
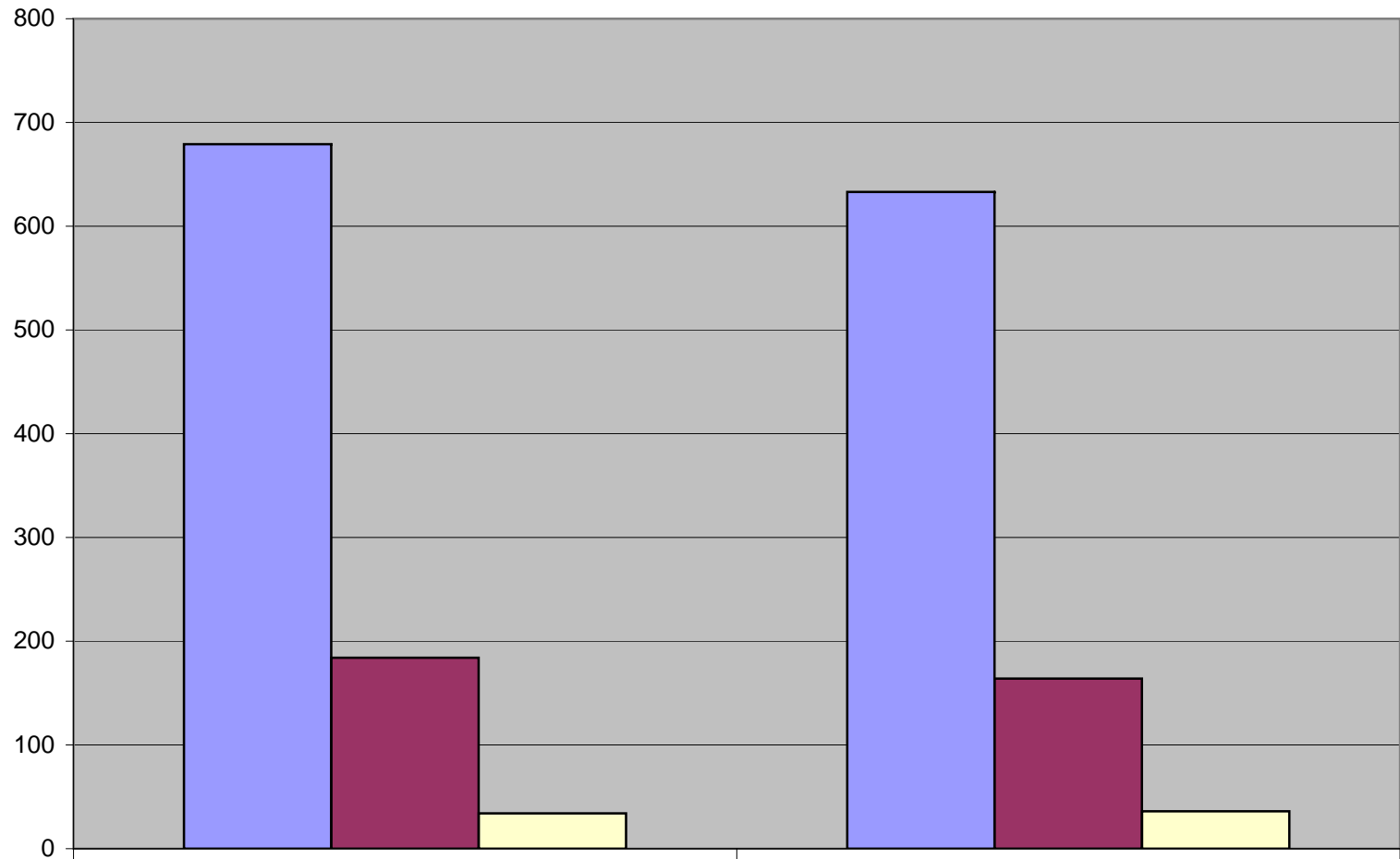


Amount of Parental Pre-Tax Income



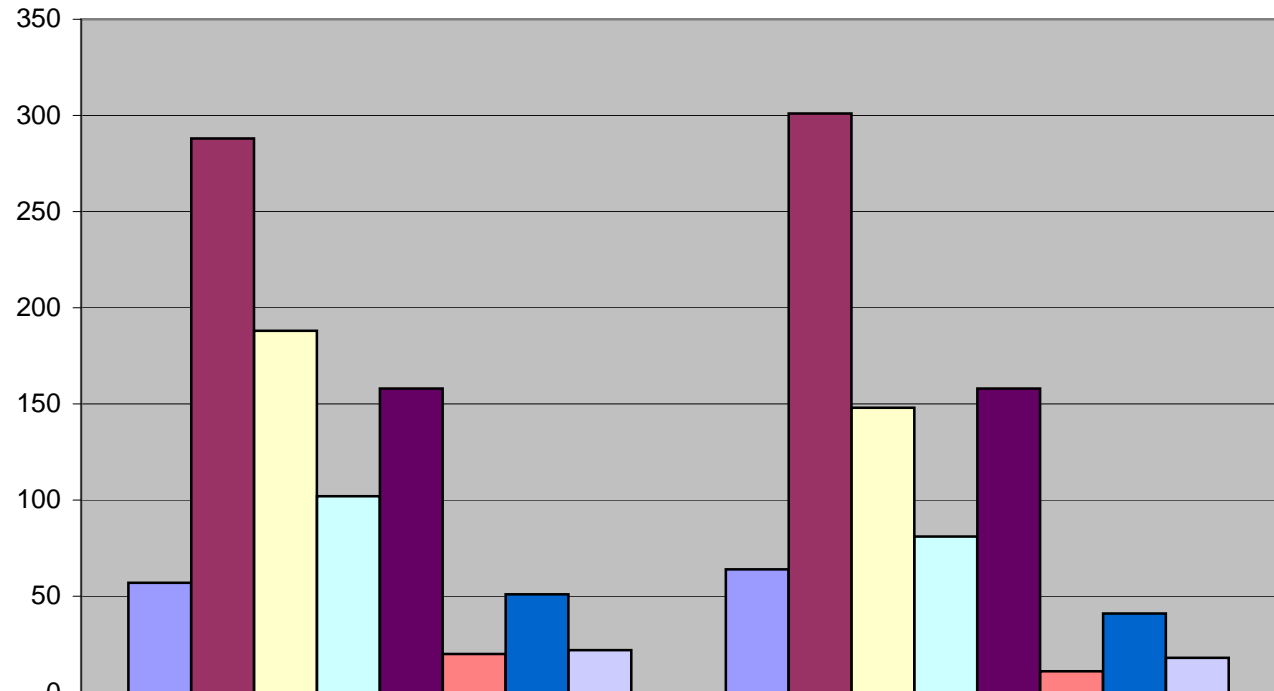
	2006	2007
■ \$10,000 or less	60	46
■ \$10,001-\$20,000	80	74
■ \$20,001-\$30,000	84	93
■ \$30,001-\$40,000	112	113
■ \$40,001-\$60,000	181	155
■ \$60,001-\$100,000	173	170
■ \$100,001-\$200,000	71	79
■ More than \$200,000	13	19

Dependents Currently Enrolled in College



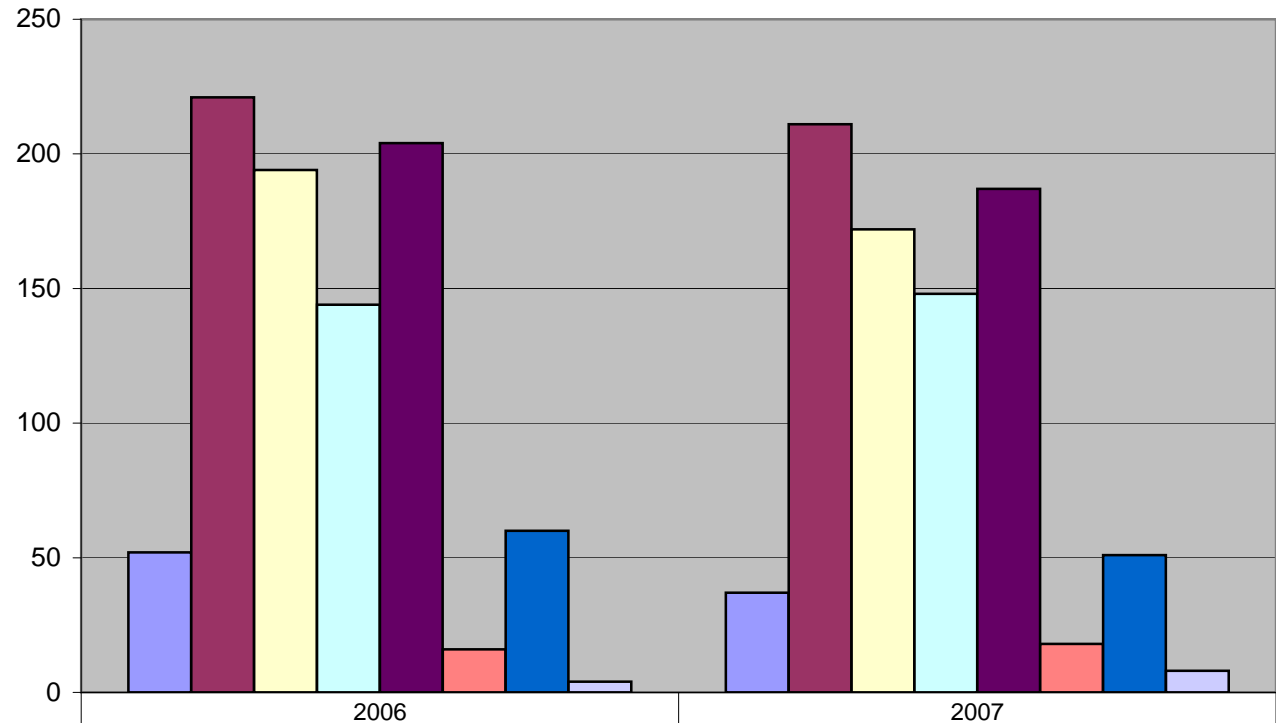
	2006	2007
■ Only myself	679	633
■ Two dependents	184	164
■ Three or more dependents	34	36

Educational Attainment of Father



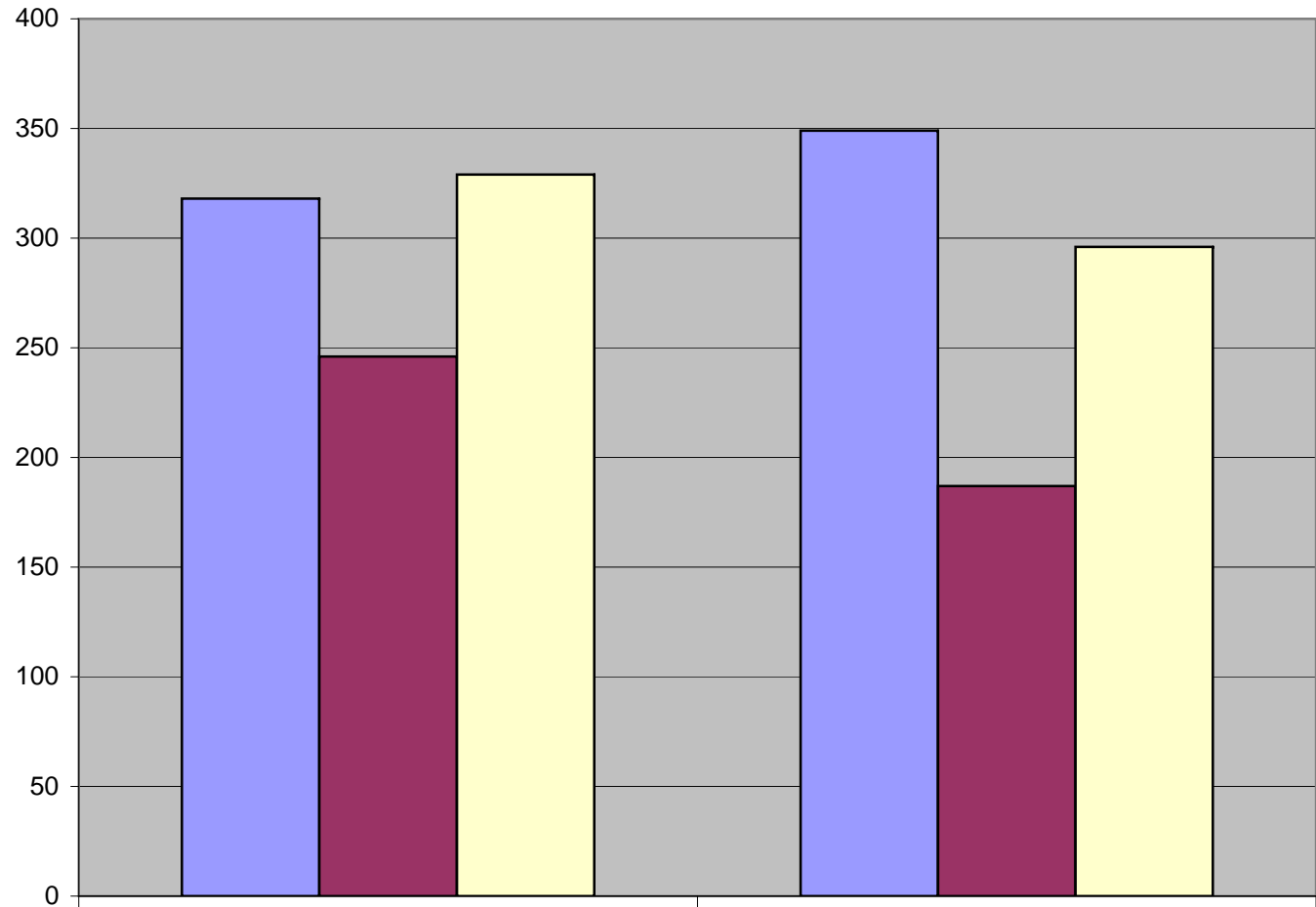
	2006	2007
Less than High School graduate	57	64
High School graduate	288	301
Some College/no degree	188	148
Two-year Associate Degree	102	81
Four-year Baccalaureate Degree	158	158
Some Graduate or First Professional coursework, but no degree	20	11
Master's Degree	51	41
Doctorate or First Professional Degree	22	18

Educational Attainment of Mother



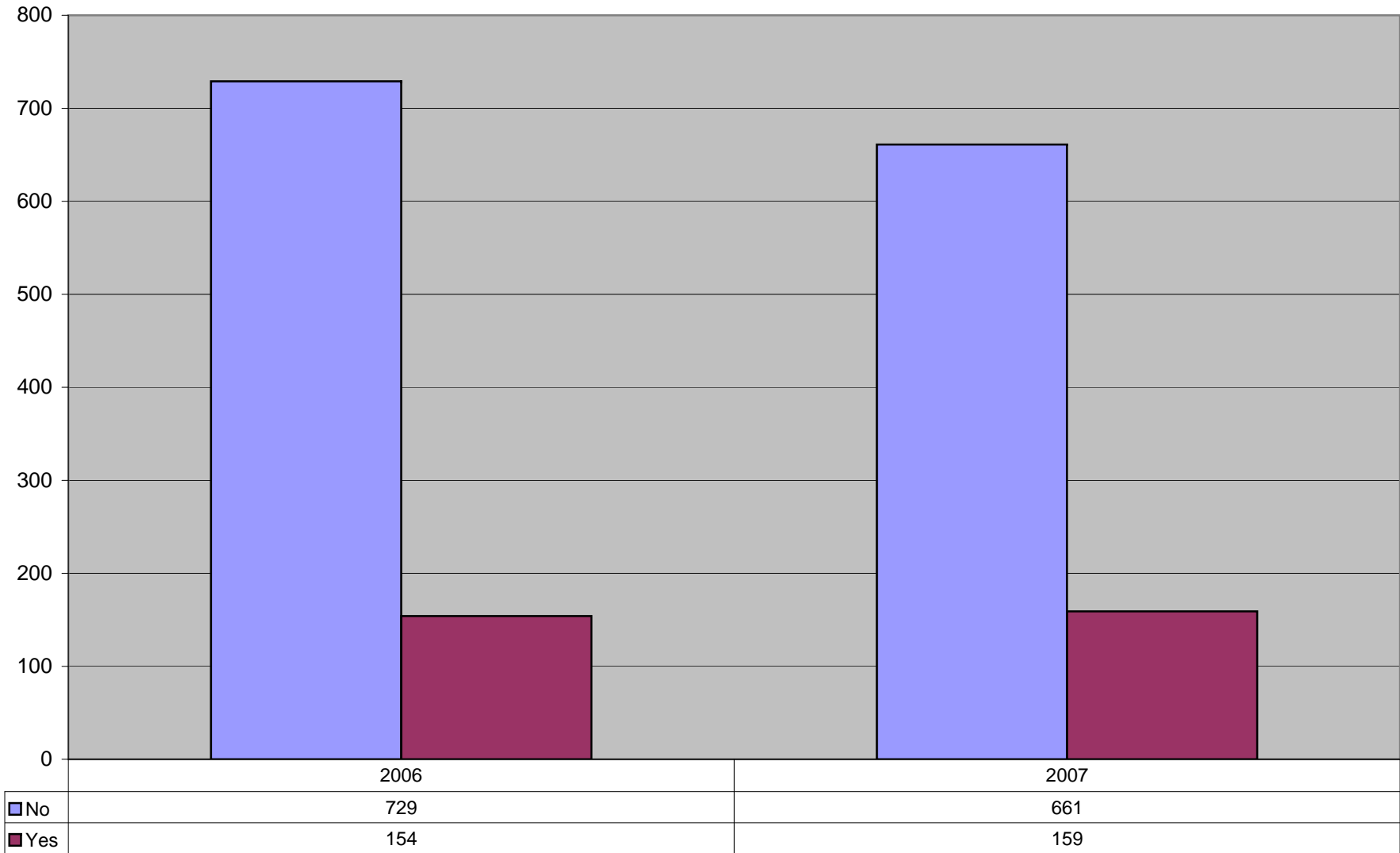
	2006	2007
Less than High School graduate	52	37
High School graduate	221	211
Some College/no degree	194	172
Two-year Associate Degree	144	148
Four-year Baccalaureate Degree	204	187
Some Graduate or First Professional coursework, but no degree	16	18
Master's Degree	60	51
Doctorate or First Professional Degree	4	8

Employment Plans During First Semester

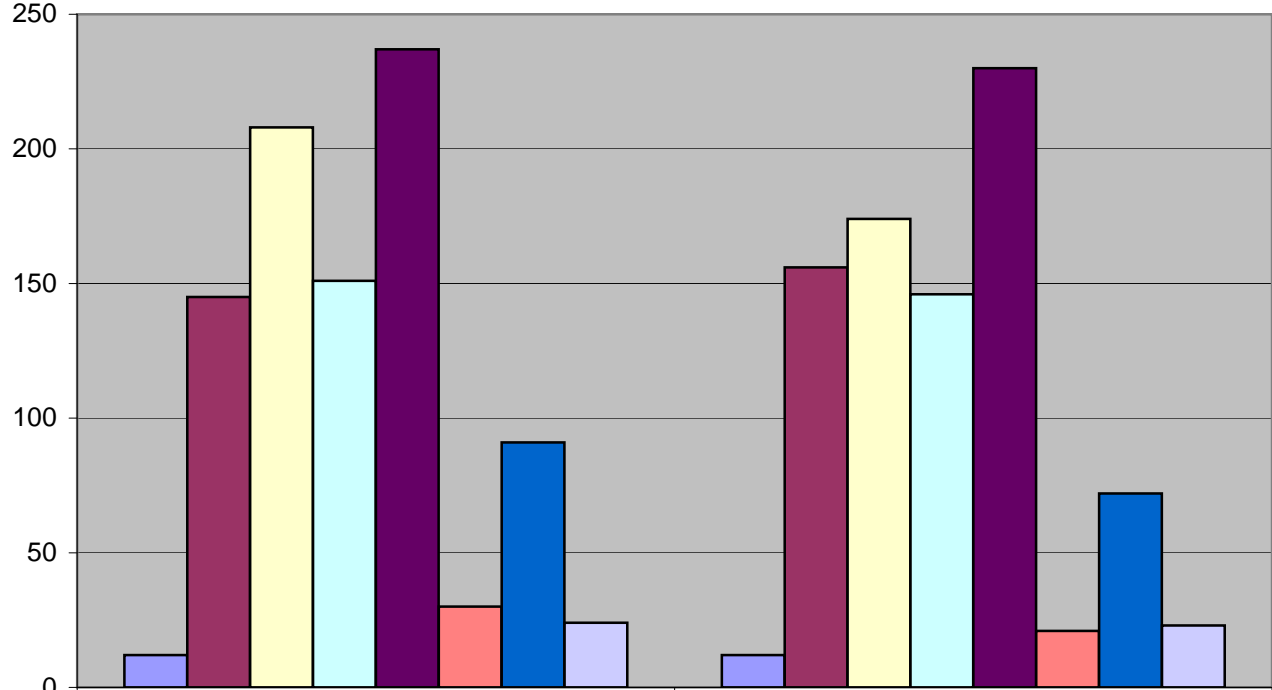


	2006	2007
I do not plan to work	318	349
I plan to work 20 hours or more each week	246	187
I plan to work 20 hours or less each week	329	296

First Generation College Student?



Highest Educational Attainment of Parent/Guardian



	2006	2007
Less than High School graduate	12	12
High School graduate	145	156
Some College/no degree	208	174
Two-year Associate Degree	151	146
Four-year Baccalaureate Degree	237	230
Some Graduate or First Professional coursework, but no degree	30	21
Master's Degree	91	72
Doctorate or First Professional Degree	24	23