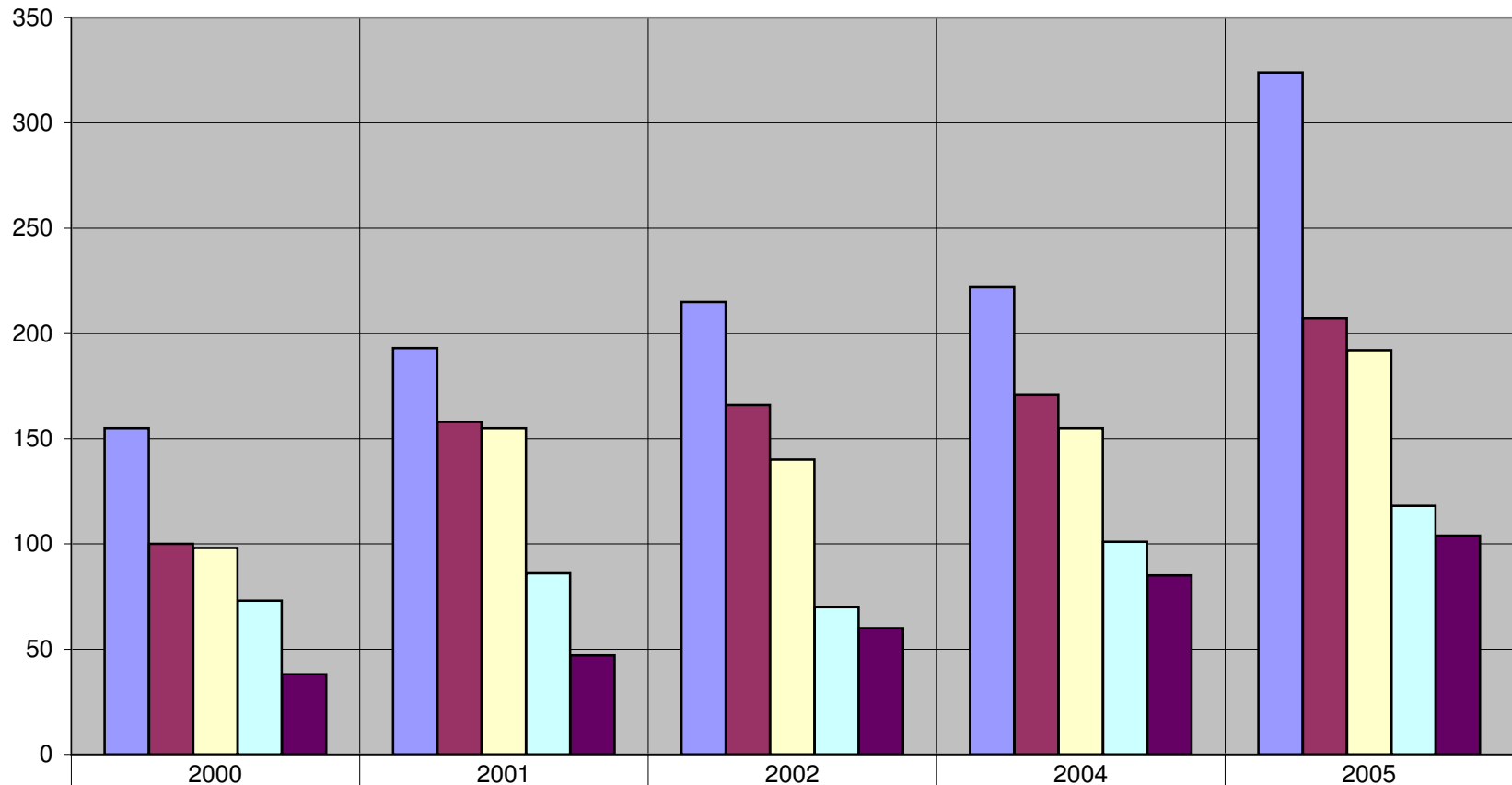
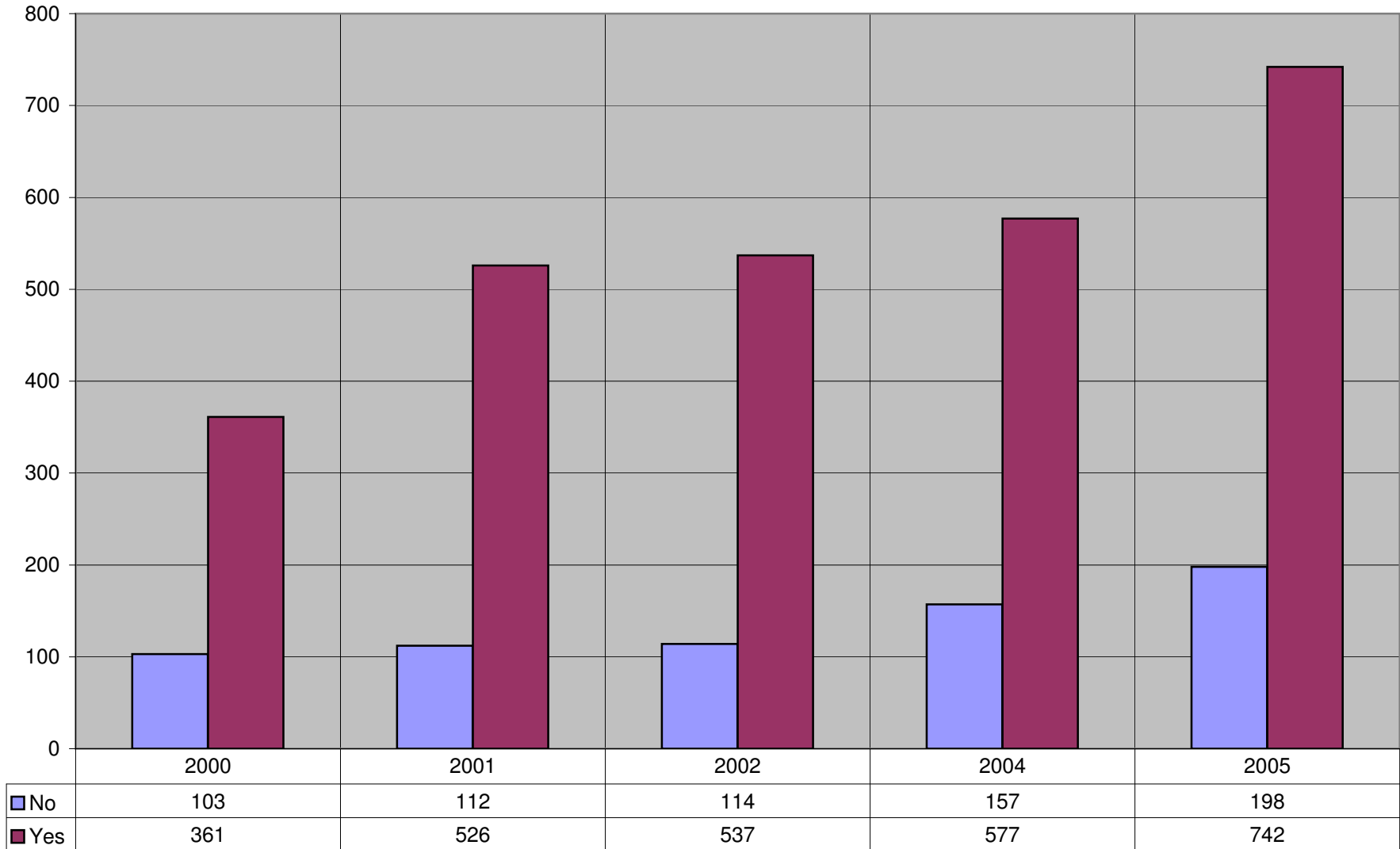


1. To How Many Colleges Did You Apply?

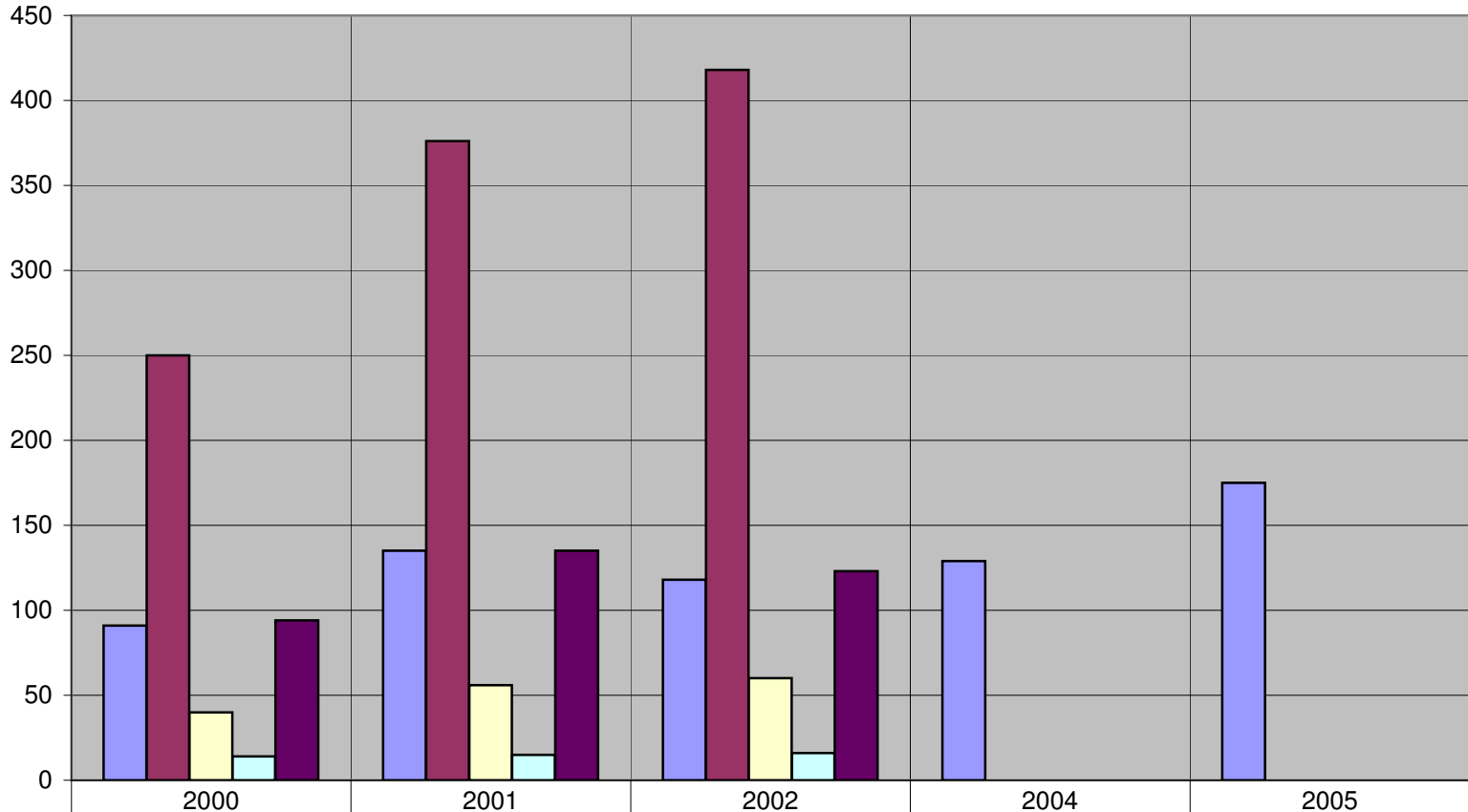


■ One	155	193	215	222	324
■ Two	100	158	166	171	207
■ Three	98	155	140	155	192
■ Four	73	86	70	101	118
■ Five or more	38	47	60	85	104

2a. Are You Receiving Any Type of Financial Aid?

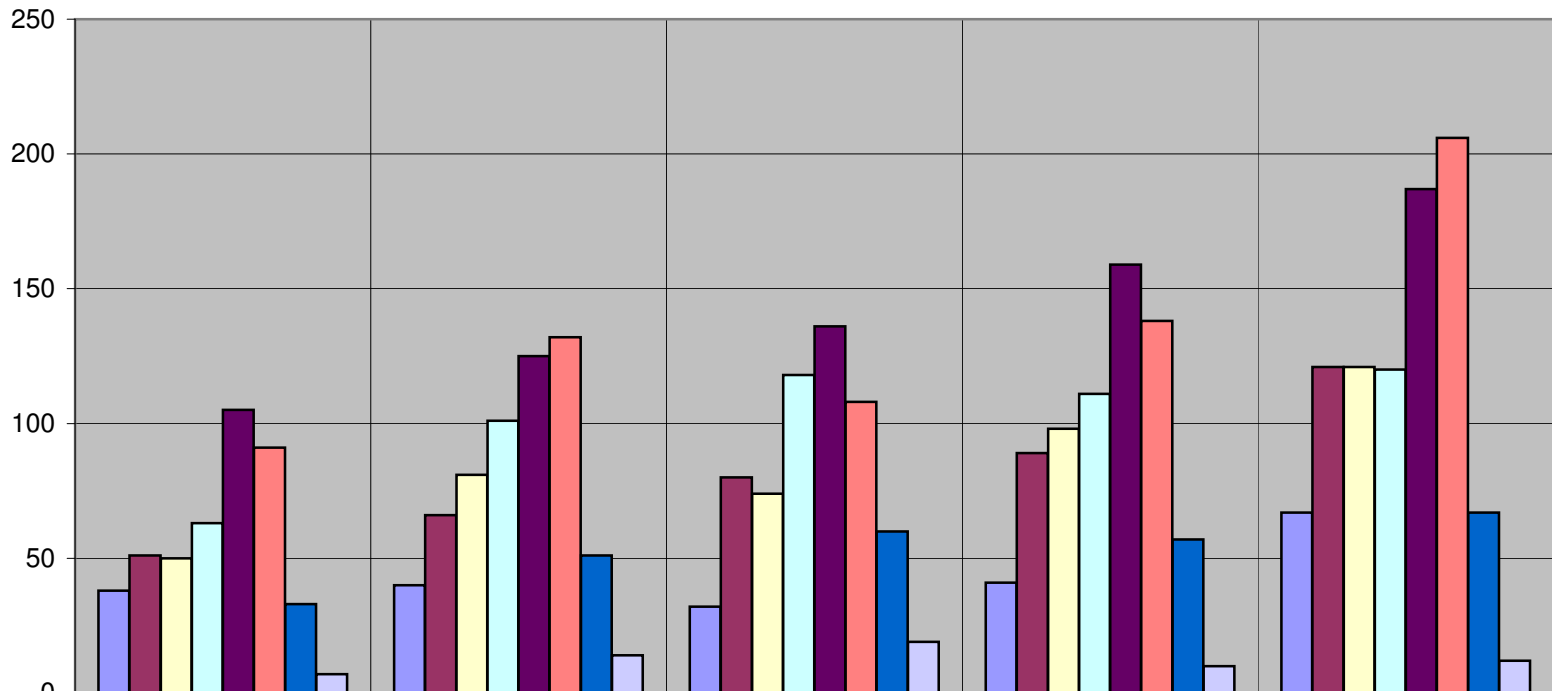


2b. Kind of Financial Aid Received



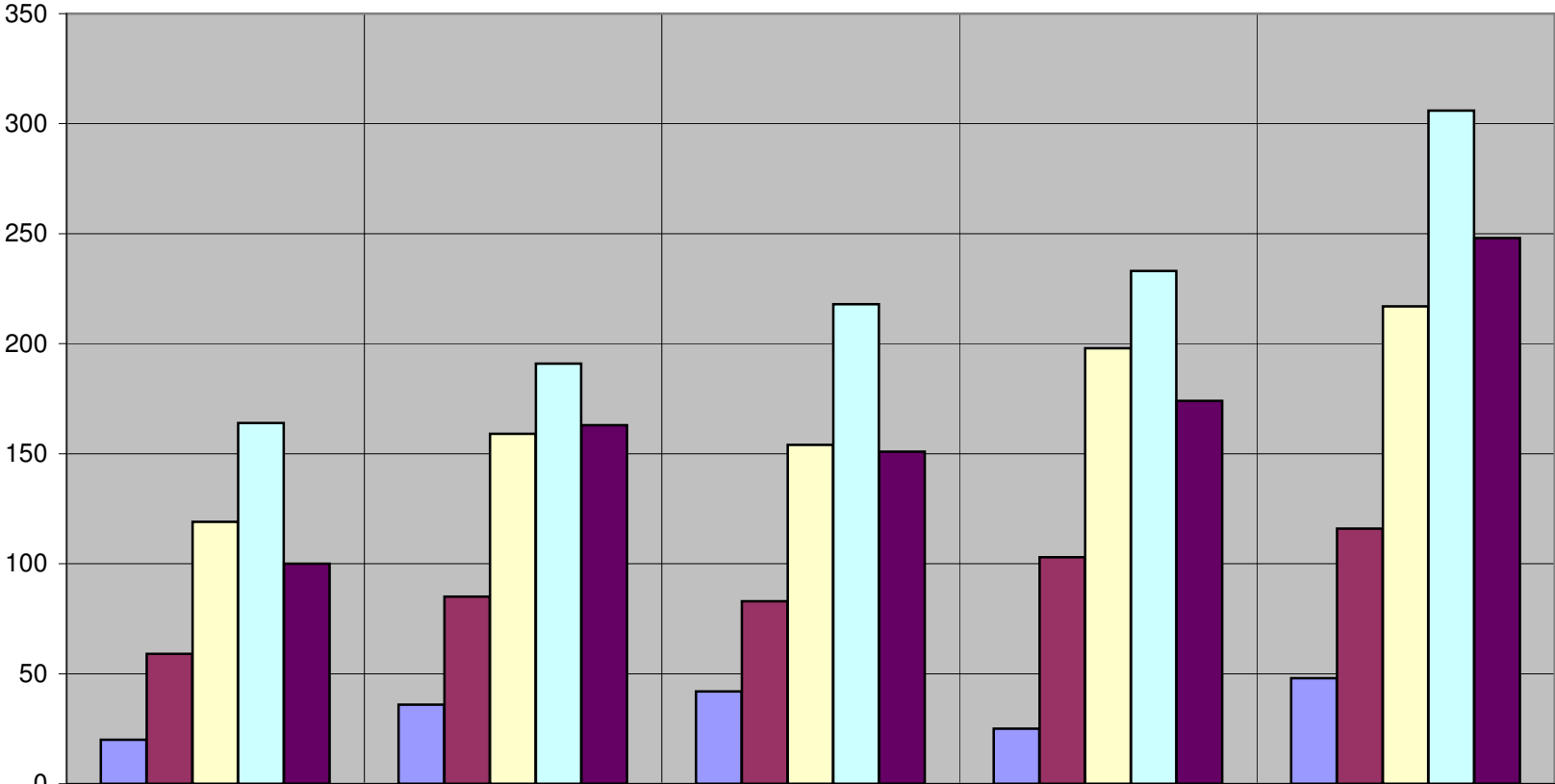
■ Academic	91	135	118	129	175
■ Financial Need	250	376	418	0	0
■ Athletic Based	40	56	60	0	0
■ Other (Dance, Music)	14	15	16	0	0
■ Other than Listed	94	135	123	0	0

3. Amount of Parent Pre-Tax Income



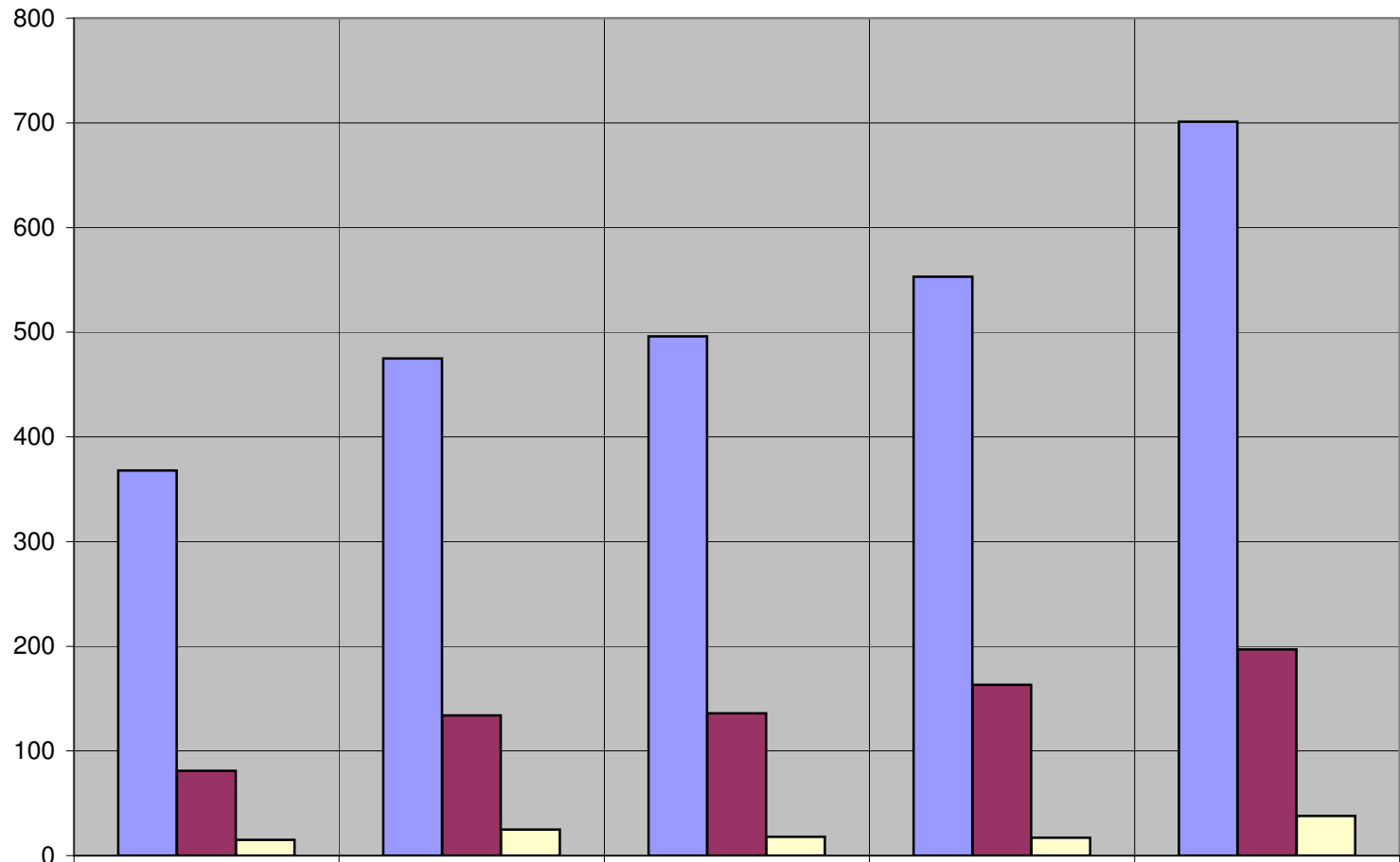
	2000	2001	2002	2004	2005
■ \$10,000 or less	38	40	32	41	67
■ \$10,001-\$20,000	51	66	80	89	121
■ \$20,001-\$30,000	50	81	74	98	121
■ \$30,001-\$40,000	63	101	118	111	120
■ \$40,001-\$60,000	105	125	136	159	187
■ \$60,001-\$100,000	91	132	108	138	206
■ \$100,001-\$200,000	33	51	60	57	67
■ More than \$200,000	7	14	19	10	12

4a. People Currently Supported in Household



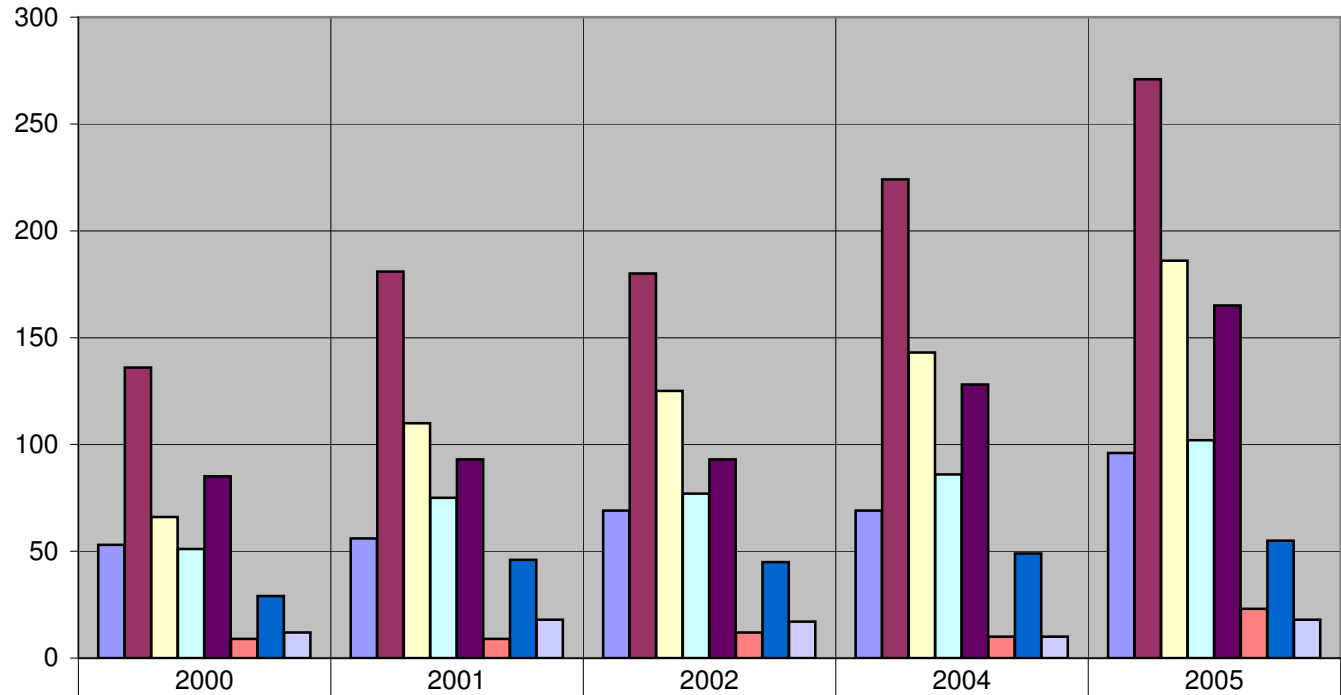
	2000	2001	2002	2004	2005
One	20	36	42	25	48
Two	59	85	83	103	116
Three or more	119	159	154	198	217
Four or more	164	191	218	233	306
Five or more	100	163	151	174	248

4b. Dependents Currently Enrolled in College



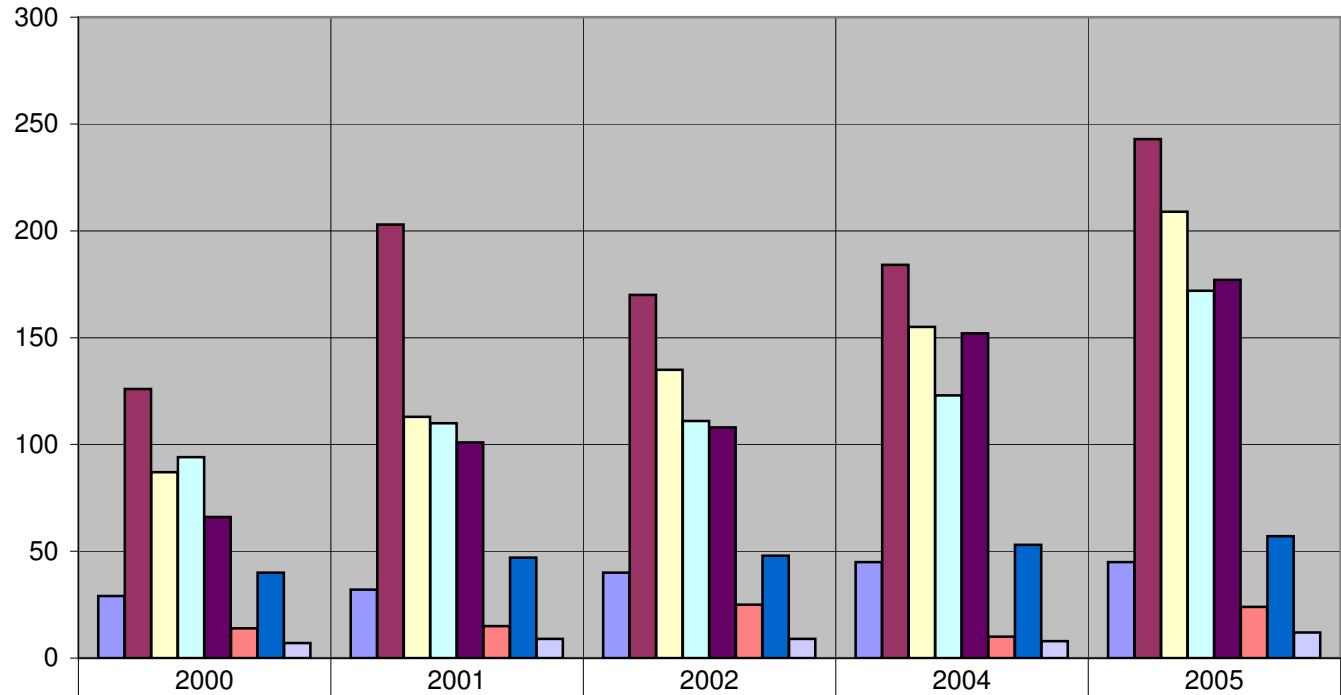
Only myself	368	475	496	553	701
Two dependents	81	134	136	163	197
Three or more dependents	15	25	18	17	38

5a. Educational Attainment of Father



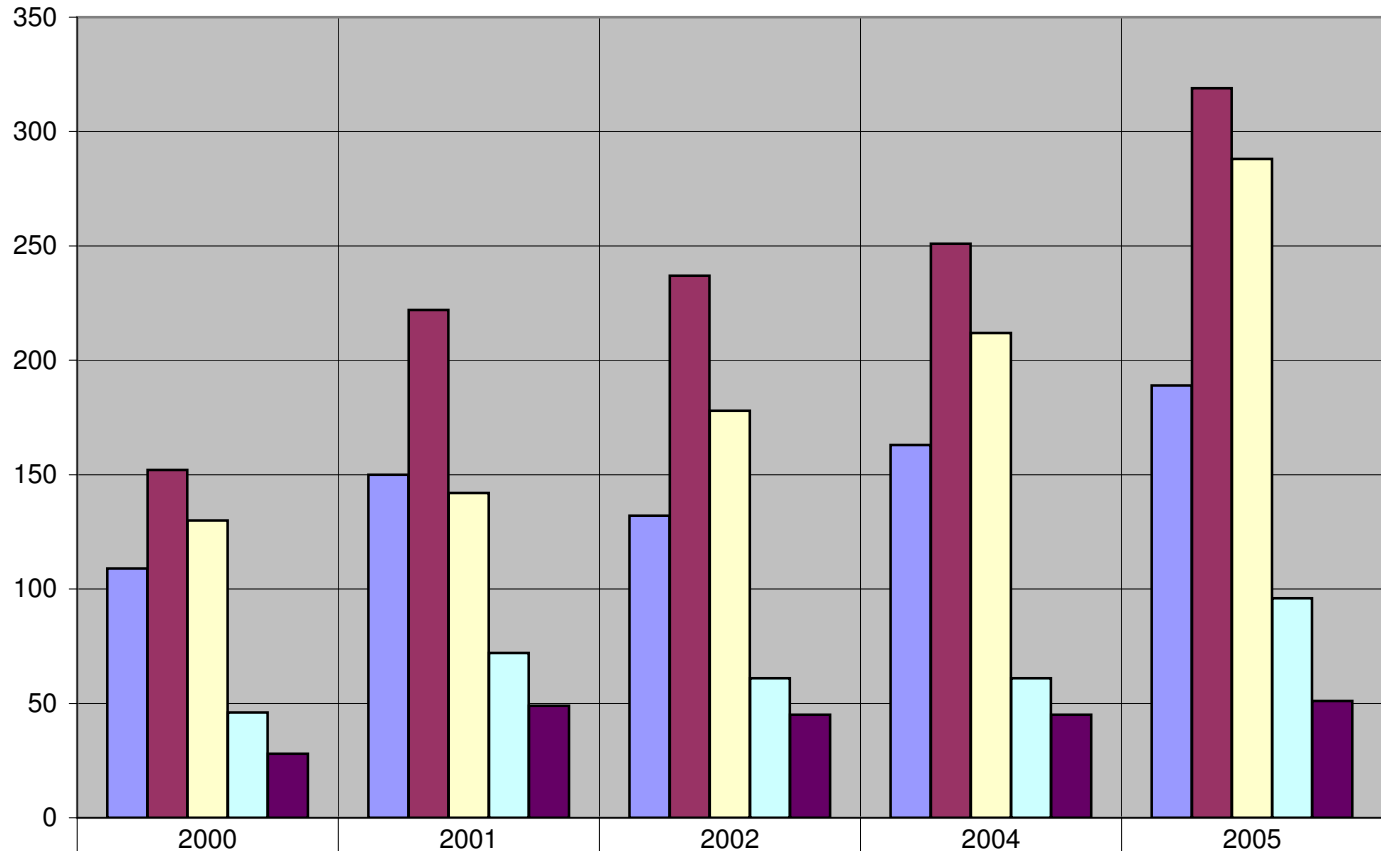
	2000	2001	2002	2004	2005
Less than High School graduate	53	56	69	69	96
High School graduate	136	181	180	224	271
Some College/no degree	66	110	125	143	186
Two-year Associate Degree	51	75	77	86	102
Four-year Baccalaureate Degree	85	93	93	128	165
Some Graduate or First Professional coursework, but no degree	9	9	12	10	23
Master's Degree	29	46	45	49	55
Doctorate or First Professional Degree	12	18	17	10	18

5b. Educational Attainment of Mother



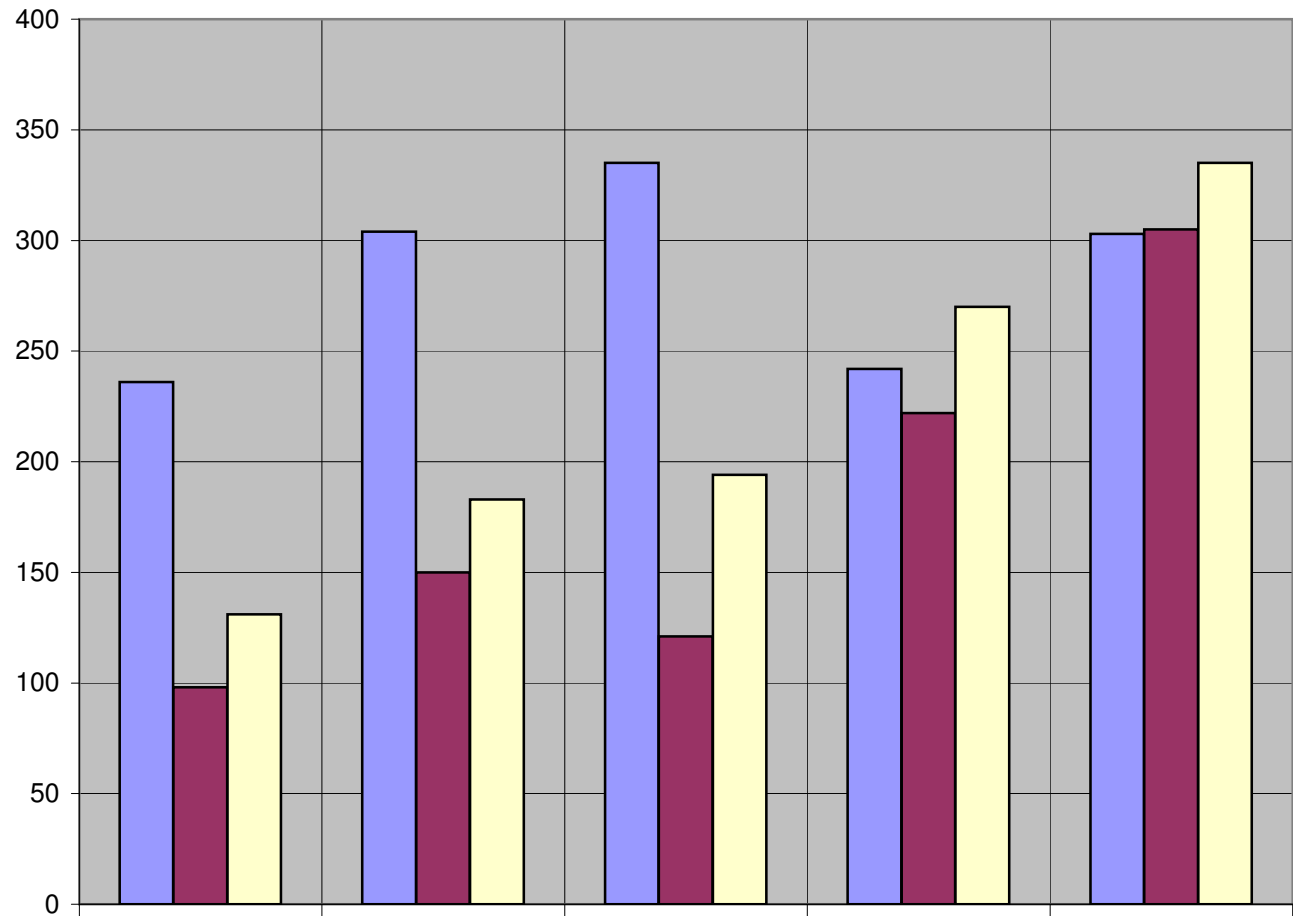
	2000	2001	2002	2004	2005
Less than High School graduate	29	32	40	45	45
High School graduate	126	203	170	184	243
Some College/no degree	87	113	135	155	209
Two-year Associate Degree	94	110	111	123	172
Four-year Baccalaureate Degree	66	101	108	152	177
Some Graduate or First Professional coursework, but no degree	14	15	25	10	24
Master's Degree	40	47	48	53	57
Doctorate or First Professional Degree	7	9	9	8	12

6. Area in Which You Lived During High School



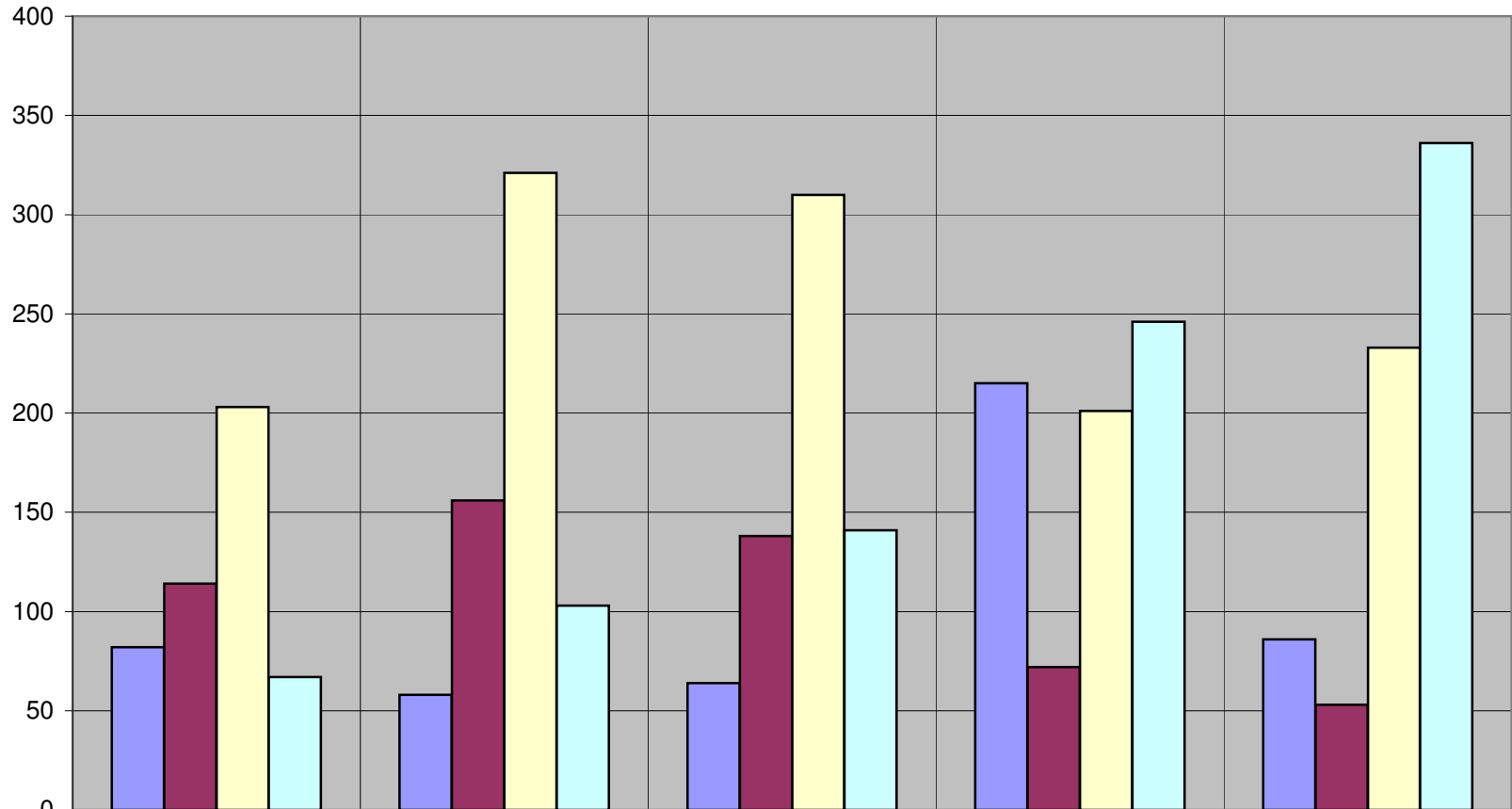
■ Rural Area	109	150	132	163	189
■ Small town (20,000 or fewer)	152	222	237	251	319
■ Moderate-size city (20,001-60,000)	130	142	178	212	288
■ Large city (60,001-100,000)	46	72	61	61	96
■ Urban area (more than 100,000)	28	49	45	45	51

7. Employment Plans During First Semester



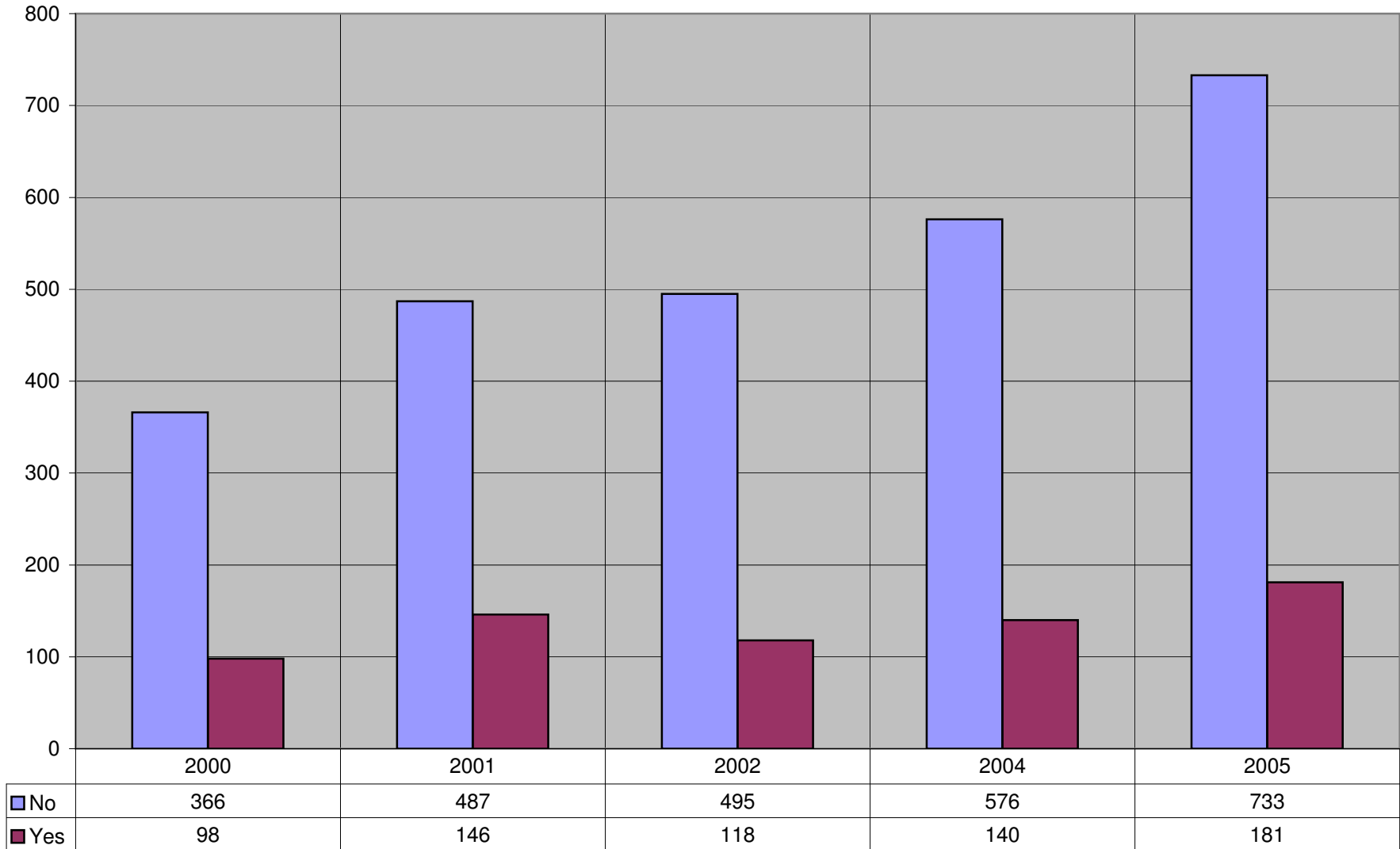
	2000	2001	2002	2004	2005
■ I do not plan to work	236	304	335	242	303
■ I plan to work 20 hours or more each week	98	150	121	222	305
■ I plan to work 20 hours or less each week	131	183	194	270	335

8a. Do You Have a Personal Computer?

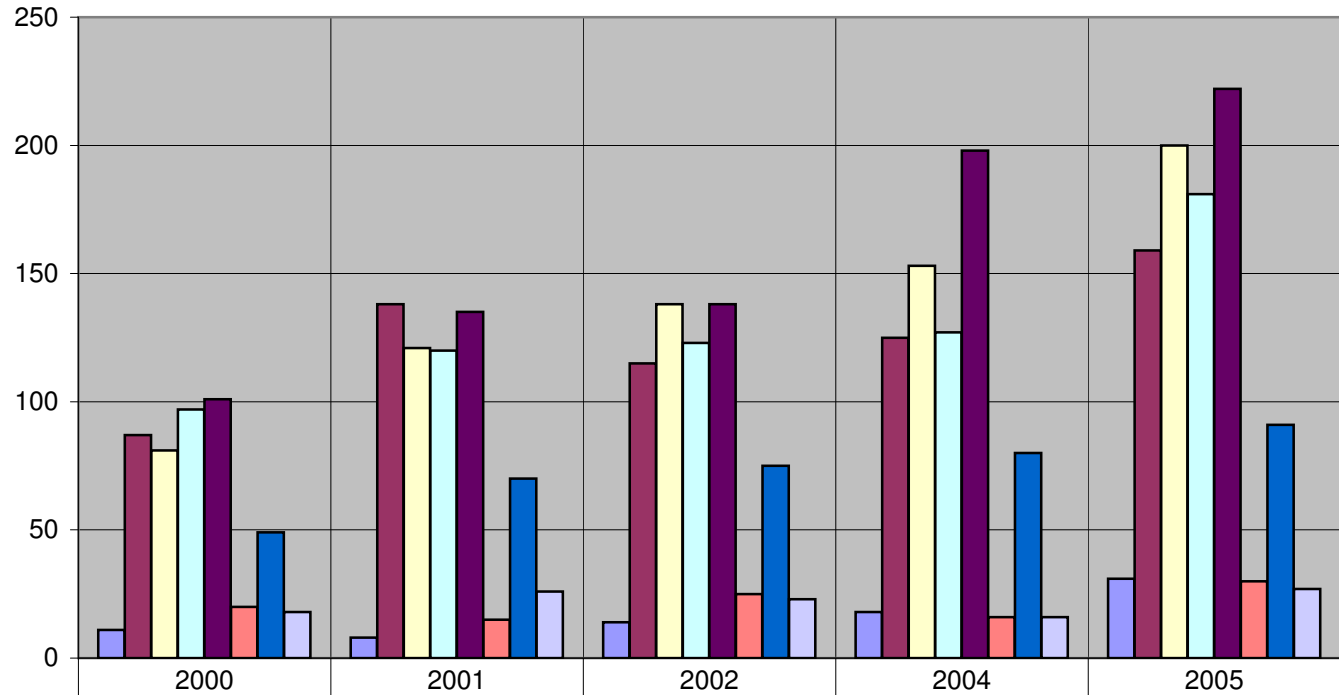


	2000	2001	2002	2004	2005
Don't know yet?	82	58	64	215	86
No	114	156	138	72	53
Yes, a desktop	203	321	310	201	233
Yes, a laptop	67	103	141	246	336

9. First Generation College Student?



10. Highest Educational Attainment of Parent/Guardian



■ Less than High School graduate	11	8	14	18	31
■ High School graduate	87	138	115	125	159
■ Some College/no degree	81	121	138	153	200
■ Two-year Associate Degree	97	120	123	127	181
■ Four-year Baccalaureate Degree	101	135	138	198	222
■ Some Graduate or First Professional coursework, but no degree	20	15	25	16	30
■ Master's Degree	49	70	75	80	91
■ Doctorate or First Professional Degree	18	26	23	16	27