

# BUILDING EVACUATION MAPS UNC PEMBROKE



**ENVIRONMENTAL HEALTH  
AND SAFETY**

UNIVERSITY OF NORTH CAROLINA PEMBROKE

[safety@uncp.edu](mailto:safety@uncp.edu)  
910.521.6792

## BUILDING EVACUATION PLAN

1. If you smell smoke or other unusual odors suggesting a possible fire or conditions favorable for fire, immediately evacuate, call 911 and UNC Pembroke's Police and Public Safety Office (910.521.6235) once safety outside.
2. Upon discovering a fire, immediately pull building fire alarm pull station to sound the alarm.
3. Upon activation of building fire alarm, building occupants should evacuate using the nearest safe exit route. **DO NOT USE ELEVATOR.**
4. Mobility impaired individuals on upper floors should proceed to the nearest "fire safe" stairwell for assistance by emergency response personnel. Contact UNC Pembroke's Police and Public Safety (910.521.6235) and provide location for rescue assistance.
5. Building occupants should evacuate to the designated assembly location at least 150 feet from the building and report their location to their supervisor.
6. Each building evacuee shall not re-enter the building until authorized personnel (i.e. police, fire department, supervisor, etc.) indicate it is safe to re-enter.
7. Each building designated assembly location can be reviewed by clicking the building name above.

## AUXILIARY SERVICES BUILDING (270 FACULTY ROW)

### EVACUATION ASSEMBLY POINT

- LOT 14 WALKWAY (BEHIND UNIVERSITY POLICE)
- QUAD AREA (BETWEEN JONES PE BUILDING AND THE CHAVIS UNIVERSITY CENTER)



**BRAVES HEALTH CENTER (113 HAWK DRIVE)**  
EVACUATION ASSEMBLY POINT

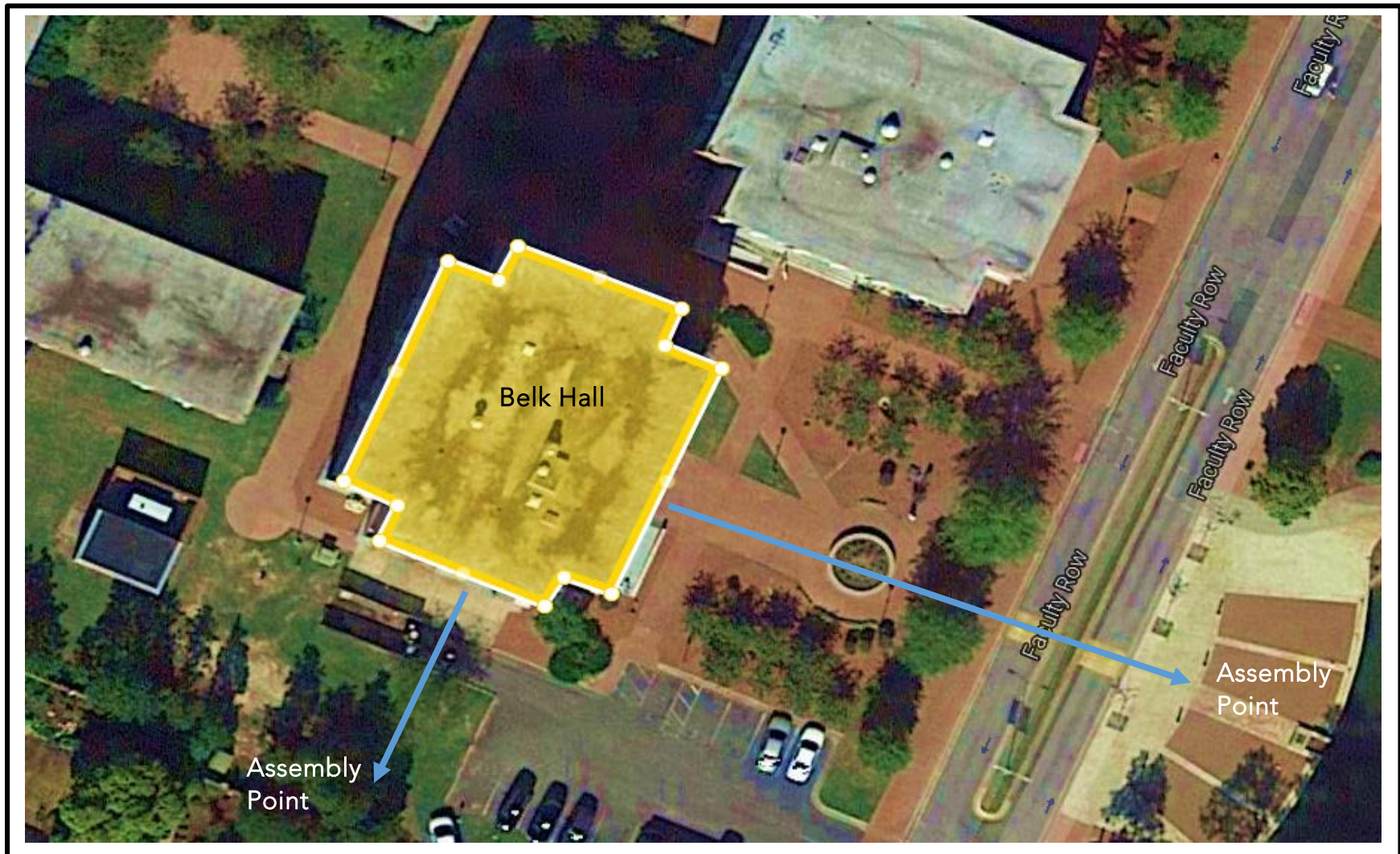
- AREA IN FRONT OF BUILDING
- AREA BETWEEN BRAVES HEALTH CENTER AND HEALTH SCIENCES BUILDING



## BELK HALL (81 FACULTY ROW)

### EVACUATION ASSEMBLY POINT

- BEHIND FORMER STUDENT HEALTH SERVICES BUILDING
- QUAD AREA ACROSS FACULTY ROW BESIDE WATER FEATURE



## BUSINESS ADMINISTRATION (185 FACULTY ROW)

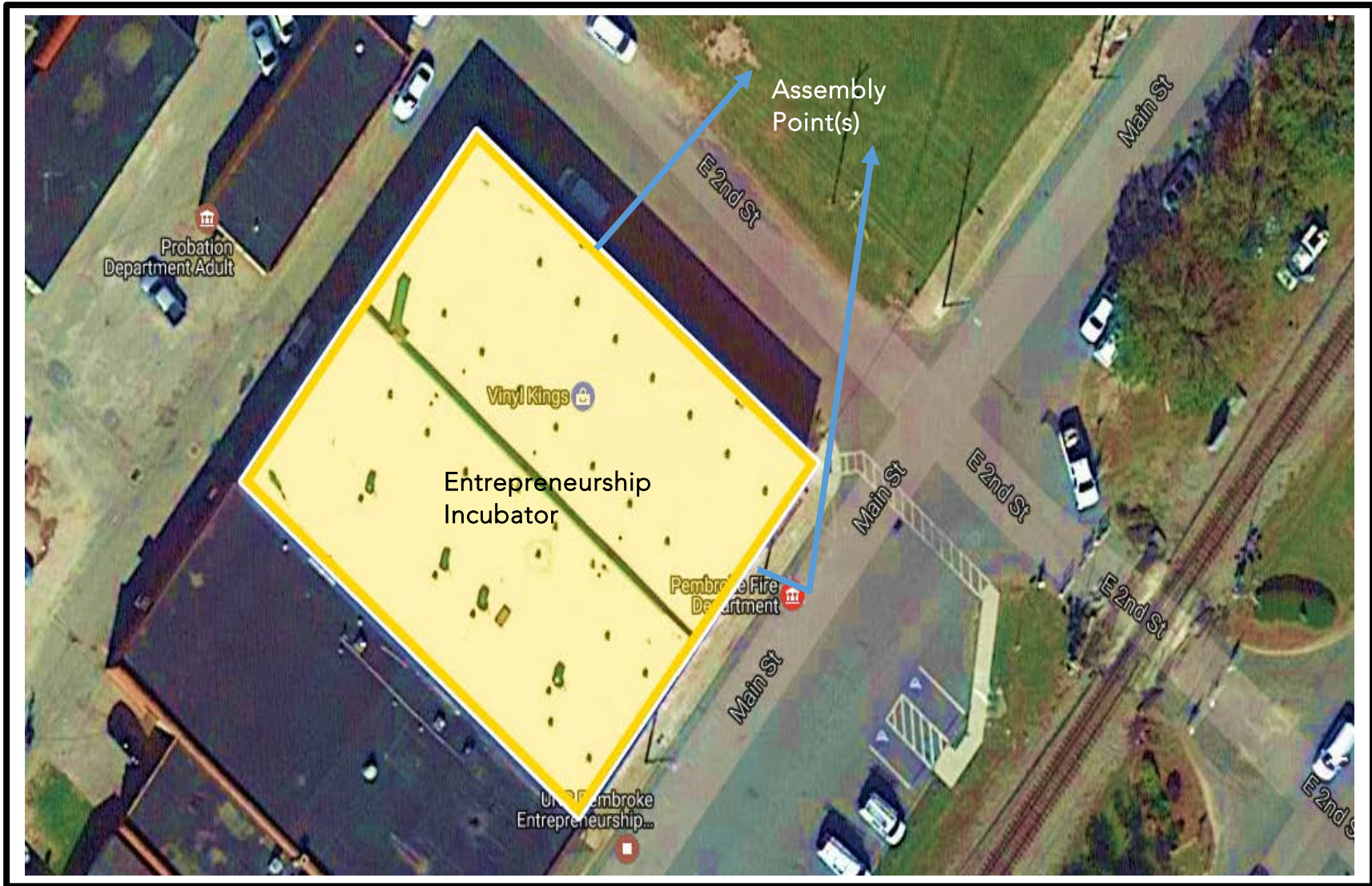
### EVACUATION ASSEMBLY POINT

- QUAD (BETWEEN PINE HALL AND EDUCATION CENTER)
- QUAD AREA (BETWEEN JONES PE AND UNIVERSITY CENTER)



**ENTREPRENEURSHIP INCUBATOR (202 MAIN STREET)  
EVACUATION ASSEMBLY POINT**

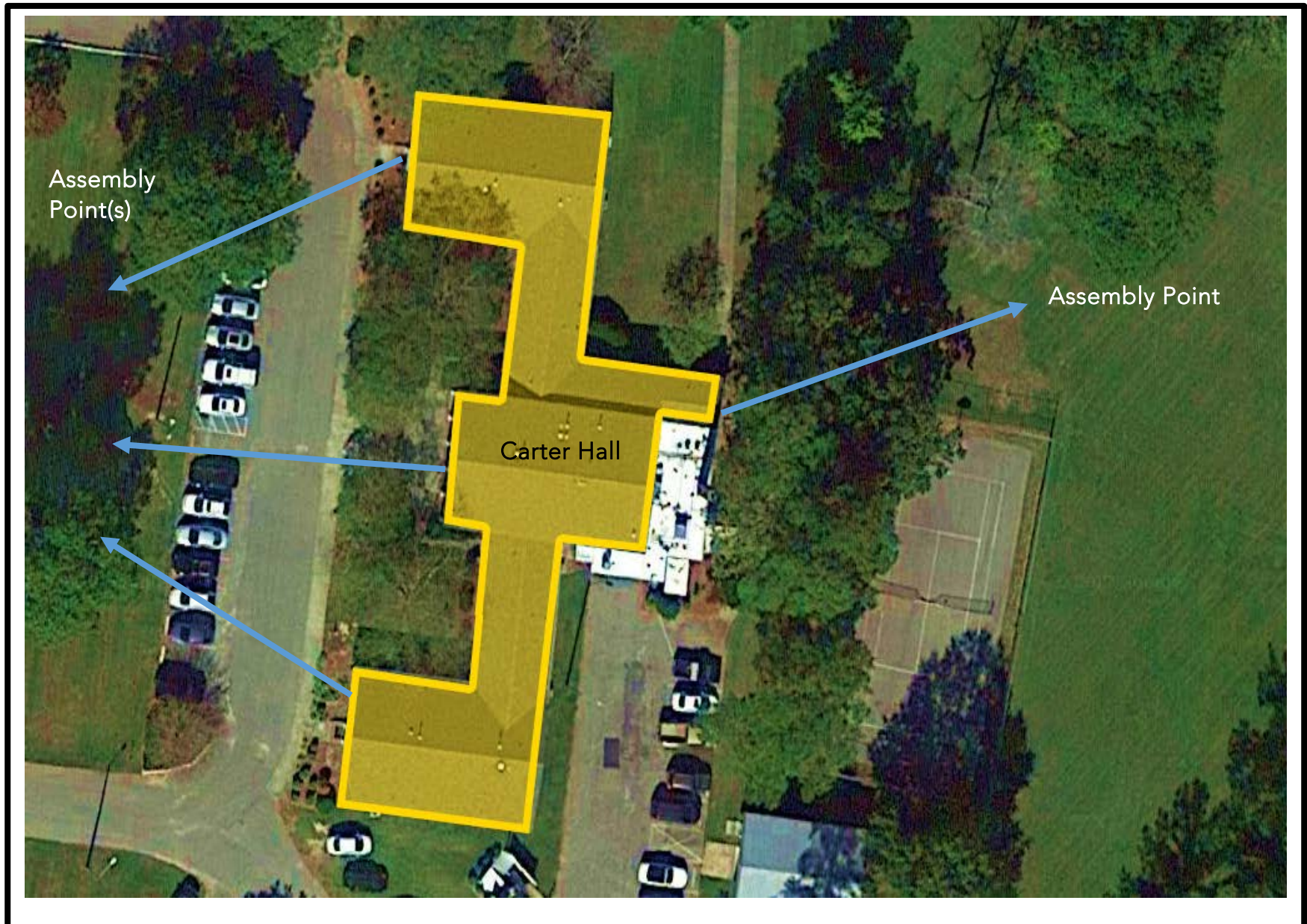
- QUAD (AREA ACROSS EAST 2<sup>ND</sup> STREET)



**CARTER HALL (200-B NORTH ODUM STREET)**

EVACUATION ASSEMBLY POINT

- QUAD (ACROSS FROM MAIN ENTRANCE TO CAMPUS)
- AREA BEHIND CARTER HALL





**CATON FIELD HOUSE (316 UNIVERSITY ROAD)**  
EVACUATION ASSEMBLY POINT

- FOOTBALL FIELD END ZONE
- AREA BETWEEN SIDEWALK AND PARKING LOT



**CHANCELLORS RESIDENCE (1223 OLD MAIN ROAD)**  
EVACUATION ASSEMBLY POINT

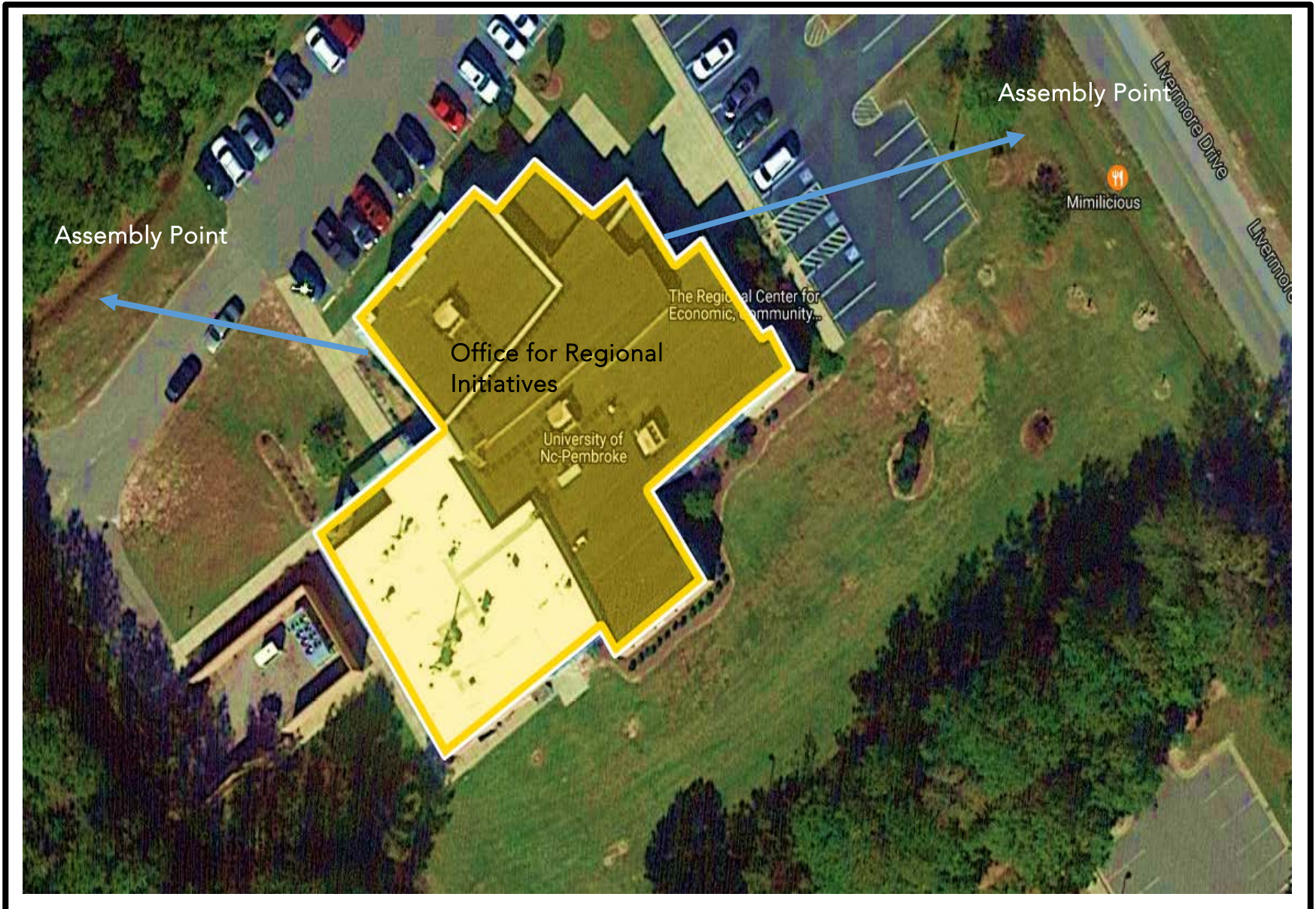
- AREA BEHIND SHED
- QUAD AREA IN FRONT OF RESIDENCE



## OFFICE FOR REGIONAL INITIATIVES (COMTEC 115 LIVERMORE DRIVE)

### EVACUATION ASSEMBLY POINT

- QUAD AREA (ACROSS FROM PARKING LOT)
- QUAD AREA (BEHIND REGIONAL INITIATIVES)



**COURTYARD APARTMENTS (519 A-B UNIVERSITY ROAD)**  
EVACUATION ASSEMBLY POINT

- QUAD (AREA BEHIND BUILDING)
- QUAD NEAR BASKETBALL COURT
- LOT 31 (AWAY FROM BUILDING)



## COURTYARD APARTMENTS (519 C-D UNIVERSITY ROAD)

### EVACUATION ASSEMBLY POINT

- QUAD (AREA BEHIND BUILDING)
- QUAD NEAR BASKETBALL COURT
- LOT 31 (AWAY FROM BUILDING)



**COURTYARD APARTMENTS (519 E UNIVERSITY ROAD)**  
EVACUATION ASSEMBLY POINT

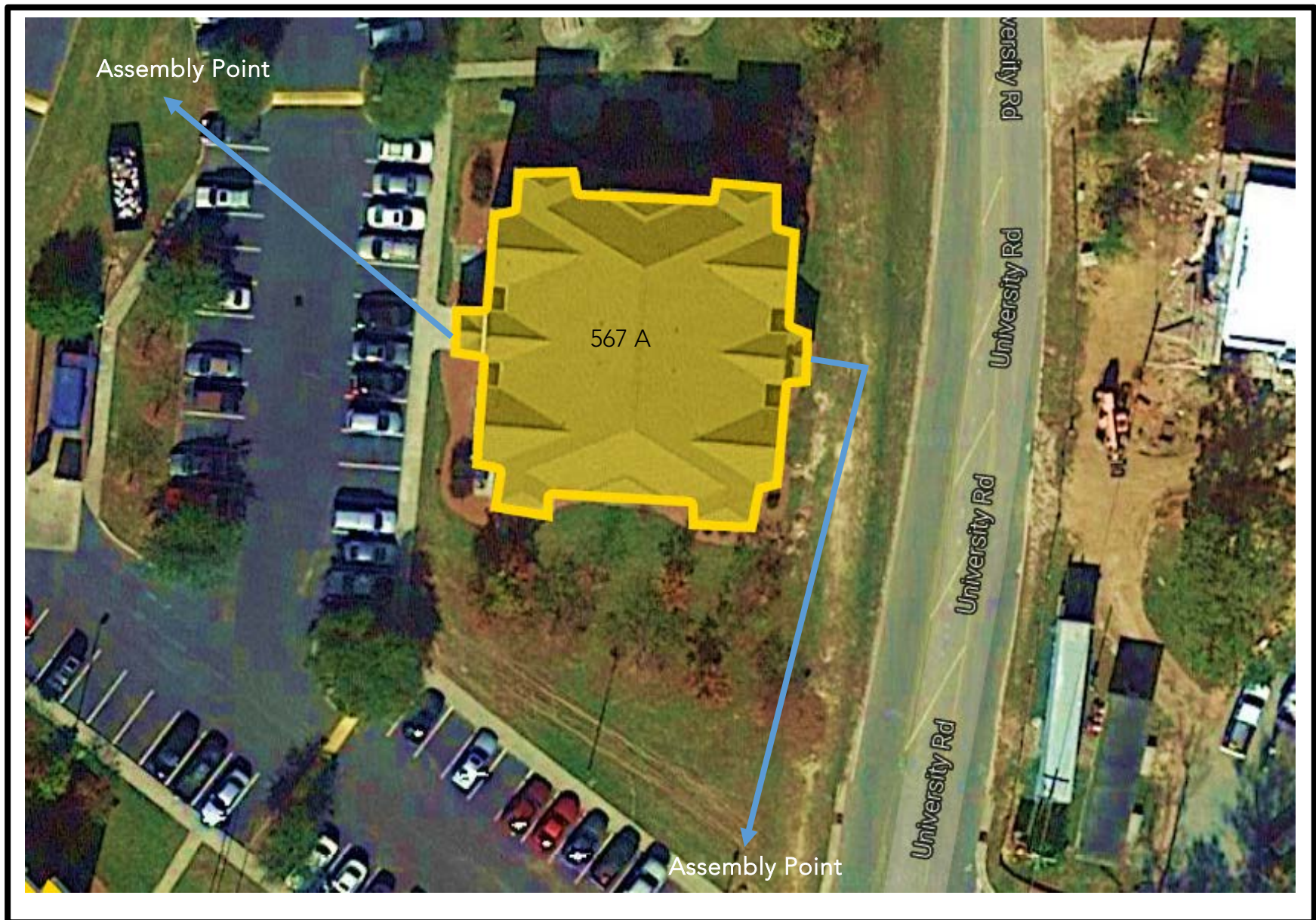
- ACROSS PARKING LOT (QUAD AREA OF BUILDING 567-A)
- QUAD NEAR BASKETBALL COURT



## COURTYARD APARTMENTS (567 A UNIVERSITY ROAD)

### EVACUATION ASSEMBLY POINT

- ACROSS PARKING LOT
- QUAD BETWEEN UNIVERSITY ROAD AND PARKING LOT



**COURTYARD APARTMENTS (567 B UNIVERSITY ROAD)**  
EVACUATION ASSEMBLY POINT

- QUAD AREA (ACROSS PARKING LOT)
- QUAD BETWEEN UNIVERSITY ROAD AND 567 A





## COURTYARD APARTMENTS (567 C UNIVERSITY ROAD)

### EVACUATION ASSEMBLY POINT

- QUAD AREA (ACROSS PARKING LOT)
- QUAD BETWEEN 567 C AND 567 B



## COURTYARD APARTMENTS (567 D UNIVERSITY ROAD)

### EVACUATION ASSEMBLY POINT

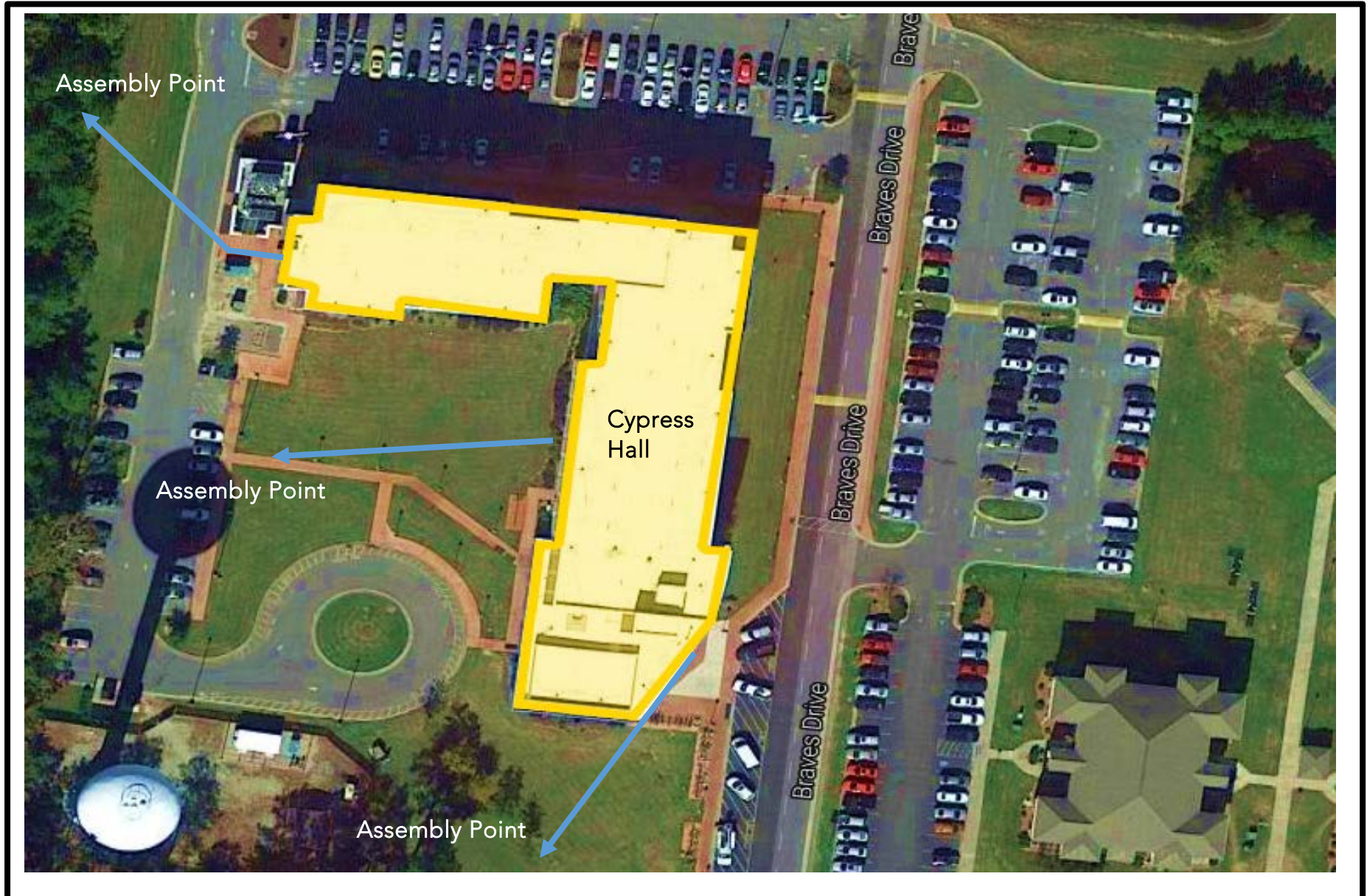
- QUAD AREA (ACROSS PARKING LOT)
- QUAD BETWEEN 567 C AND 567 B



## CYPRESS RESIDENCE HALL (62 BRAVES DRIVE)

### EVACUATION ASSEMBLY POINT

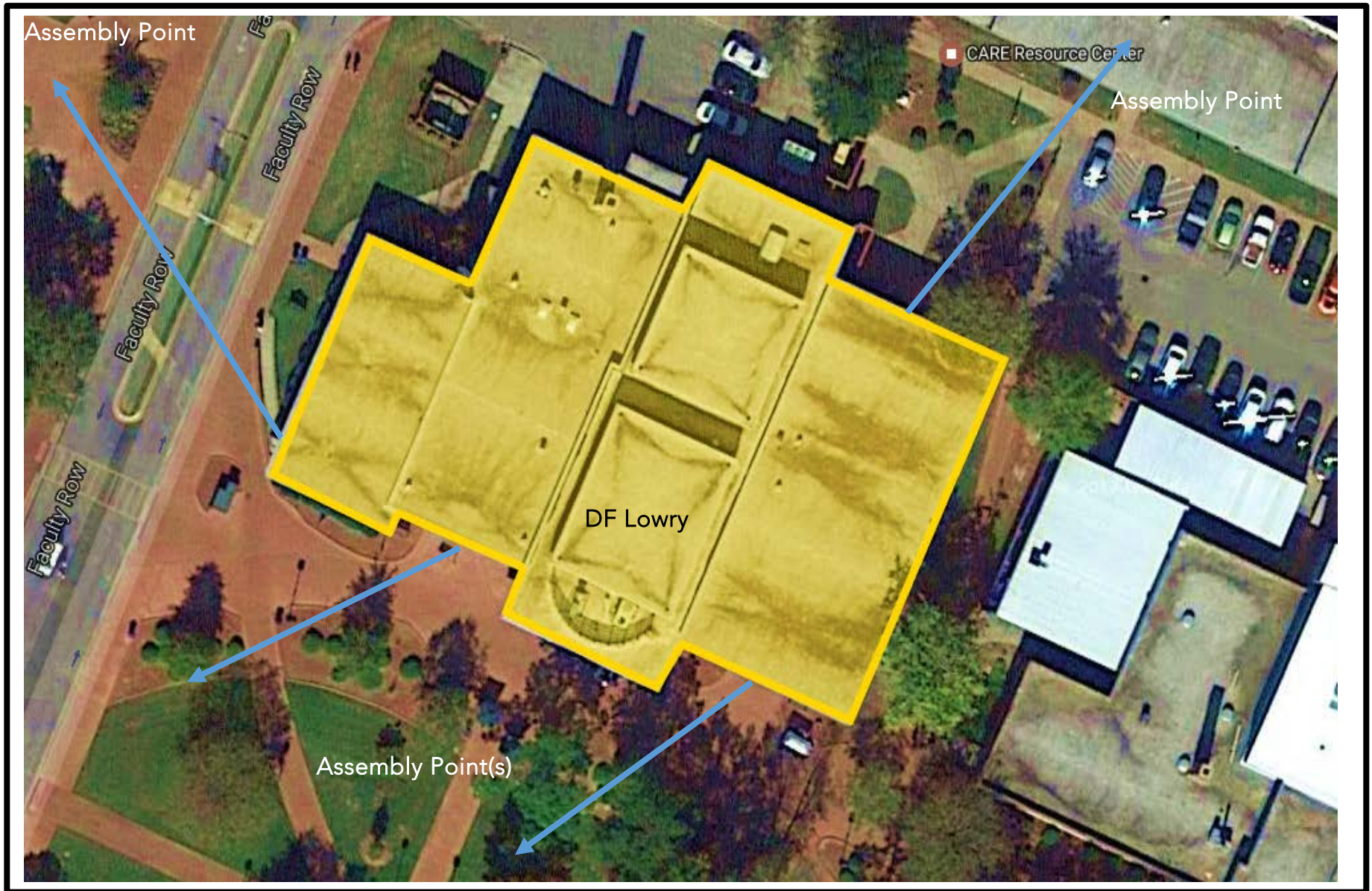
- QUAD AREA NORTH OF BUILDING
- COURTYARD AREA
- QUAD AREA SOUTH OF BUILDING



### DF LOWRY (136 FACULTY ROW)

#### EVACUATION ASSEMBLY POINT

- QUAD AREA NORTH OF BUILDING
- COURTYARD AREA



## DIAL HUMANITIES (379 BRAVES DRIVE)

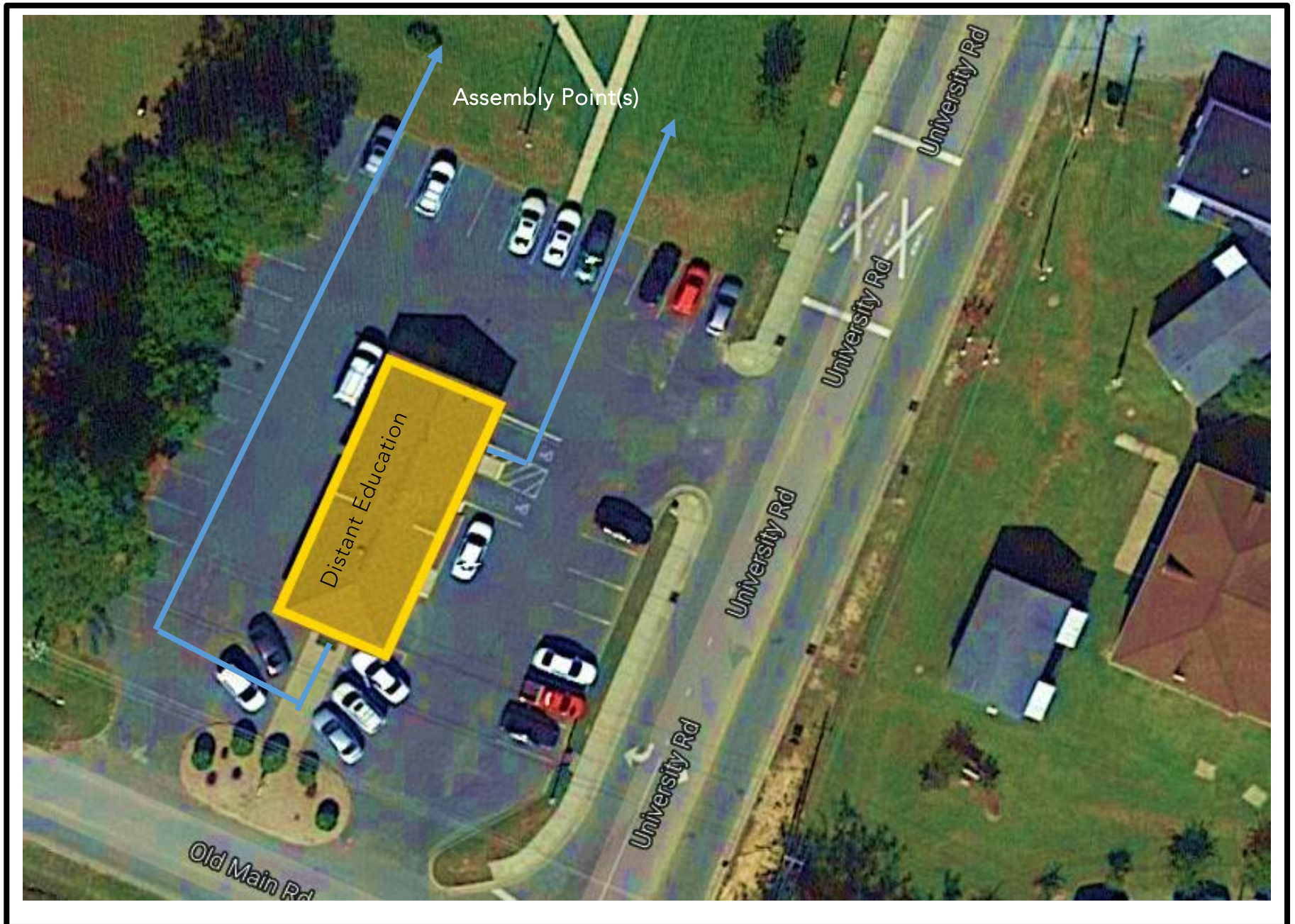
### EVACUATION ASSEMBLY POINT

- QUAD AREA NORTH OF BUILDING
- COURTYARD AREA



**DISTANT EDUCATION (57 UNIVERSITY ROAD)**  
EVACUATION ASSEMBLY POINT

- QUAD AREA NORTH OF BUILDING
- COURTYARD AREA



## DOGWOOD BUILDING (27 DOGWOOD LANE)

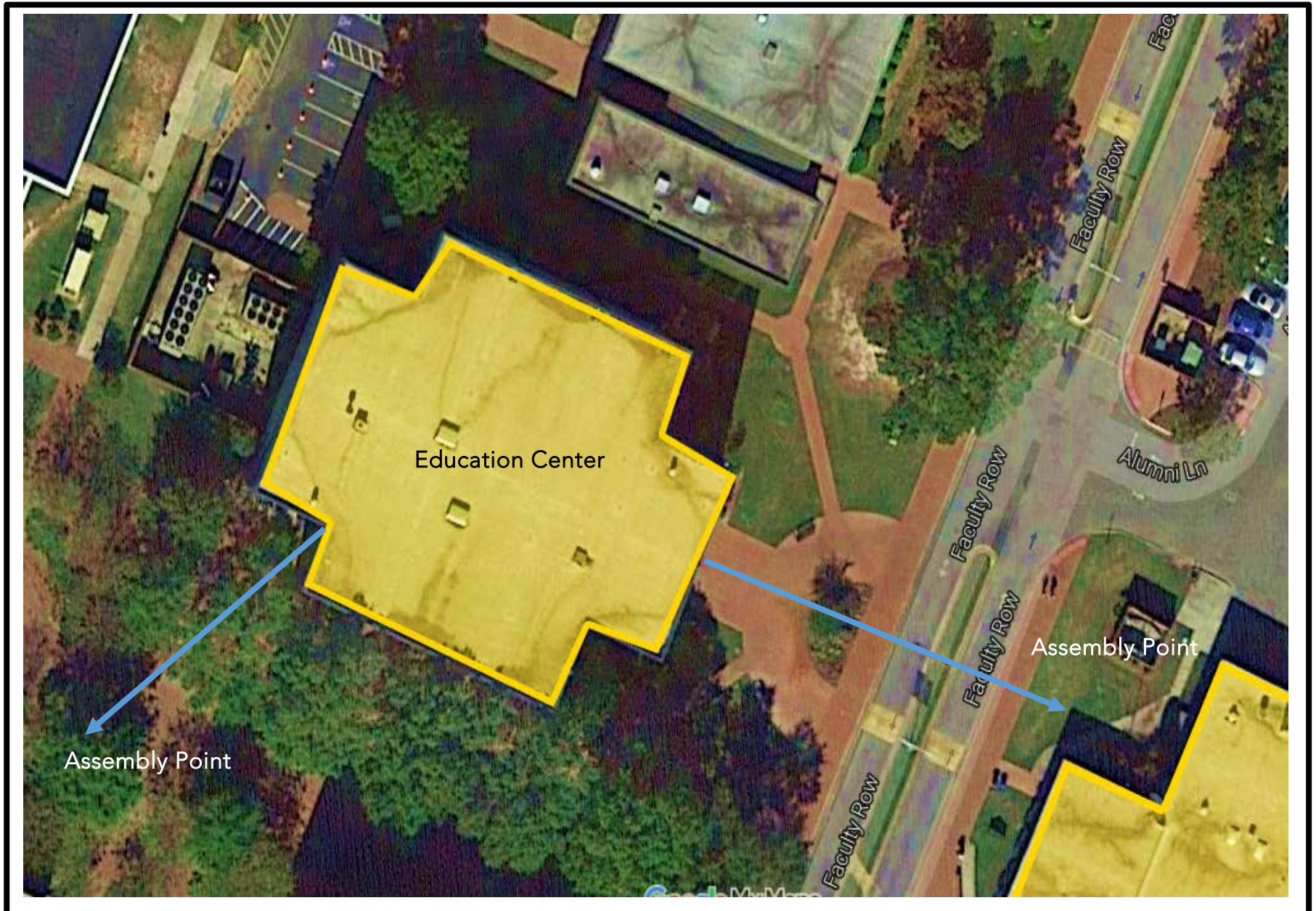
### EVACUATION ASSEMBLY POINT

- INTERNATIONAL PROGRAMS QUAD AREA
- BEHIND HOUSE NEAR BACK PARKING



**EDUCATION CENTER (141 FACULTY ROW)  
EVACUATION ASSEMBLY POINT**

- QUAD AREA ACROSS FACULTY ROAD
- COURTYARD AREA BEHIND NORTH HALL

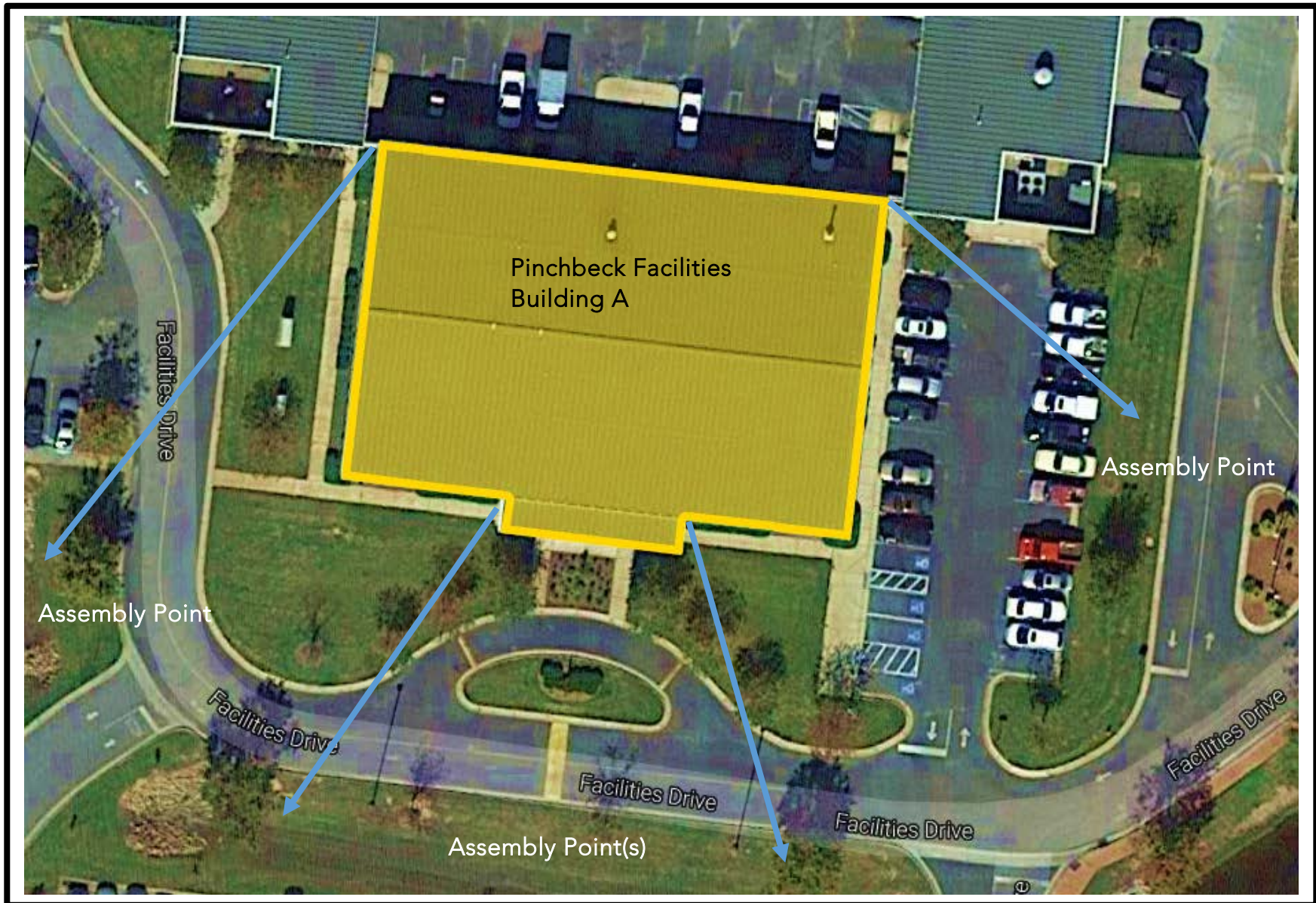




### PINCHBECK FACILITIES (128 A FACILITIES ROW)

#### EVACUATION ASSEMBLY POINT

- QUAD AREA SOUTH OF BUILDING
- QUAD AREA SOUTHEAST/SOUTHWEST



**PINCHBECK FACILITIES (128 B FACILITIES ROW)**

EVACUATION ASSEMBLY POINT

- QUAD AREA SOUTH OF BUILDING
- IN FRONT OF BUILDING D



**PINCHBECK FACILITIES (128 C FACILITIES ROW)**  
EVACUATION ASSEMBLY POINT

- QUAD AREA NORTH OF BUILDING (SOCCER FIELD)
- COURTYARD AREA SOUTH OF BUILDING



## PINCHBECK FACILITIES (128 D FACILITIES ROW)

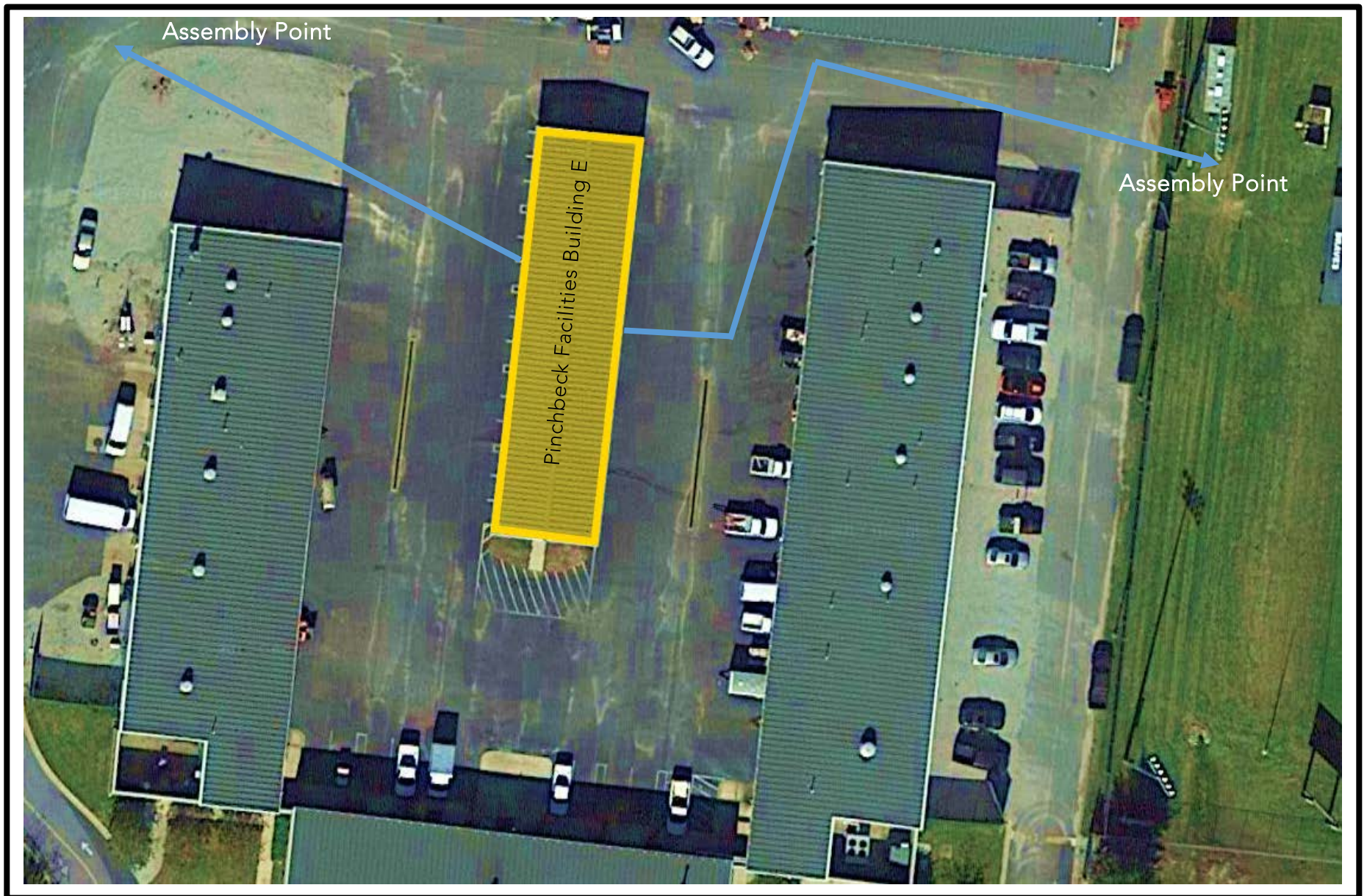
### EVACUATION ASSEMBLY POINT

- QUAD AREA NORTH OF BUILDING
- COURTYARD AREA SOUTH OF BUILDING



**PINCHBECK FACILITIES (128 E FACILITIES ROW)**  
EVACUATION ASSEMBLY POINT

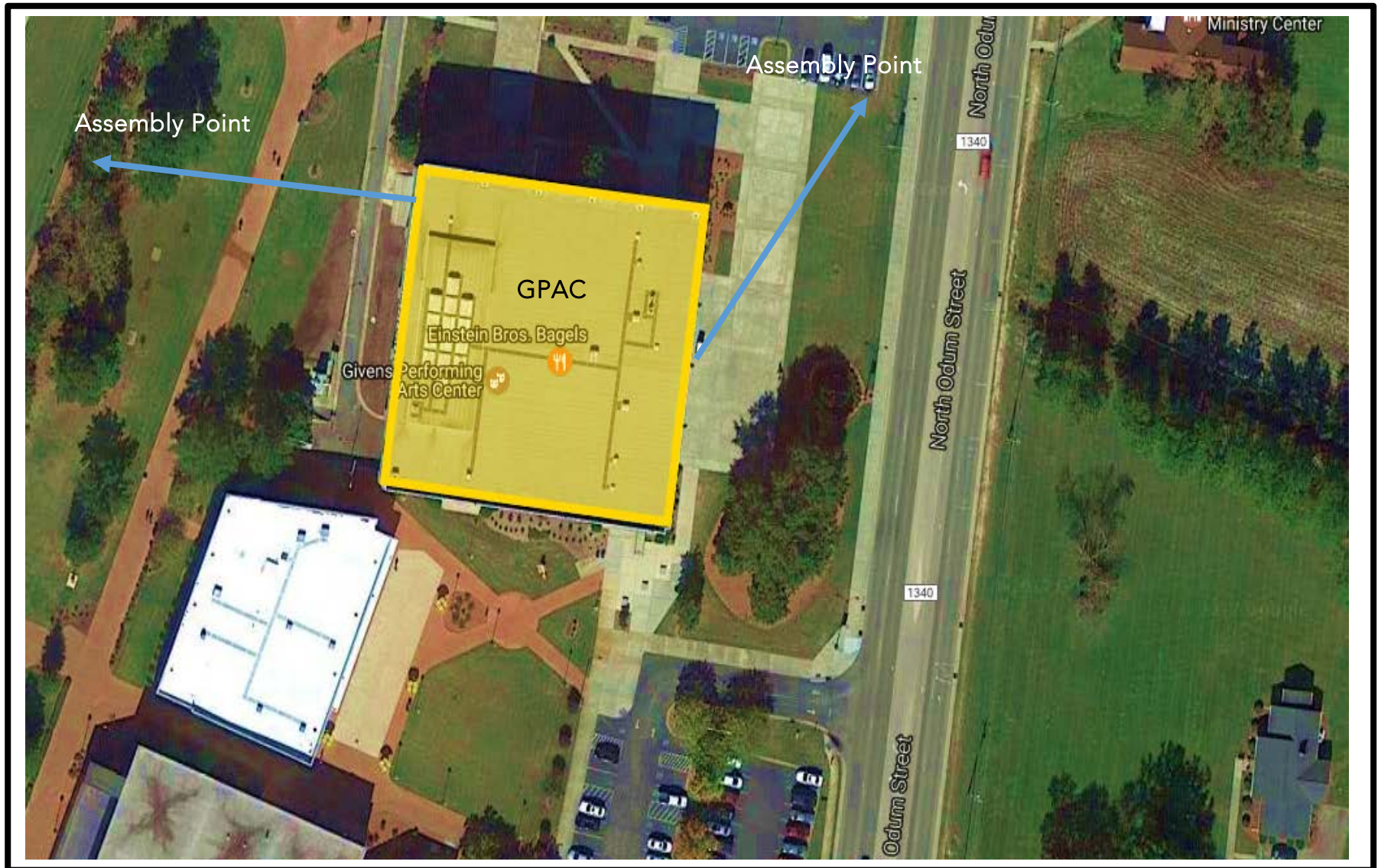
- COURTYARD AREA BEYOND BUILDING B
- SOCCER FIELD ENTRANCE AREA



## GPAC (359 PROSPECT ROAD)

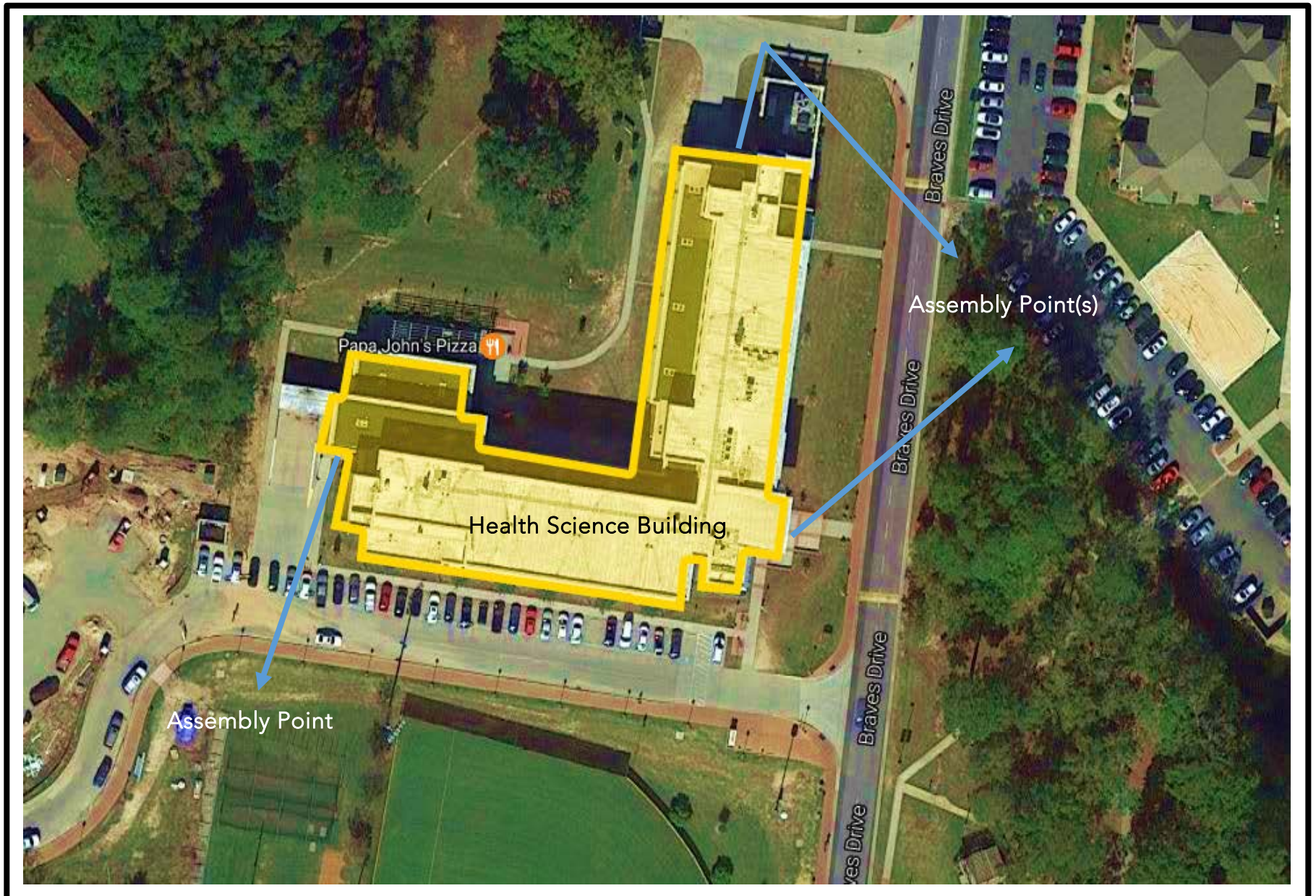
### EVACUATION ASSEMBLY POINT

- QUAD AREA NORTHEAST OF BUILDING
- COURTYARD AREA BETWEEN JONES PE



**HEALTH SCIENCE BUILDING (204 BRAVES DRIVE)**  
EVACUATION ASSEMBLY POINT

- QUAD AREA ACROSS BRAVES DRIVE
- ACROSS HAWK DRIVE SOFTBALL FIELD AREA



### HICKORY HALL (37 FACULTY ROW)

#### EVACUATION ASSEMBLY POINT

- QUAD AREA NORTH OF BUILDING
- COURTYARD AREA

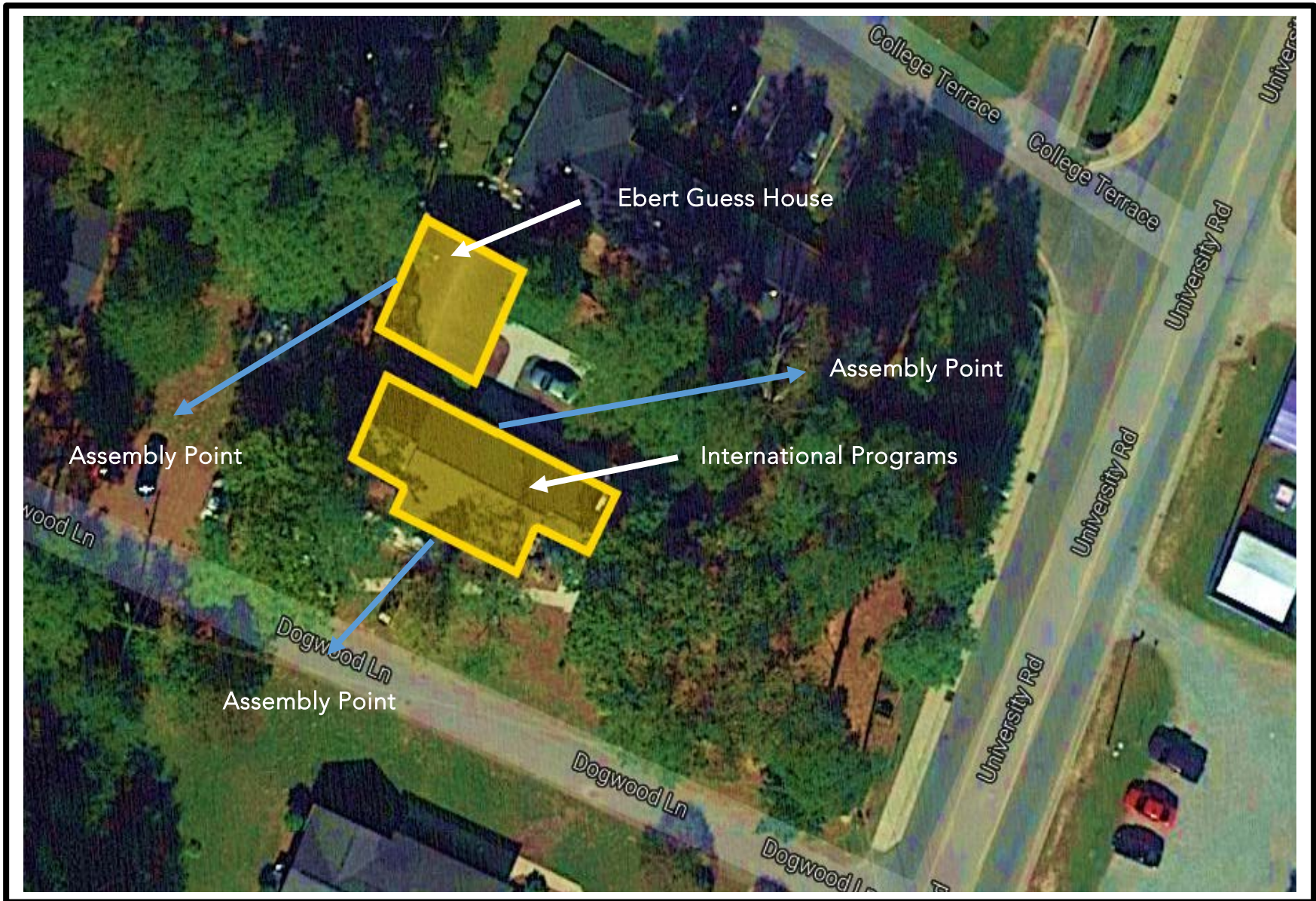




## INTERNATIONAL PROGRAMS / EBERT HOUSE (34 DOGWOOD LANE)

### EVACUATION ASSEMBLY POINT

- AREA ACROSS DOGWOOD LANE
- AREA BEHIND THE HOUSE



## JACOBS HALL (42 PSU COURT)

### EVACUATION ASSEMBLY POINT

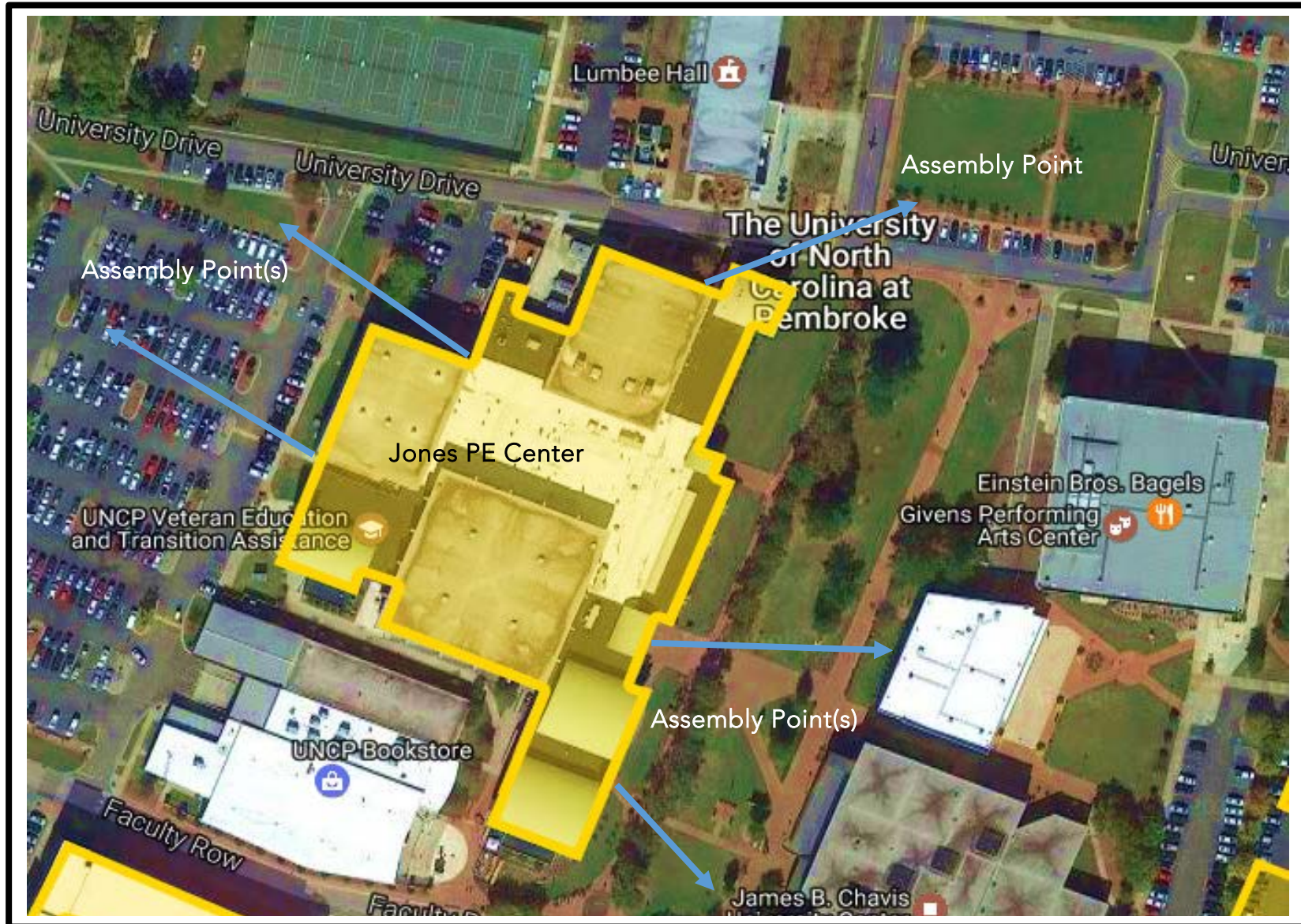
- QUAD AREA NEAR WELLONS
- QUAD AREA BETWEEN LOT 6/PROSPECT ROAD



### JONES PE CENTER (176 UNIVERSITY DRIVE)

#### EVACUATION ASSEMBLY POINT

- MULTIPLE ASSEMBLY POINTS



LINDSAY HALL (200-A ODOM STREET)

EVACUATION ASSEMBLY POINT

- QUAD AREA IN FRONT OF BUILDING



LIVERMORE LIBRARY (40 FACULTY ROW)  
EVACUATION ASSEMBLY POINT

- QUAD AREA BETWEEN LIVERMORE / OLD MAIN



## LOCKLEAR HALL (47 ALUMNI LAND)

### EVACUATION ASSEMBLY POINT

- QUAD AREA IN FRONT OF MOORE HALL
- QUAD AREA IN FRONT OF JACOBS HALL



**LUMBEE HALL (416 BRAVES DRIVE)**  
EVACUATION ASSEMBLY POINT

- QUAD AREA NORTH OF BUILDING
- COURTYARD AREA



**MAGNOLIA HOUSE (64 DOGWOOD LANE)**  
EVACUATION ASSEMBLY POINT

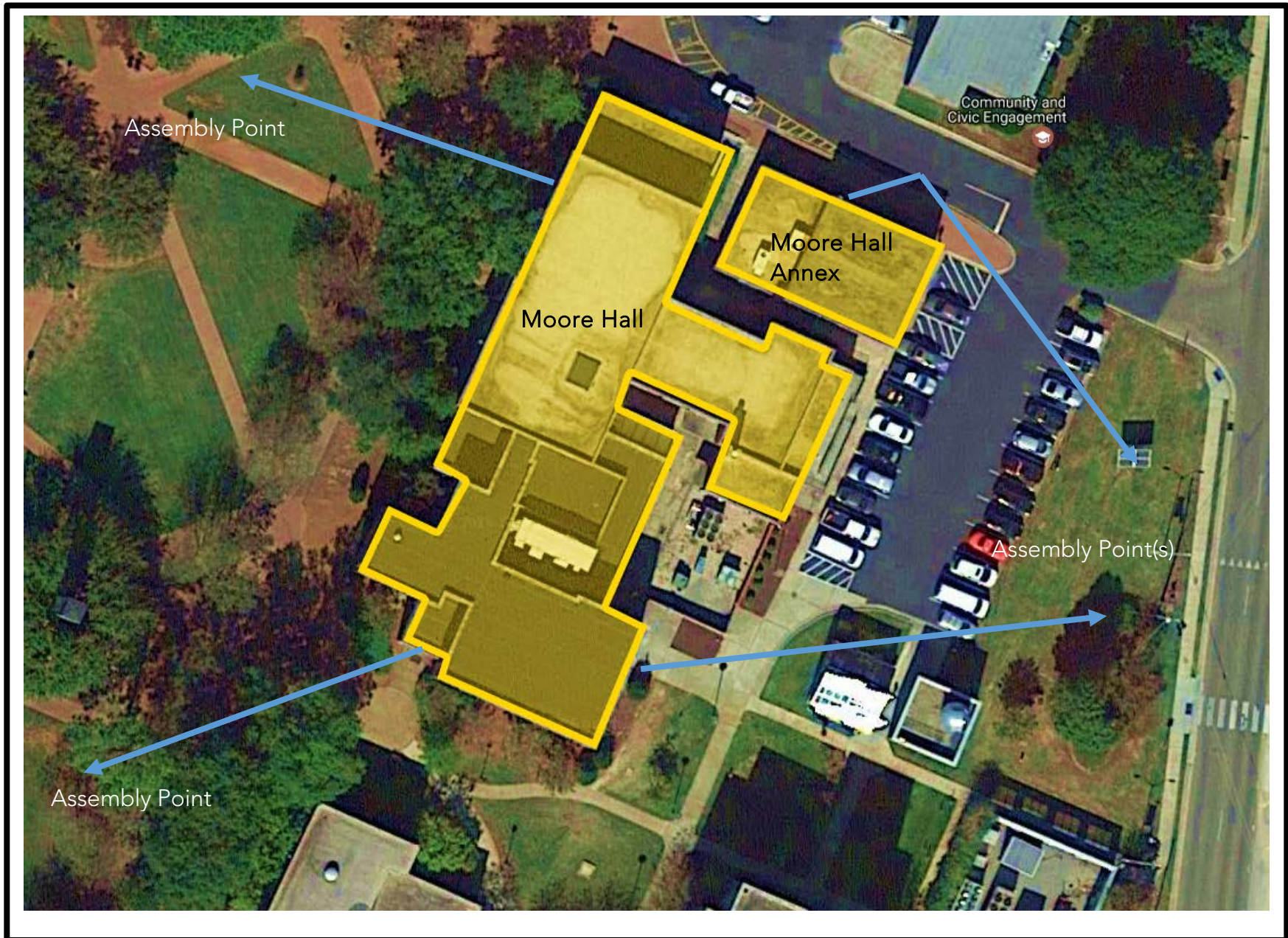
- AREA ACROSS DOGWOOD LANE
- BETWEEN MAGNOLIA AND INTERNATIONAL PROGRAMS





**MOORE HALL (19 PSU COURT)**  
EVACUATION ASSEMBLY POINT

- QUAD AREA NORTH OF BUILDING
- COURTYARD AREA



## NORTH HALL (105 FACULTY ROW)

### EVACUATION ASSEMBLY POINT

- QUAD AREA ACROSS FACULTY ROW
- QUAD AREA NEAR WATER FEATURE



## OAK HALL (287 FACULTY ROW)

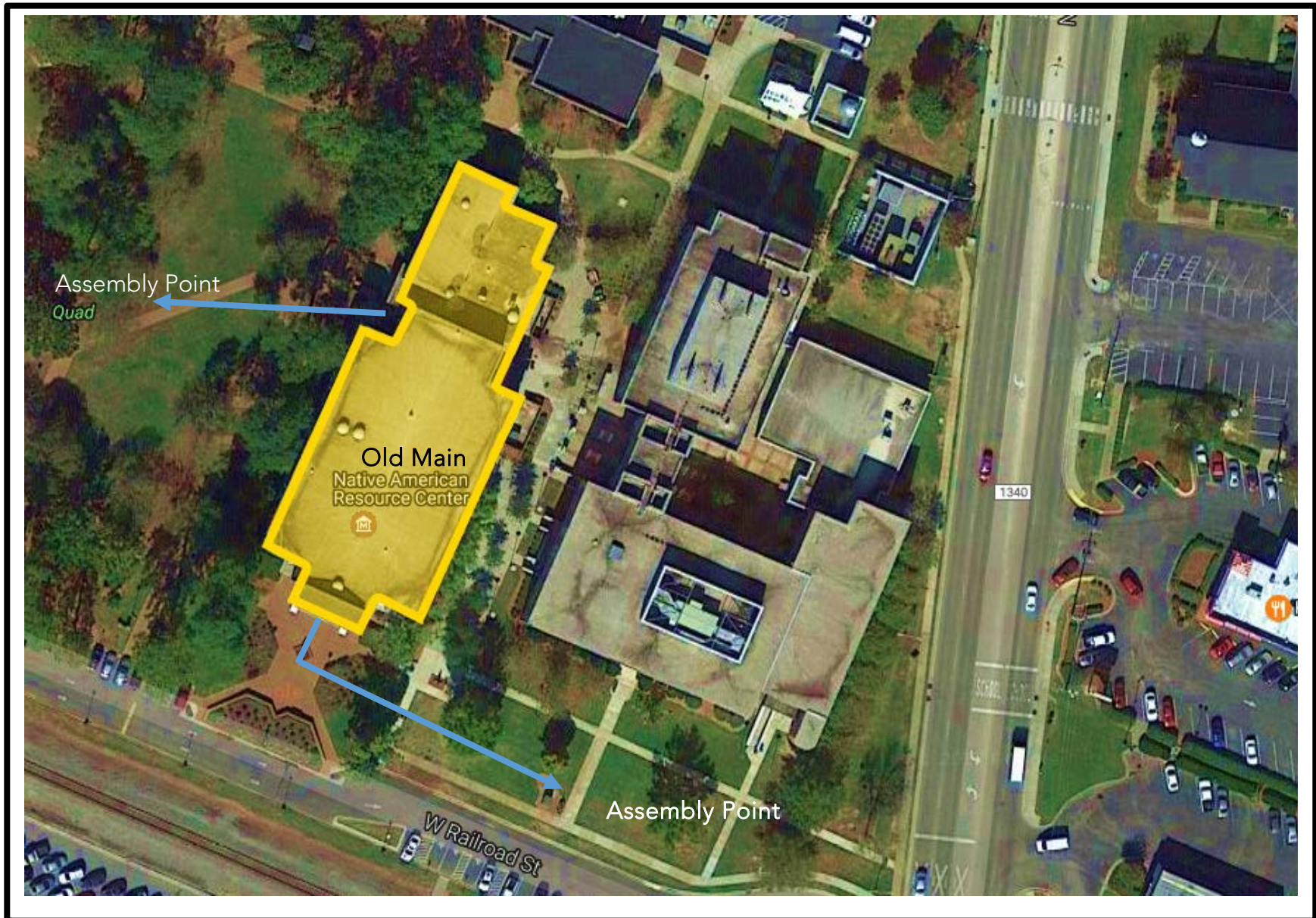
### EVACUATION ASSEMBLY POINT

- QUAD AREA NEAR BOOKSTORE
- AREA NEAR BASKETBALL COURT



**OLD MAIN (1369 OLD MAIN ROAD)  
EVACUATION ASSEMBLY POINT**

- QUAD AREA
- AREA IN FRONT OF OXENDINE



### OXENDINE SCIENCE (1403 OLD MAIN ROAD)

#### EVACUATION ASSEMBLY POINT

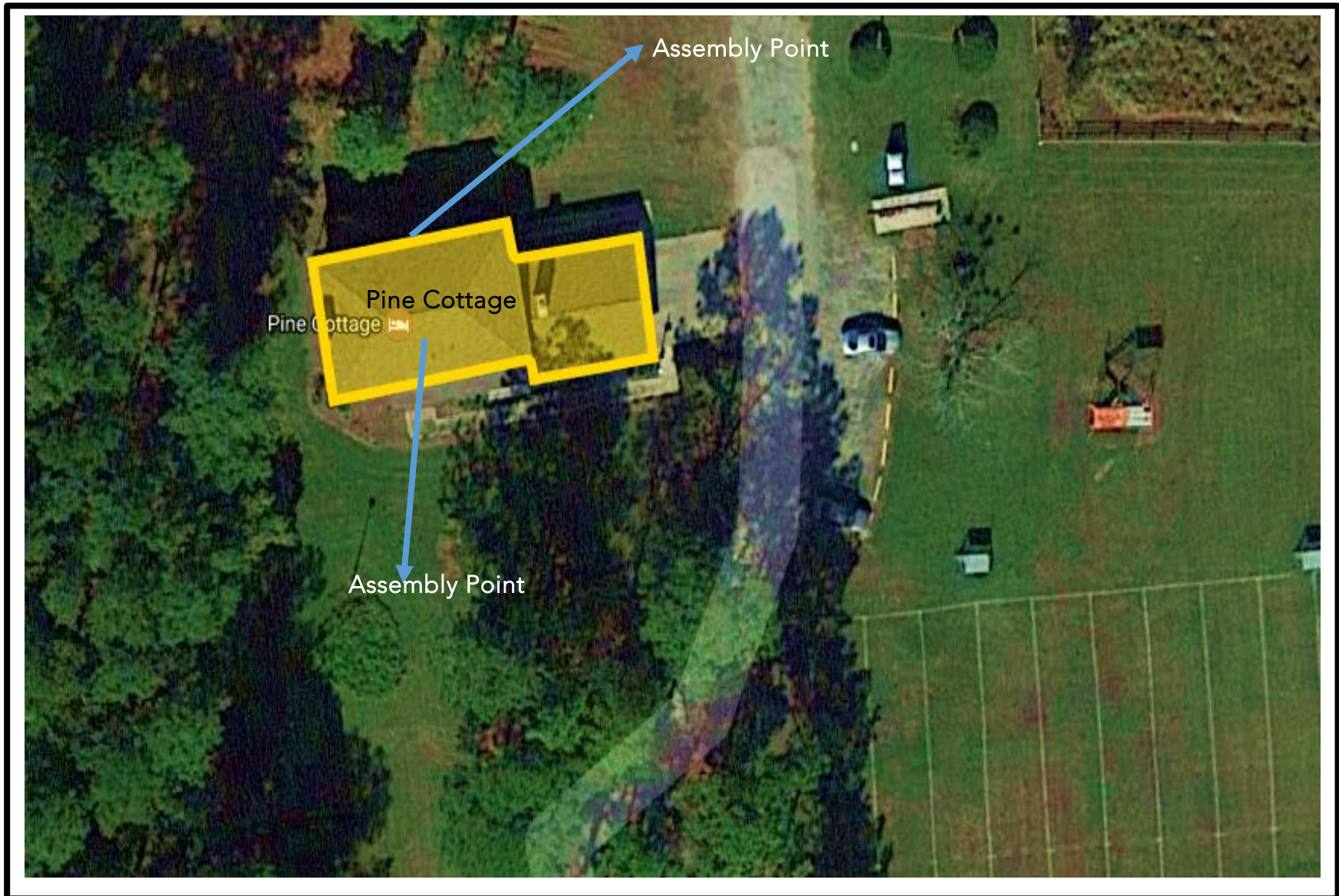
- AREA ACROSS W. RAILROAD STREET
- AREAS NORTH OF BUILDING



**PINE COTTAGE (205 ERNEST LOWRY ROAD)**

EVACUATION ASSEMBLY POINT

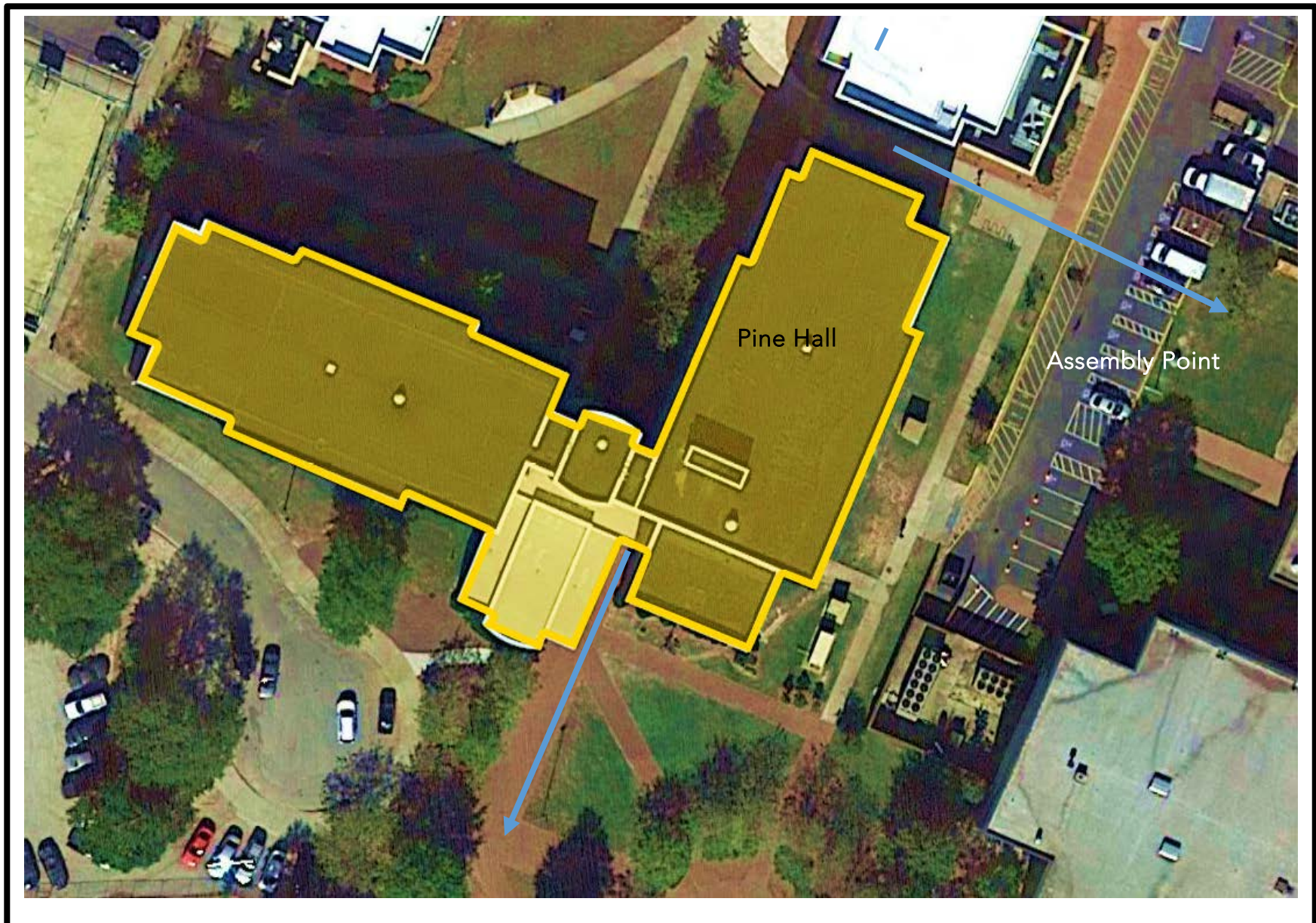
- AREA NORTH OF BUILDING
- AREA SOUTH OF BUILDING



## PINE HALL (239 FACULTY ROW)

### EVACUATION ASSEMBLY POINT

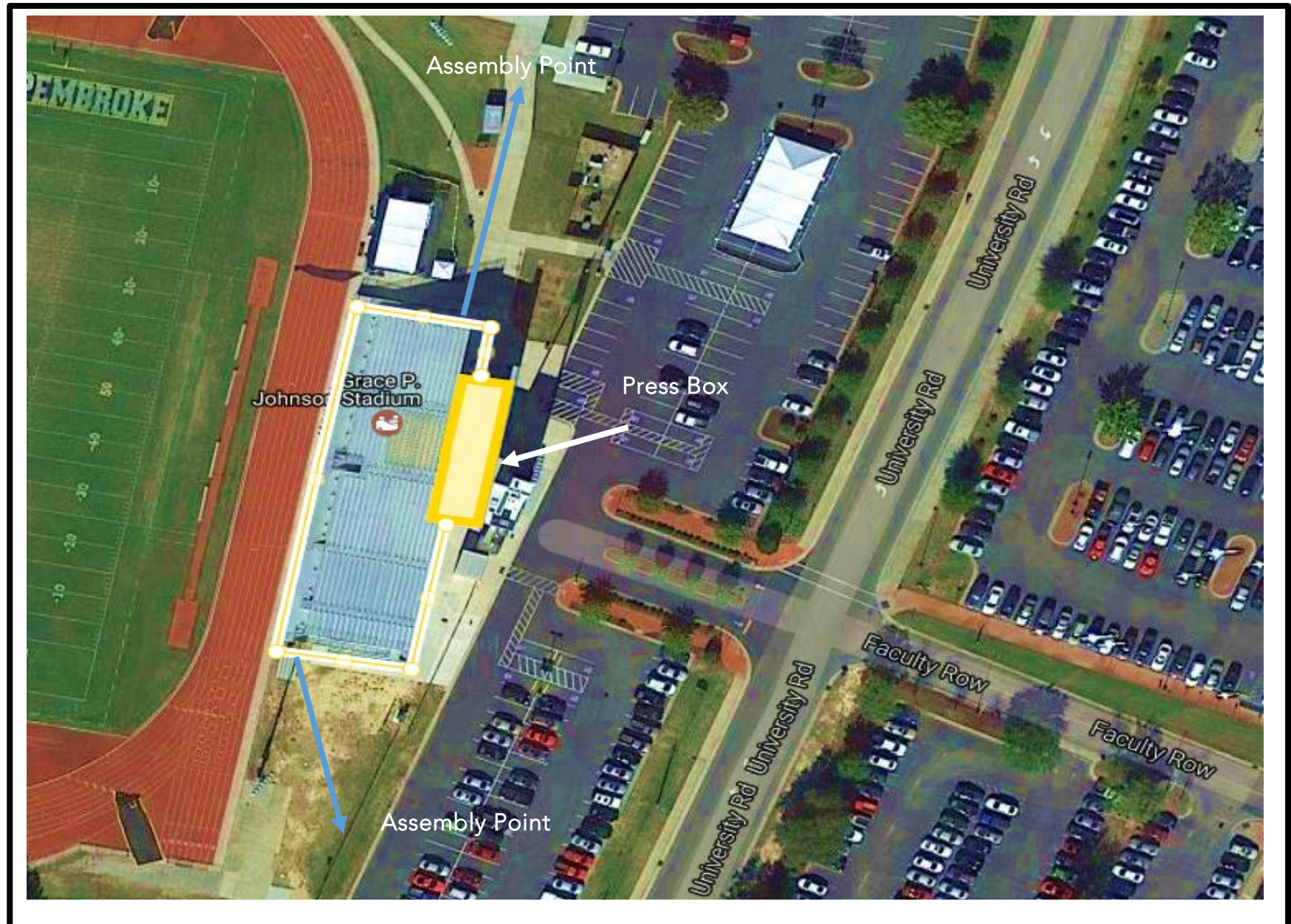
- AREA ACROSS LOT 11
- COURTYARD AREA SOUTH OF BUILDING



## PRESS BOX (16 CURT LOCKLEAR DRIVE)

### EVACUATION ASSEMBLY POINT

- NORTH QUAD AREA OF BUILDING
- SOUTH QUAD AREA OF BUILDING





**ROTC (1131 PROSPECT ROAD)**

EVACUATION ASSEMBLY POINT

- AREA NORTHWEST OF BUILDING
- AREA SOUTHEAST OF BUILDING



## SAMPSON BUILDING (301 BRAVES DRIVE)

### EVACUATION ASSEMBLY POINT

- CORNER OF INTERMURAL FIELD
- AREA NORTH OF PARKING LOT 19



**OLD STUDENT HEALTH SERVICE (49 FACULTY ROW)  
EVACUATION ASSEMBLY POINT**

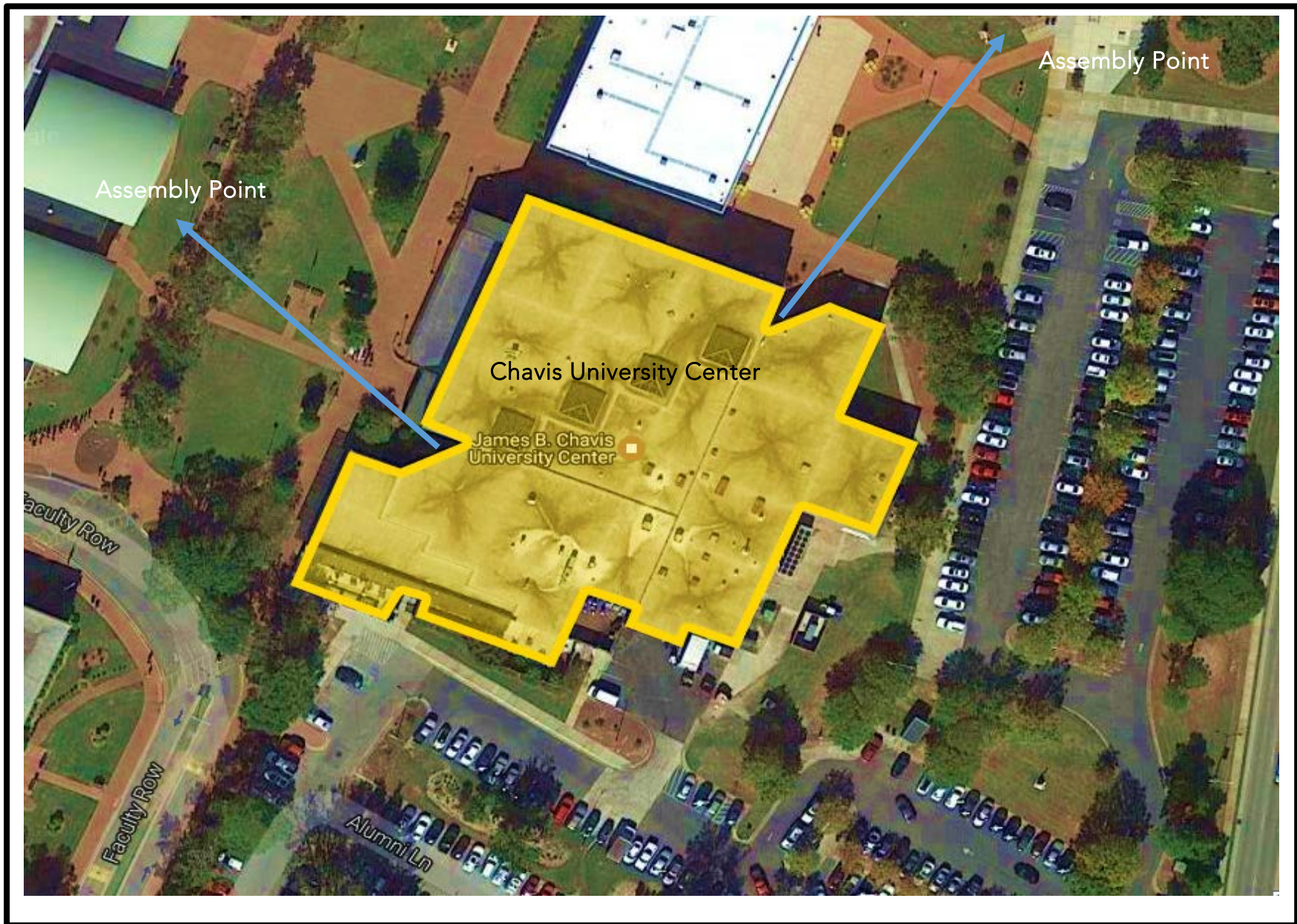
- AREA IN FRONT OF LIVERMORE LIBRARY



## CHAVIS UNIVERSITY CENTER (209 ODOM STREET)

### EVACUATION ASSEMBLY POINT

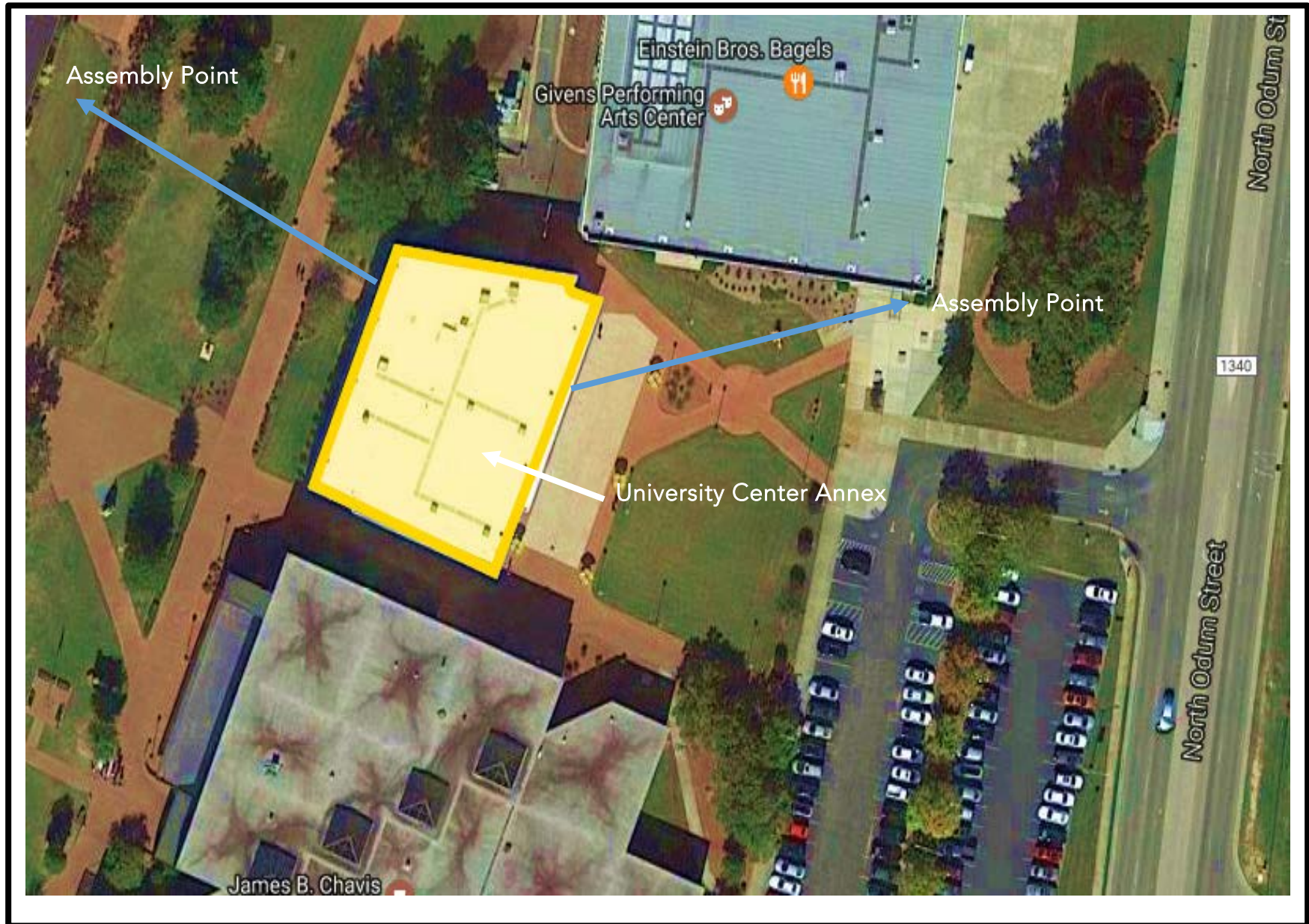
- AREA NORTHEAST OF BUILDING NEAR GPAC
- AREA IN FRONT OF JONES PE CENTER



**UNIVERSITY CENTER ANNEX (239 ODOM STREET)**

EVACUATION ASSEMBLY POINT

- AREA NEAR GPAC
- AREA IN FRONT OF JONES PE CENTER



## UNIVERSITY VILLAGE APARTMENTS (717A PROSPECT ROAD)

### EVACUATION ASSEMBLY POINT

- AREA NORTH OF BUILDING
- AREA NORTHWEST OF BUILDING



UNIVERSITY VILLAGE APARTMENTS (717B PROSPECT ROAD)

EVACUATION ASSEMBLY POINT

- NEAR COMMUNITY BUILDING
- NEAR VOLLEYBALL COURT

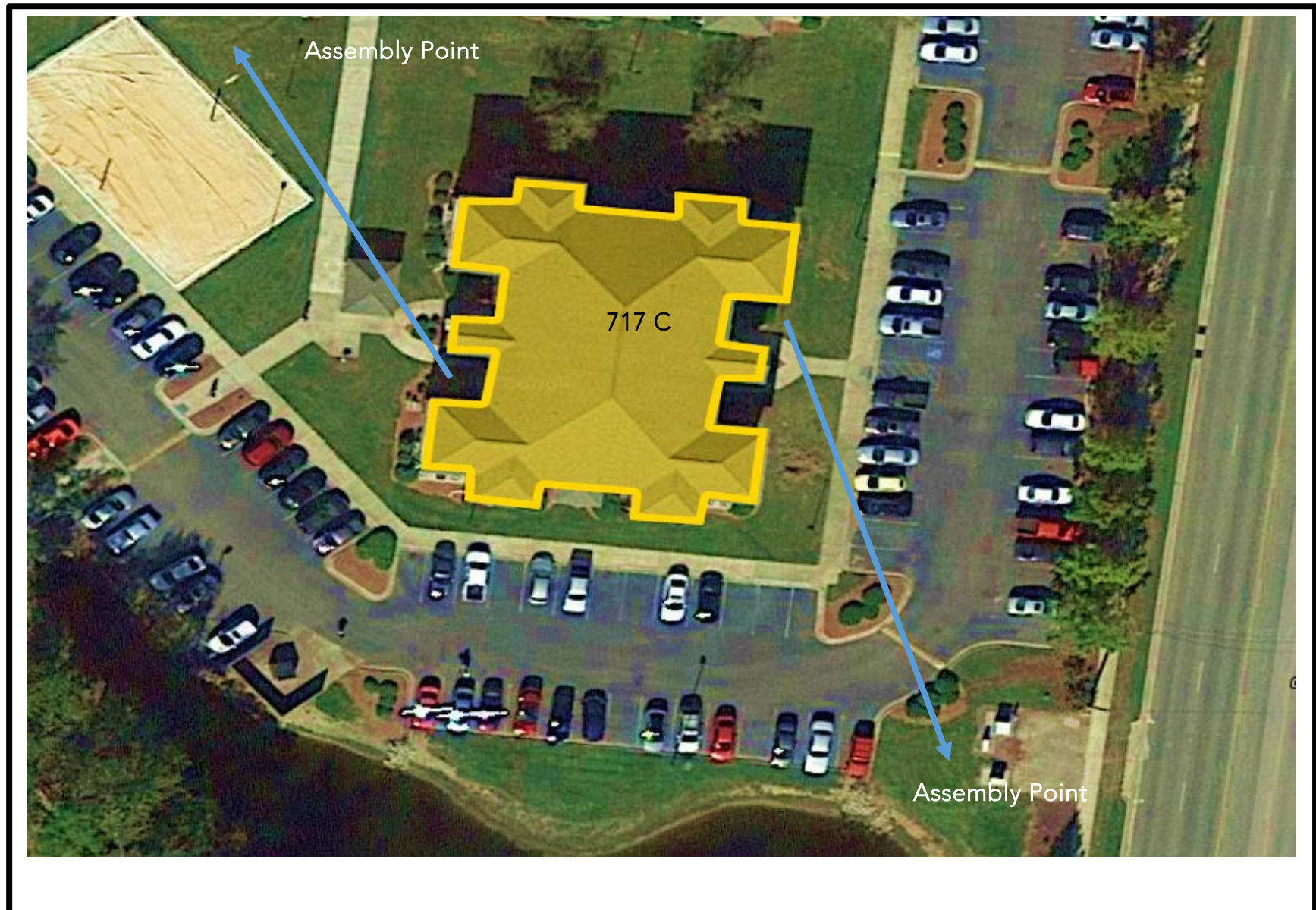


UNIVERSITY VILLAGE APARTMENTS (717C PROSPECT ROAD)

EVACUATION ASSEMBLY POINT

NEAR VOLLEYBALL COURT

- AREA SOUTH OF BUILDING





UNIVERSITY VILLAGE APARTMENTS (717D PROSPECT ROAD)  
EVACUATION ASSEMBLY POINT

- AREA NEAR COMMUNITY BUILDING
- AREA NEAR VOLLEYBALL COURSE



UNIVERSITY VILLAGE APARTMENTS (717E PROSPECT ROAD)

EVACUATION ASSEMBLY POINT

- AREA NEAR BRAVES DRIVE
- AREA IN BETWEEN BUILDINGS 717 C – 717 E



UNIVERSITY VILLAGE APARTMENTS (717F PROSPECT ROAD)

EVACUATION ASSEMBLY POINT

- AREA NORTH OF BUILDING



## WELLONS HALL (160 FACULTY ROW)

### EVACUATION ASSEMBLY POINT

- AREA BETWEEN FACULTY ROW/ALUMNI LN
- AREA IN FRONT OF JACOBS HALL



## WEST HALL (129 FACULTY ROW)

### EVACUATION ASSEMBLY POINT

- AREA BETWEEN NORTH HALL AND EDUCATION CENTER
- AREA BETWEEN BELK HALL AND STUDENT HEALTH



