

# Does Your Project Require an Application to the UNCP IRB Office?

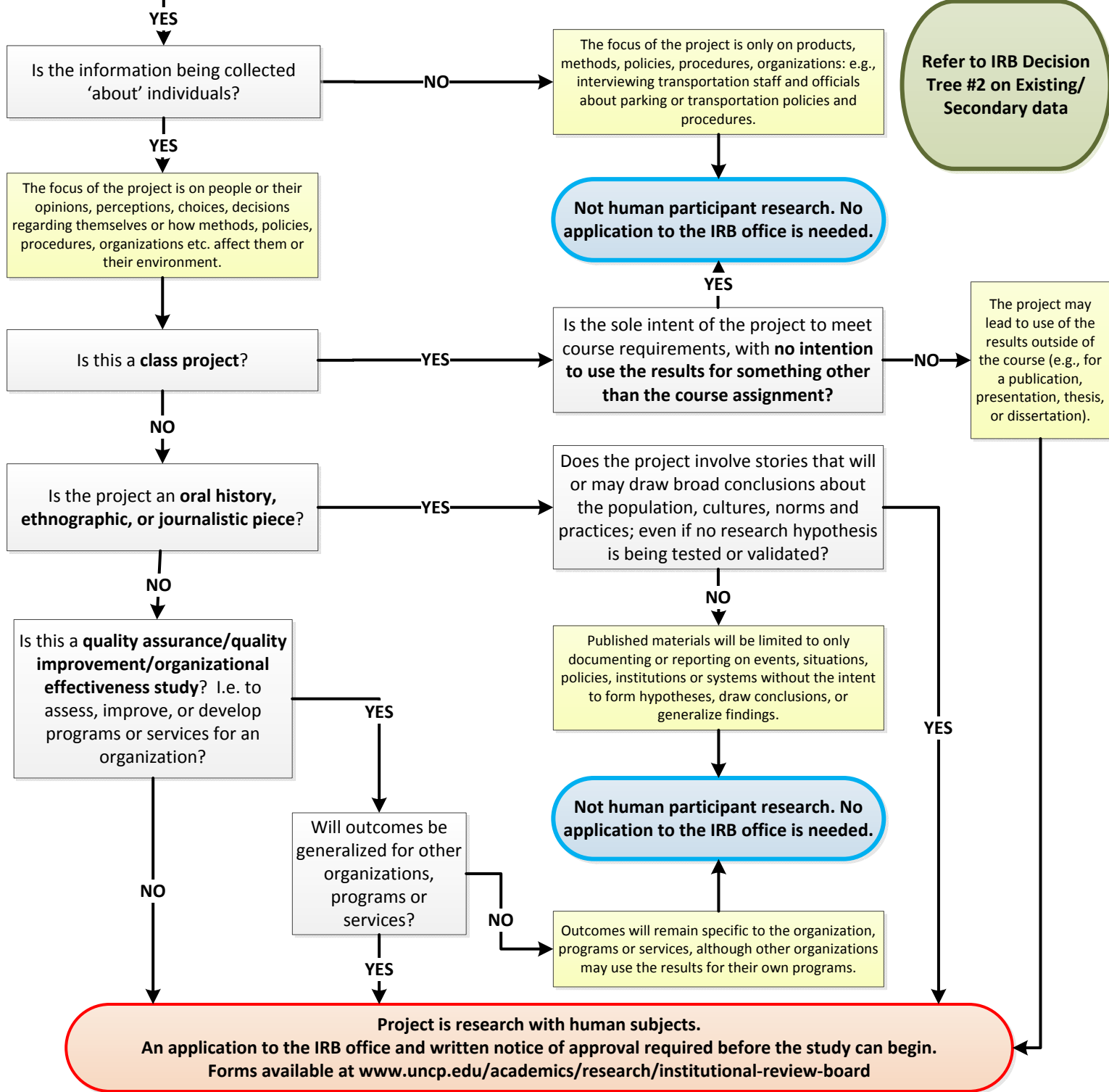
## Decision Tree #1

**Will you, a member of your research team or a collaborator observe, interact with, or intervene with individuals to gather information that will be used for research?** Examples:

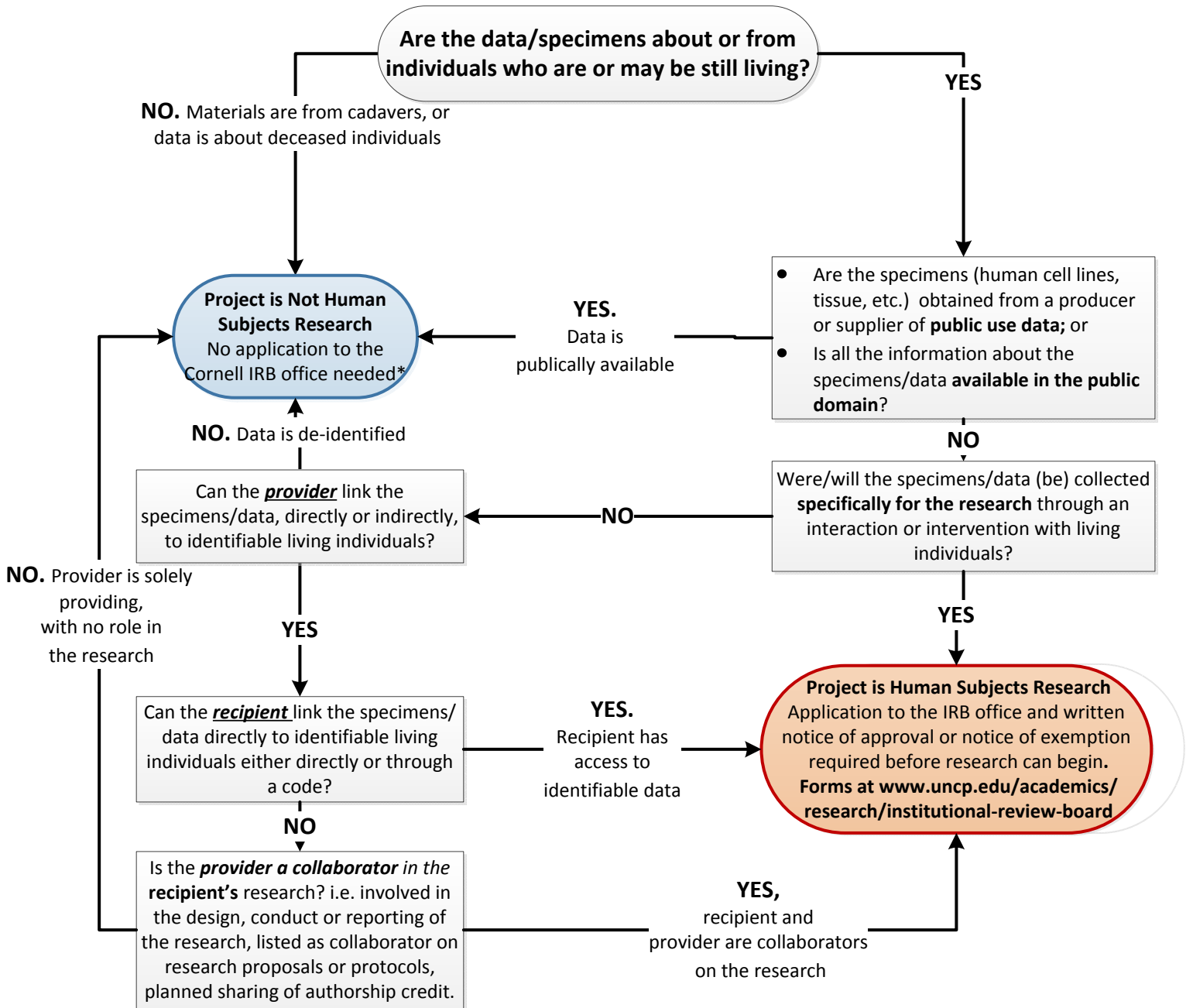
- Surveys, questionnaires, focus groups, interviews
- Games, experiments in physical or in electronic environments
- Physical or biomedical procedures – imaging, scanning, blood collection, anthropomorphic procedures
- Diet, nutrition studies, taste tests
- Studies examining effectiveness of educational tools or curricula
- Use of instruments or devices, including phones, to collect data or monitor or influence behavior
- Passive observation of public behavior (in physical or online environments, including social media)
- Studies examining individuals' responses to manipulation of their physical or online environment
- Another activity that involves observation of, or interaction with, individuals to gather information for research

**NO,  
research will use  
only existing data**

**Refer to IRB Decision  
Tree #2 on Existing/  
Secondary data**



**Does Your Research Involving Secondary or Existing Data, Documents or Biological Specimens  
Require Review by the UNCP IRB Office?  
Decision Tree #2**



\*Contact the UNCP Office of Sponsored Research and Programs ([www.uncp.edu/osrp](http://www.uncp.edu/osrp)) if acquiring the data requires a Data use Agreement or a Materials Transfer Agreement between the provider and recipient.

**Reference:**

“Research Involving Private Information or Biological Specimens Flowchart”, National Institute of Health (NIH), January 2006, <https://grants.nih.gov/grants/policy/hs/PrivateInfoOrBioSpecimensDecisionChart.pdf>