

# ROOF REPLACEMENT FOR UNC PEMBROKE - OXENDINE SCIENCE BLDG. AND LIVERMORE LIBRARY

SCO ID: 22-24804-02A      CODE: 42131      ITEM: 332

1 UNIVERSITY DRIVE

PEMBROKE, NORTH CAROLINA 28372

## DRAWING SHEET INDEX

- G0.0 - COVER SHEET
- G1.1** - BUILDING CODE SUMMARY AND GENERAL ROOFING NOTES
- R1.1** - OXENDINE SCIENCE BUILDING - ROOF PLANS (ROOF AREAS '2', '3' & '4' - BASE BID, ROOF AREAS '8', '9' AND '10' - ALTERNATE 2)
- R1.1A** - LIVERMORE LIBRARY - ROOF PLAN (ALTERNATE 3)
- R1.2** - PARTIAL ENLARGED ROOF PLAN (ROOF AREAS '5', '6' & '7' - ALTERNATE 1), SECUREMENT ZONES & WALKPAD LAYOUT
- R2.1** - OXENDINE SCIENCE BUILDING - SECTIONS AND DETAILS - (ROOF AREAS '2', '3' & '4' - BASE BID)
- R2.1A** - LIVERMORE LIBRARY ROOF AREA - SECTIONS AND DETAILS - (ALTERNATE 3)
- R2.2** - OXENDINE SCIENCE BUILDING - SECTIONS AND DETAILS - (ROOF AREAS - '2' THRU '10')
- R2.3** - OXENDINE SCIENCE BUILDING - SECTIONS AND DETAILS - (ROOF AREAS '5', '6' & '7' - ALTERNATE 1)
- R2.4** - OXENDINE SCIENCE BUILDING - SECTIONS AND DETAILS - (ROOF AREAS '5', '6' & '7' - ALTERNATE 1)
- R2.5** - OXENDINE SCIENCE BUILDING - SECTIONS AND DETAILS - (ROOF AREAS '8', '9' & '10' - ALTERNATE 2)
- R2.6** - OXENDINE SCIENCE BUILDING - SECTIONS AND DETAILS - (ROOF AREAS '8', '9' & '10' - ALTERNATE 2)
- R3.1** - TYPICAL SECTIONS AND DETAILS
- R3.2** - TYPICAL SECTIONS AND DETAILS



GREENSBORO, NC  
CORPORATE OFFICE  
ASHEVILLE, NC  
CHARLESTON, SC  
CHARLOTTE, NC  
CHARLOTTESVILLE, VA  
RALEIGH-DURHAM, NC  
WILMINGTON, NC

SKA Consulting Engineers, Inc.  
100 Capitola Drive, Suite 109  
Durham, NC 27713-4411  
t. 984 349 5990  
www.skaeng.com  
NC License No. F-0508

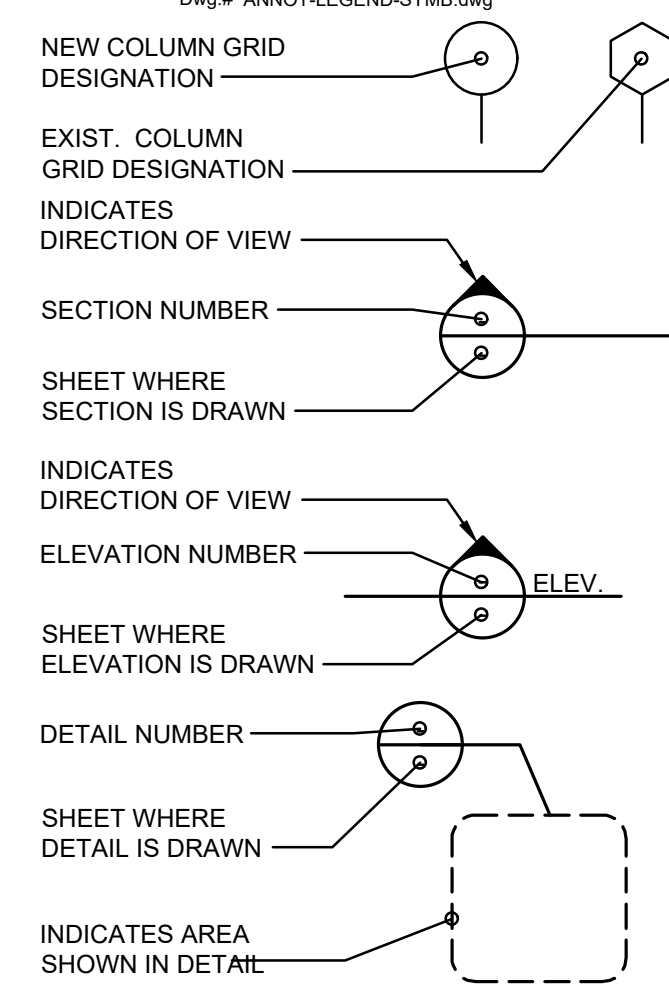
Quality. Integrity. Innovation.

**SKA JOB NUMBER: 220476.1**

## ABBREVIATIONS

A.B.	ANCHOR BOLT	LB.	POUND
ACI	AMERICAN CONCRETE INSTITUTE	LG.	LONG
A.F.F.	ABOVE FINISHED FLOOR	LIN.	LINEAR
AISC	AMERICAN INSTITUTE OF STEEL CONSTRUCTION	LL	LIVE LOAD
ATC	AMERICAN INSTITUTE OF TIMBER CONSTRUCTION	LT. WT.	LIGHT WEIGHT
ALT.	ALTERNATE	M.O.S.	MIDDLE OF SLAB
ARCH.	ARCHITECTURAL	M.O.W.	MIDDLE OF WALL
ASTM	AMERICAN SOCIETY FOR TESTING AND MATERIALS	MATL.	MATERIAL
AVG.	AVERAGE	MAX.	MAXIMUM
AWS	AMERICAN WELDING SOCIETY	MIN.	MINIMUM
		MISC.	MISCELLANEOUS
		MK	MARK
		N/A	NOT APPLICABLE
		N.F.	NEAR FACE
BLDG.	BUILDING	N.I.C.	NOT IN CONTRACT
BM	BEAM	N.T.S.	NOT TO SCALE
B.P.	BEARING PLATE/BASE PLATE	N-S	NORTH-SOUTH
BRG.	BEARING	NCSCB	NORTH CAROLINA STATE BUILDING CODE
C.J.	CONSTRUCTION JOINT	NO.	NUMBER
CMU	CONCRETE MASONRY UNIT	NOM.	NOMINAL
CGS	CENTER OF GRAVITY OF STEEL	O/C	ON CENTER
CL.	CENTERLINE	O.D.	OUTSIDE DIAMETER
CLG.	CELLING	O.F.	OUTSIDE FACE
CLR.	CLEAR	OPNG.	OPENING
COL.	COLUMN	OPP.	OPPOSITE
CONC.	CONCRETE	O.H.	OPPOSITE HAND
CONN.	CONNECTION	ORIG.	ORIGIN
CONST.	CONSTRUCTION	PIS	PRESTRESSED
CONT.	CONTINUOUS	P/T	POST-TENSIONING
CRSI	CONCRETE REINFORCING STEEL INSTITUTE	P.C.	PRECAST CONCRETE
CTR.	CENTER	PCI	PRESTRESSED CONCRETE INSTITUTE
D.C.J.	DOWELED CONTROL JOINT	PEN.	PENETRATION
D.J.	DOUBLE JOIST	PERP.	PERPENDICULAR
D.S.	DOWN SPOUT	PL.	PLATE
DBL.	DOUBLE	PSF	POUNDS PER SQUARE FOOT
DET.	DETAIL	PSI	POUNDS PER SQUARE INCH
DIA.	DIAMETER	P.T.	PRESSURE TREATED
DIAG.	DIAGONAL	PTI	POST-TENSIONING INSTITUTE
DM.	DIMENSION	PVC	POLYVINYL CHLORIDE
DL	DEAD LOAD	R.	RADIUS
DN	DOWN	R.D.	ROOF DRAIN
DWG(S)	DRAWING(S)	RAD.	RADIUS
E.F.	EACH FACE	REF.	REFERENCE
E.S.	EACH SIDE	REF.	REFERENCE
E.W.	EACH WAY	REINF.	REINFORCE(D)
E-W	EAST-WEST	REINFORC.	REINFORCING
EA	EACH	REM.	REMAINING; REMAINDER
ELEV.	ELEVATION; ELEVATOR	REQ'D.	REQUIRED
ENGR.	ENGINEER		
EO	EQUAL	S.J.	SAWED JOINT
EXIST.	EXISTING	S.S.	STAINLESS STEEL
E.J.	EXPANSION JOINT	S.W.	SHORT WAY
EXT.	EXTERIOR	SCHED.	SCHEDULE
F.D.	FLOOR DRAIN	SECT.	SECTION
F.F.	FAR FACE	SHT.	SHEET
FDN.	FOUNDATION	SIM.	SIMILAR
FIN.	FINISH	SJI	STEEL JOIST INSTITUTE
FL.	FLOOR	SLBB	SHORT LEGS BACK TO BACK
FLG.	FLANGE	SLO	SHORT LEG OUTSTANDING
F.O.B.	FACE OF BRICK	S.O.G.	SLAB ON GRADE
FT	FOOT; FEET	SPEC(S)	SPECIFICATION(S)
FTG.	FOOTING	SQ.	SQUARE
FV	FIELD VERIFY	STD.	STANDARD
G.B.	GRADE BEAM	STL.	STEEL
GA.	GAGE; GAUGE	STRUCT.	STRUCTURAL
GALV.	GALVANIZED	SYM.	SYMMETRICAL
H.M.	HOLLOW METAL	T.O.C.	TOP OF CONCRETE
H.S.	HIGH STRENGTH	T.O.F.	TOP OF FOOTING
HEX. HD.	HEXAGONAL HEAD	T.O.S.	TOP OF SLAB; TOP OF STEEL
HSS	HOLLOW STRUCTURAL SHAPES	T.O.W.	TOP OF WALL
HT.	HEIGHT	T&B	TOP AND BOTTOM
I.D.	INSIDE DIAMETER	TEMP.	TEMPORARY
I.F.	INSIDE FACE	THRU	THROUGH
IN.	INCH-INCHES	TYF.	TYPICAL
IBC	INTERNATIONAL BUILDING CODE	U.L.	UNDERWRITERS LABORATORIES
INT.	INTERIOR; INTERSECTION	U.N.O.	UNLESS NOTED OTHERWISE
INT.	INTERIOR; INTERSECTION	W/O	WITHOUT
JST.	JOIST	W/	WITH
JT.	JOINT	W.P.	WORKING POINT
		W.W.F.	WELDED WIRE FABRIC
K	KIP (1,000 LBS.)		
K/FT	KIPS PER FOOT		
LLBB	LONG LEGS BACK TO BACK		
LLH	LONG LEG HORIZONTAL		
LLO	LONG LEG OUTSTANDING		
LLV	LONG LEG VERTICAL		
L.W.	LONG WAY		

## DRAWING SYMBOL LEGEND



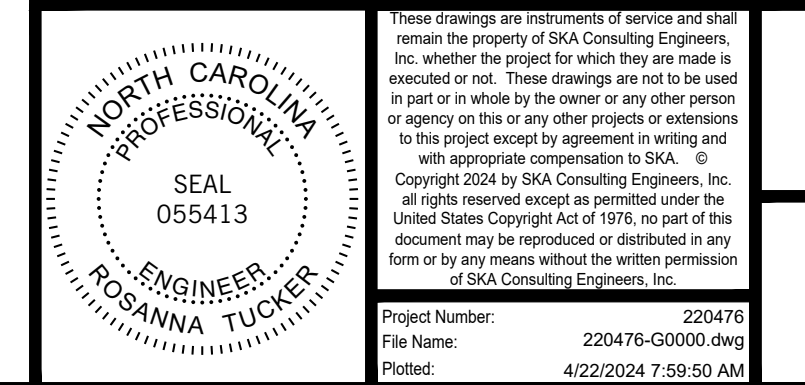
## MATERIALS AND SYMBOLS LEGEND

	BRICK (SECTION)		PLYWOOD (SECTION)		ITEM TO BE DEMOLISHED		WOOD (NEW CONTINUOUS)
	BRICK (ELEVATION)		FIBERBOARD		INSULATION (RIGID)		WOOD (EXISTING CONTINUOUS)
	CONCRETE		EARTH/SOIL		STEEL		
	CMU (SECTION)		FILL GROUT/ MORTAR		STONE FILL		
	CMU (ELEVATION)		GYPSUM BOARD		TECTUM ROOF DECK		
	LIGHT WEIGHT CONCRETE INSULATION		INSULATION (BATT)		WOOD (FINISH)		



Issued For:

CONSTRUCTION DOCUMENTS: BID SET



Date:  
04-22-2024  
Set No:

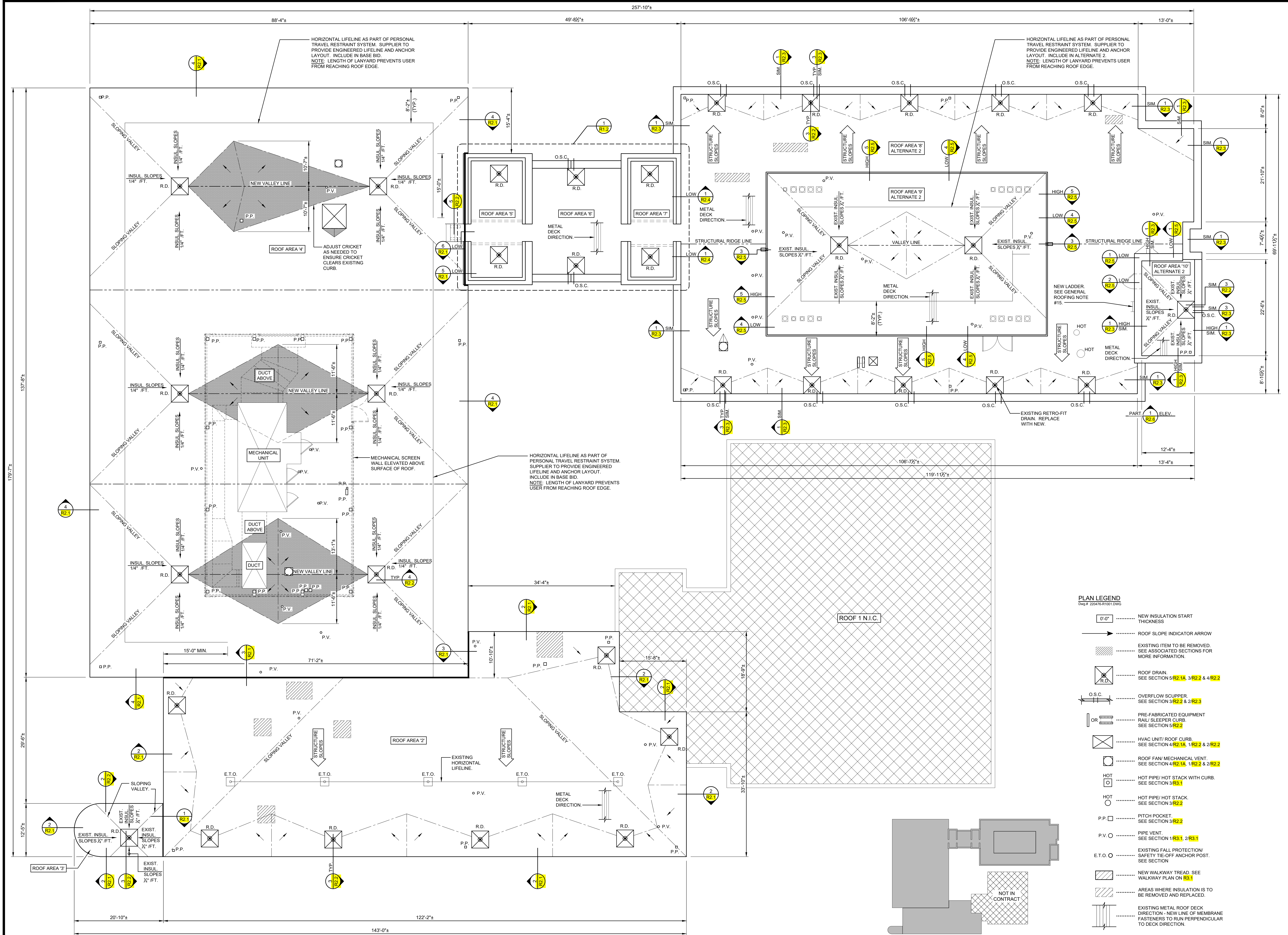
These drawings are instruments of service and shall remain the property of SKA Consulting Engineers, Inc. unless otherwise stated. These drawings are not to be used in part or in whole for any other project without the written consent of SKA Consulting Engineers, Inc. Copyright 2024 by SKA Consulting Engineers, Inc. All rights reserved. No part of this document may be reproduced or distributed in any form or by any means without the written permission of SKA Consulting Engineers, Inc.

Project Number: 220476  
File Name: 220476-01000.dwg  
Printed: 4/22/2024 7:39:50 AM









**OXENDINE SCIENCE BUILDING**  
**ROOF AREAS '2' THRU '10' - ROOF PLAN**

1  
R1.1  
1/8" = 1'-0"  
Dwg # 220476-R101.DWG

**KEY PLAN**  
NO SCALE  
Dwg # 220476-R102.DWG

CONSTRUCTION DOCUMENTS: BID SET

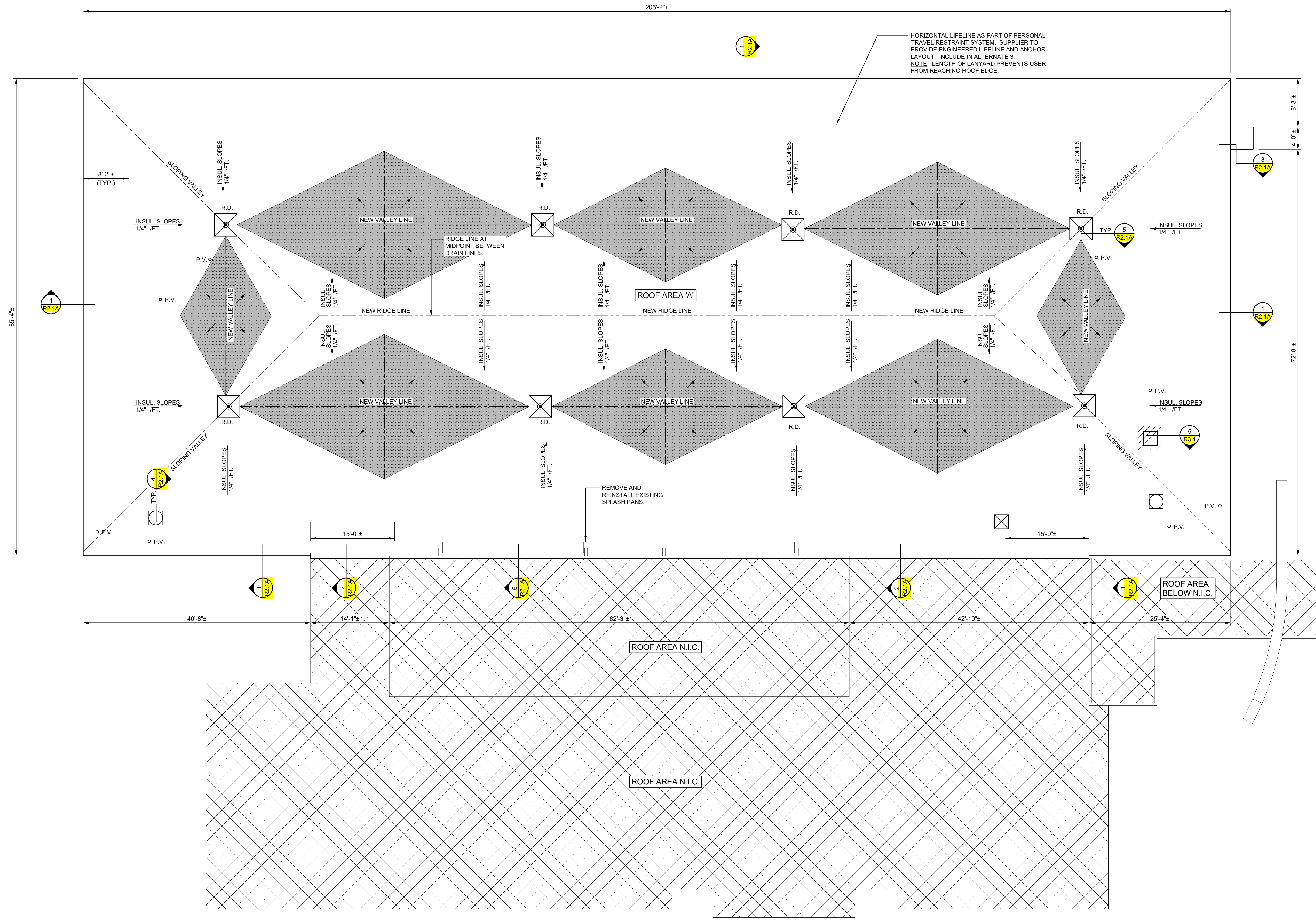
ROOF REPAIR FOR  
**UNC PEMBROKE - OXENDINE SCIENCE BUILDING AND LIVERMORE LIBRARY**  
UNIVERSITY DRIVE  
PEMBROKE, NORTH CAROLINA 28372

**OXENDINE SCIENCE BUILDING (ROOF AREAS '2' THRU '10')**  
**ROOF PLANS**

Designed By: RMT  
Drawn By: LIS, DGS  
Checked By: RMT  
Date: 04-22-2024

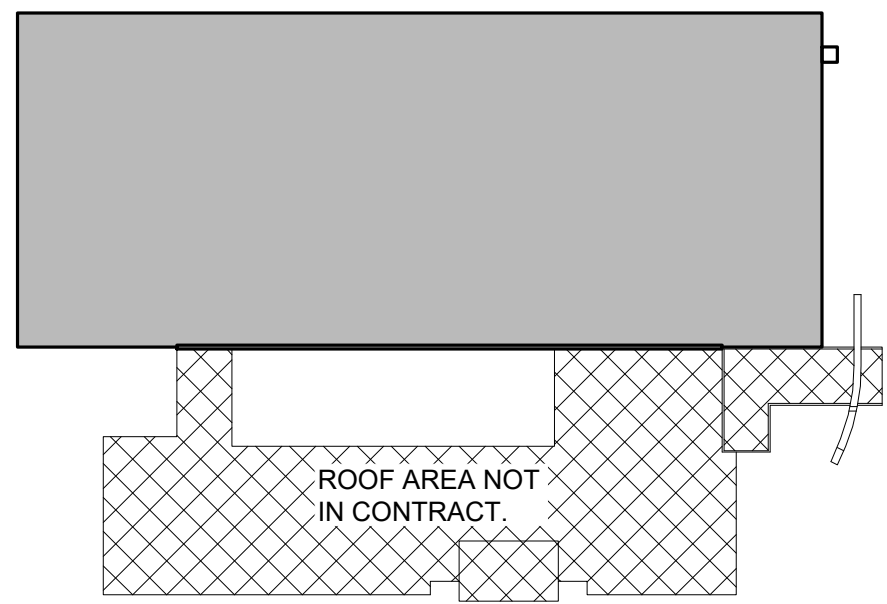
**R1.1**





**PLAN LEGEND**  
Dwg # 220476-R101A.DWG

- 0'-0" ..... NEW INSULATION START THICKNESS
- ..... ROOF SLOPE INDICATOR ARROW
- ..... EXISTING ITEM TO BE REMOVED. SEE ASSOCIATED SECTIONS FOR MORE INFORMATION.
- R.D. ..... ROOF DRAIN. SEE SECTION 5/R2.1A, 3/R2.2 & 4/R2.2
- O.S.C. ..... OVERFLOW SCUPPER. SEE SECTION 3/R2.2 & 2/R2.3
- OR ..... PRE-FABRICATED EQUIPMENT RAIL/SLEEPER CURB. SEE SECTION 5/R2.2
- ..... HVAC UNIT/ ROOF CURB. SEE SECTION 4/R2.1A, 1/R2.2 & 2/R2.2
- ..... ROOF FAN/ MECHANICAL VENT. SEE SECTION 4/R2.1A, 1/R2.2 & 2/R2.2
- HOT ..... HOT PIPE/ HOT STACK WITH CURB. SEE SECTION 3/R3.1
- HOT ..... HOT PIPE/ HOT STACK. SEE SECTION 3/R2.2
- P.P. ..... PITOH ROCKET. SEE SECTION 5/R2.2
- P.V. ..... PIPE VENT. SEE SECTION 1/R3.1, 2/R3.1
- E.T.O. ..... EXISTING FALL PROTECTION/ SAFETY TIE-OFF ANCHOR POST. SEE SECTION
- ..... NEW WALKWAY TREAD. SEE WALKWAY PLAN ON R3.1
- ..... AREAS WHERE INSULATION IS TO BE REMOVED AND REPLACED.
- ..... EXISTING METAL ROOF DECK DIRECTION - NEW LINE OF MEMBRANE FASTENERS TO RUN PERPENDICULAR TO DECK DIRECTION.



**LIVERMORE LIBRARY (ALTERNATE 3)**  
**ROOF PLAN**  
1/8" = 1'-0"  
Dwg # 220476-R2001.DWG

**KEY PLAN**  
NO SCALE  
Dwg # 220476-R2006.DWG

CONSTRUCTION DOCUMENTS: BID SET

ROOF REPAIR FOR  
**UNC PEMBROKE - OXENDINE SCIENCE BUILDING AND LIVERMORE LIBRARY**  
UNIVERSITY DRIVE  
PEMBROKE, NORTH CAROLINA 28372  
**LIVERMORE LIBRARY - ROOF PLAN (ALTERNATE 3)**

Designed By: RMT  
Drawn By: DQS  
Checked By: RMT  
Date: 04-22-2024

**R1.1A**

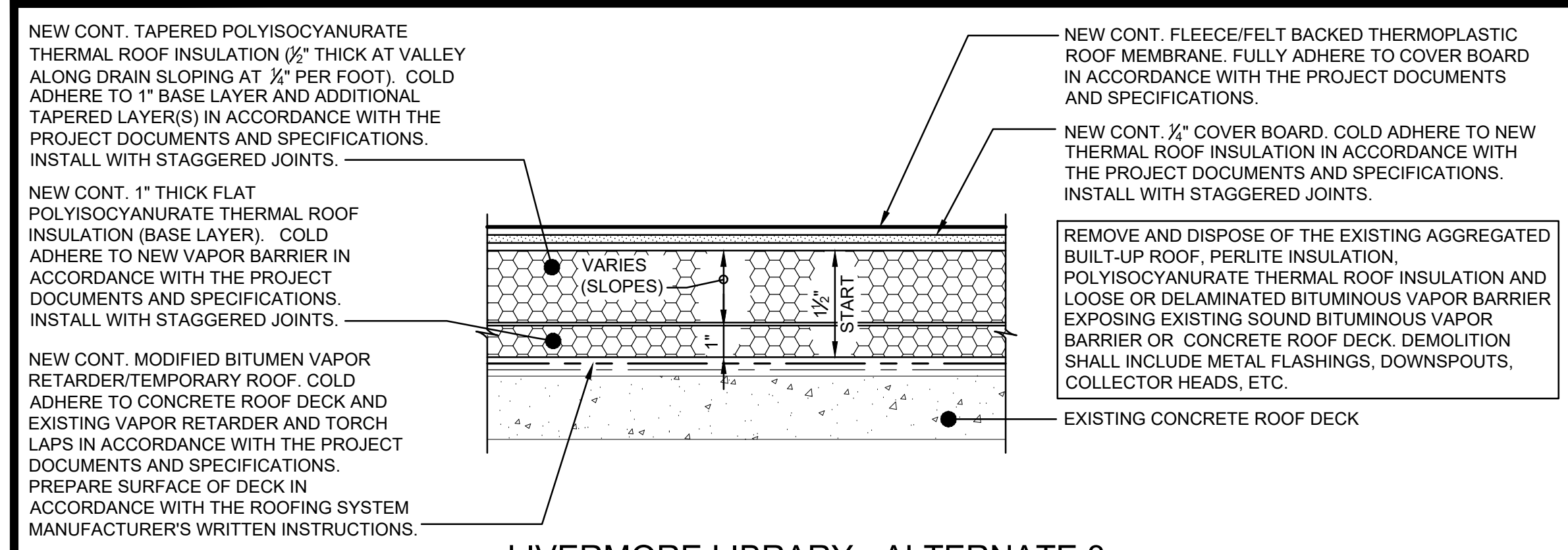






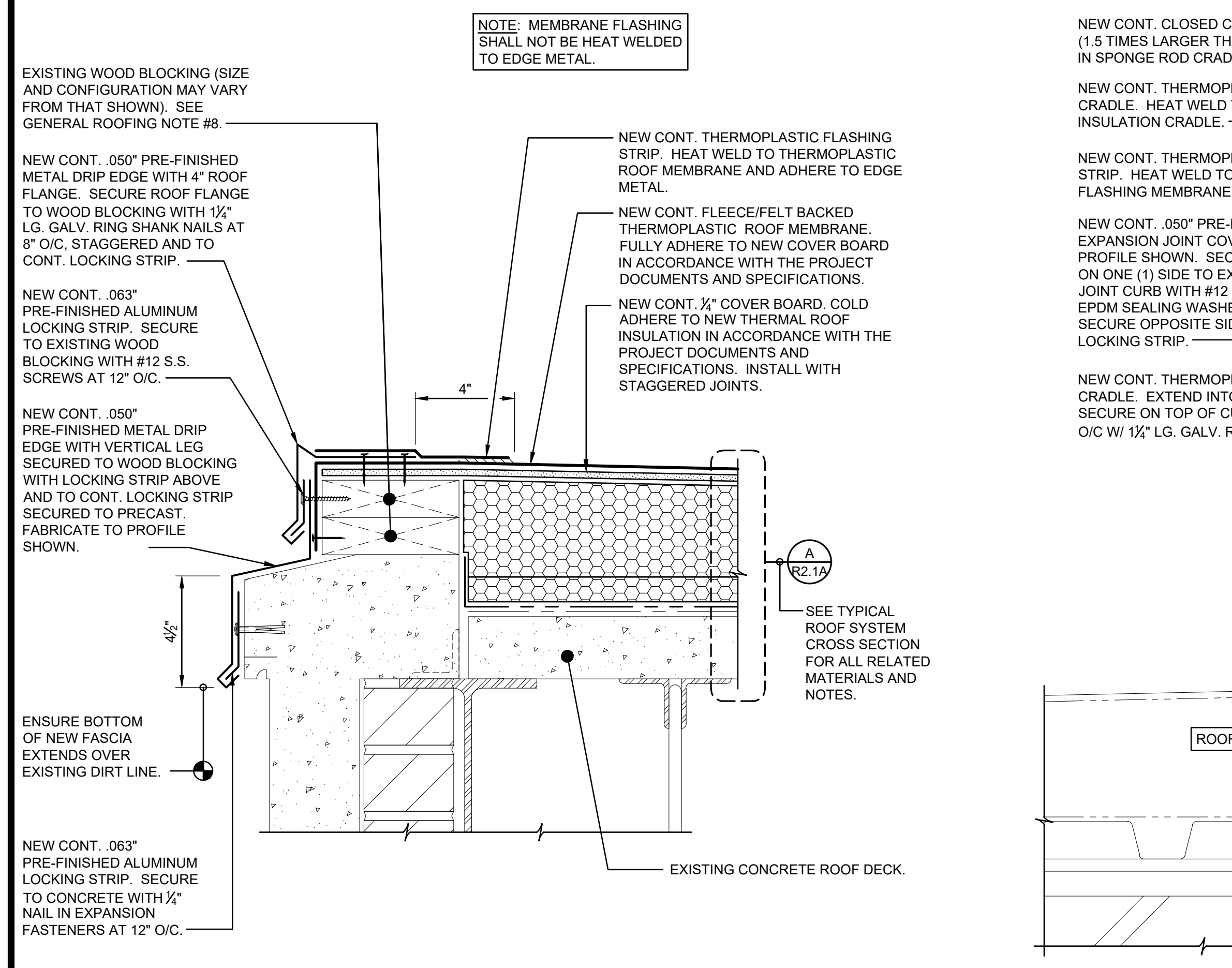






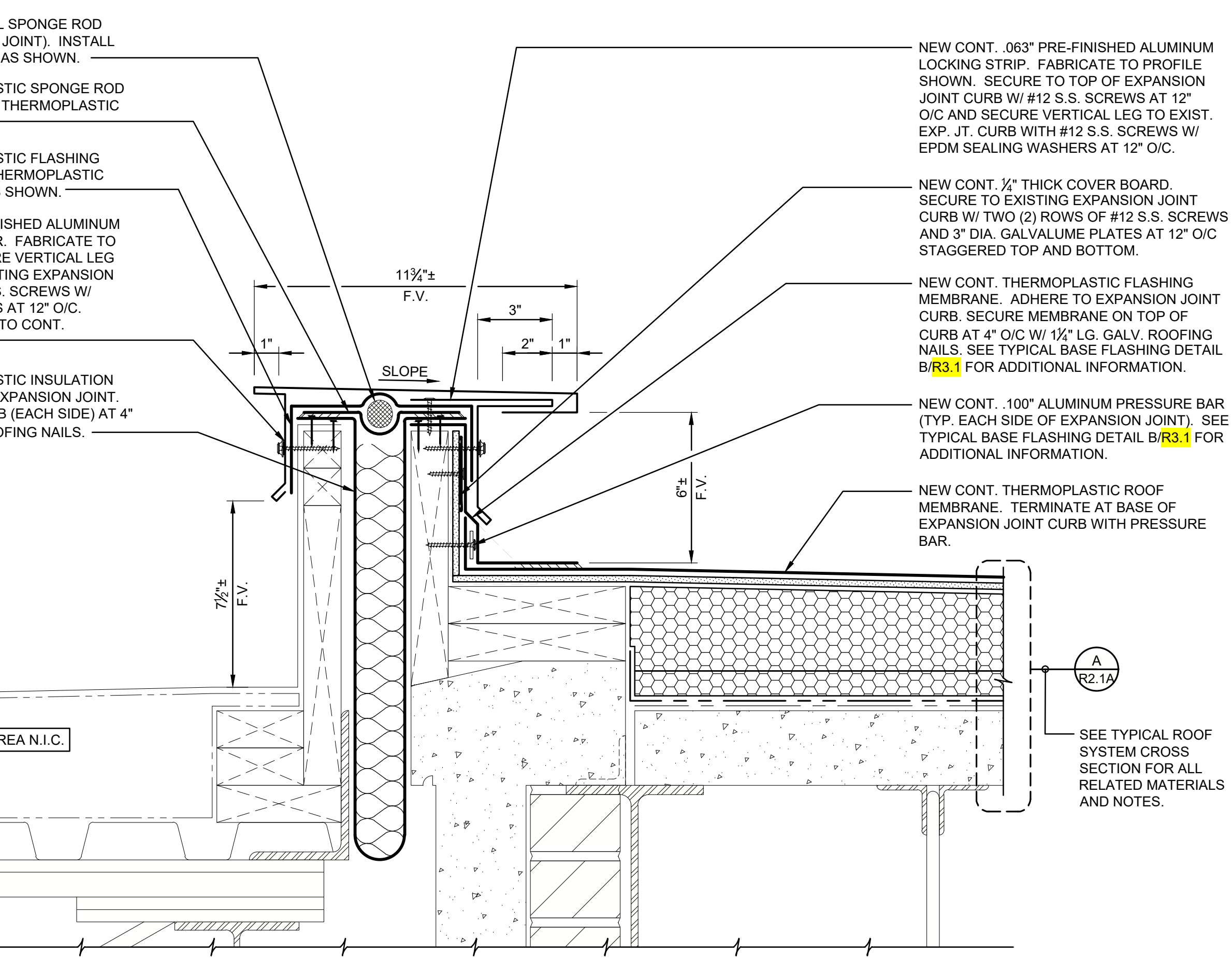
**LIVERMORE LIBRARY - ALTERNATE 3  
ROOF AREA**

**A TYPICAL ROOF SYSTEM CROSS SECTION**  
R2.1A 3" = 1'-0"  
Dwg # 220476-R6010.DWG



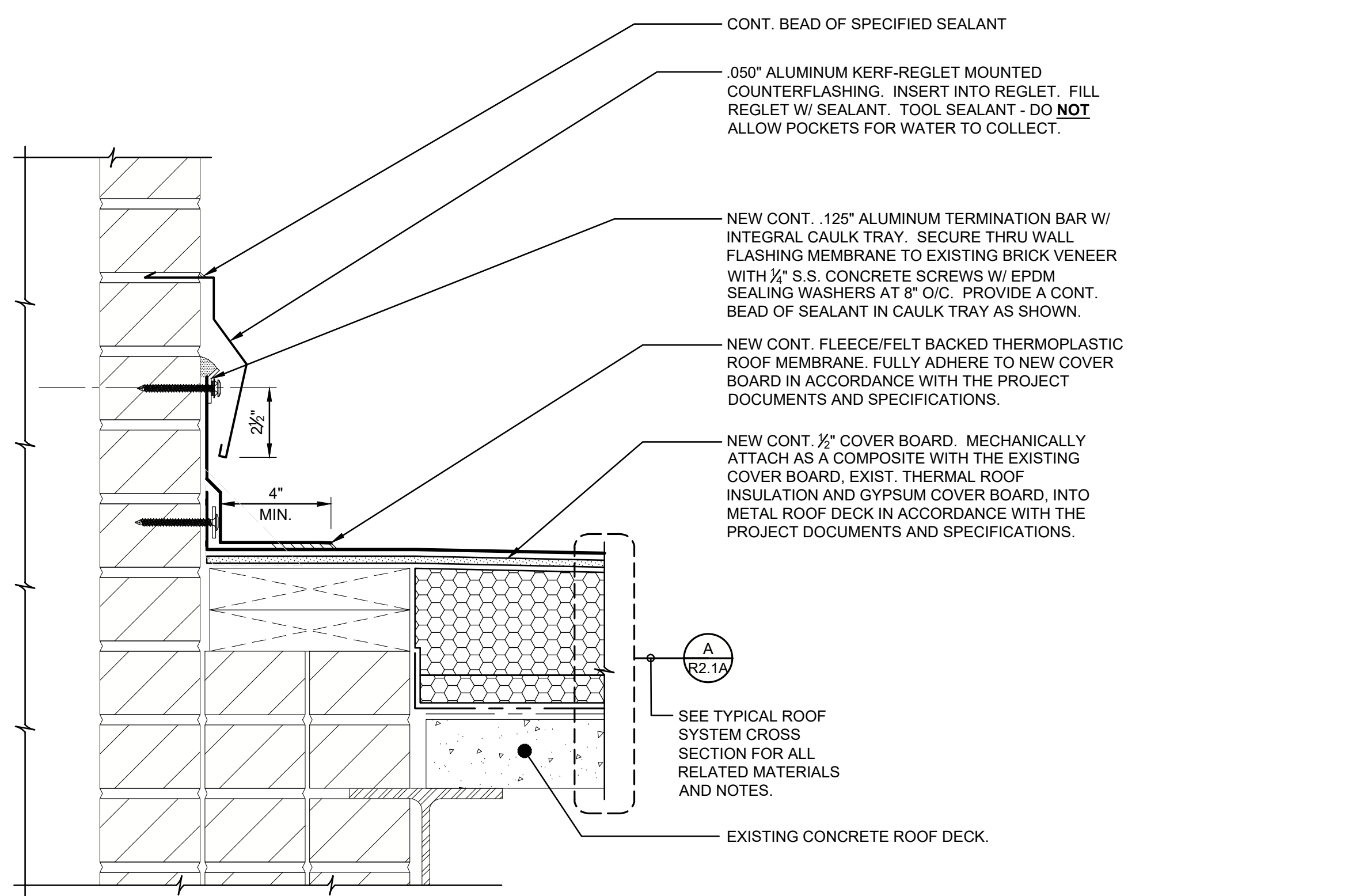
**1 ROOF EDGE - SECTION  
LIVERMORE LIBRARY ROOF AREA (ALTERNATE 3)**

R2.1A 3" = 1'-0"  
Dwg # 220476-R6009.DWG



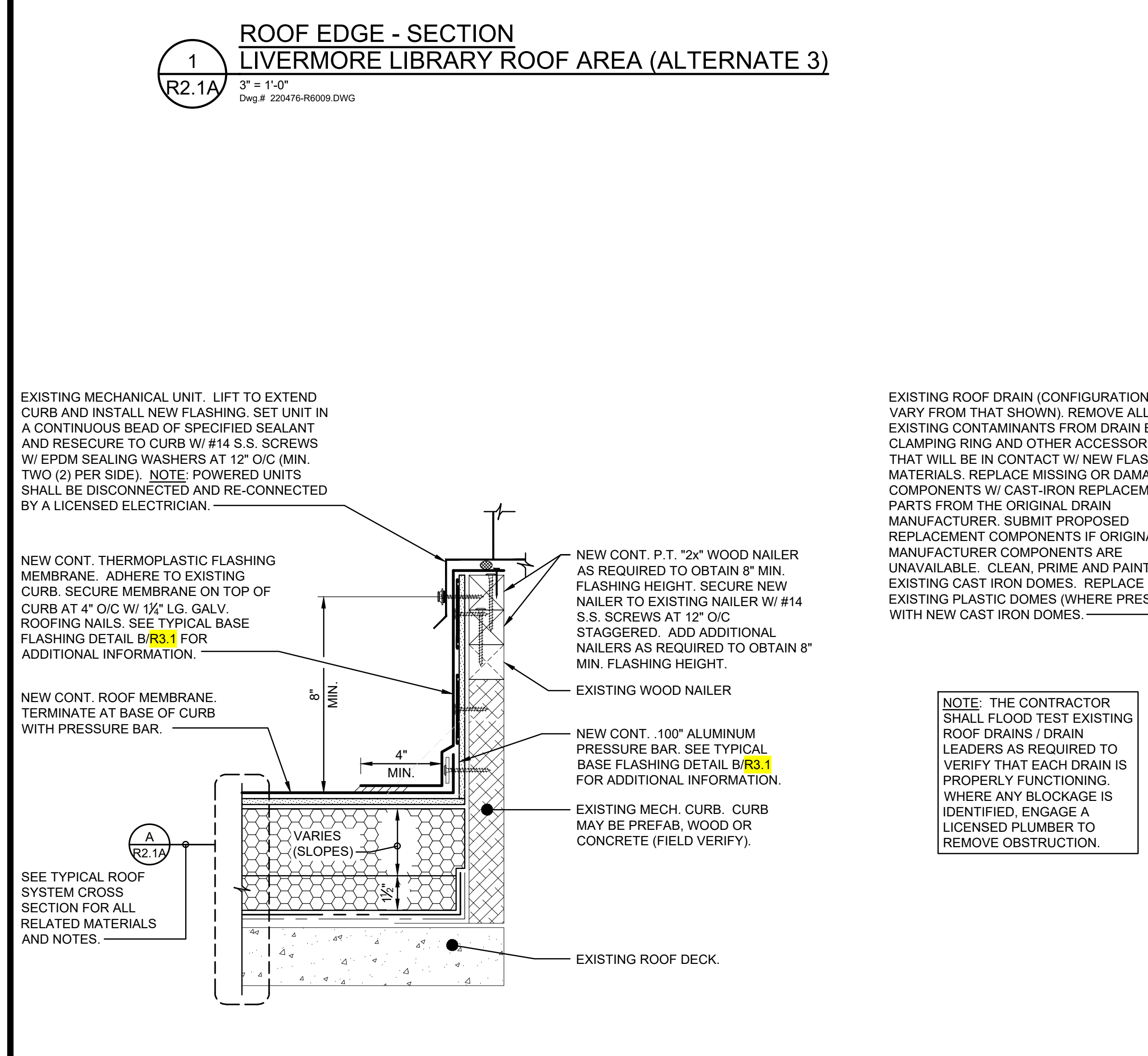
**2 BUILDING EXPANSION JOINT  
LIVERMORE LIBRARY ROOF AREA (ALTERNATE 3)**

R2.1A 3" = 1'-0"  
Dwg # 220476-R6007.DWG



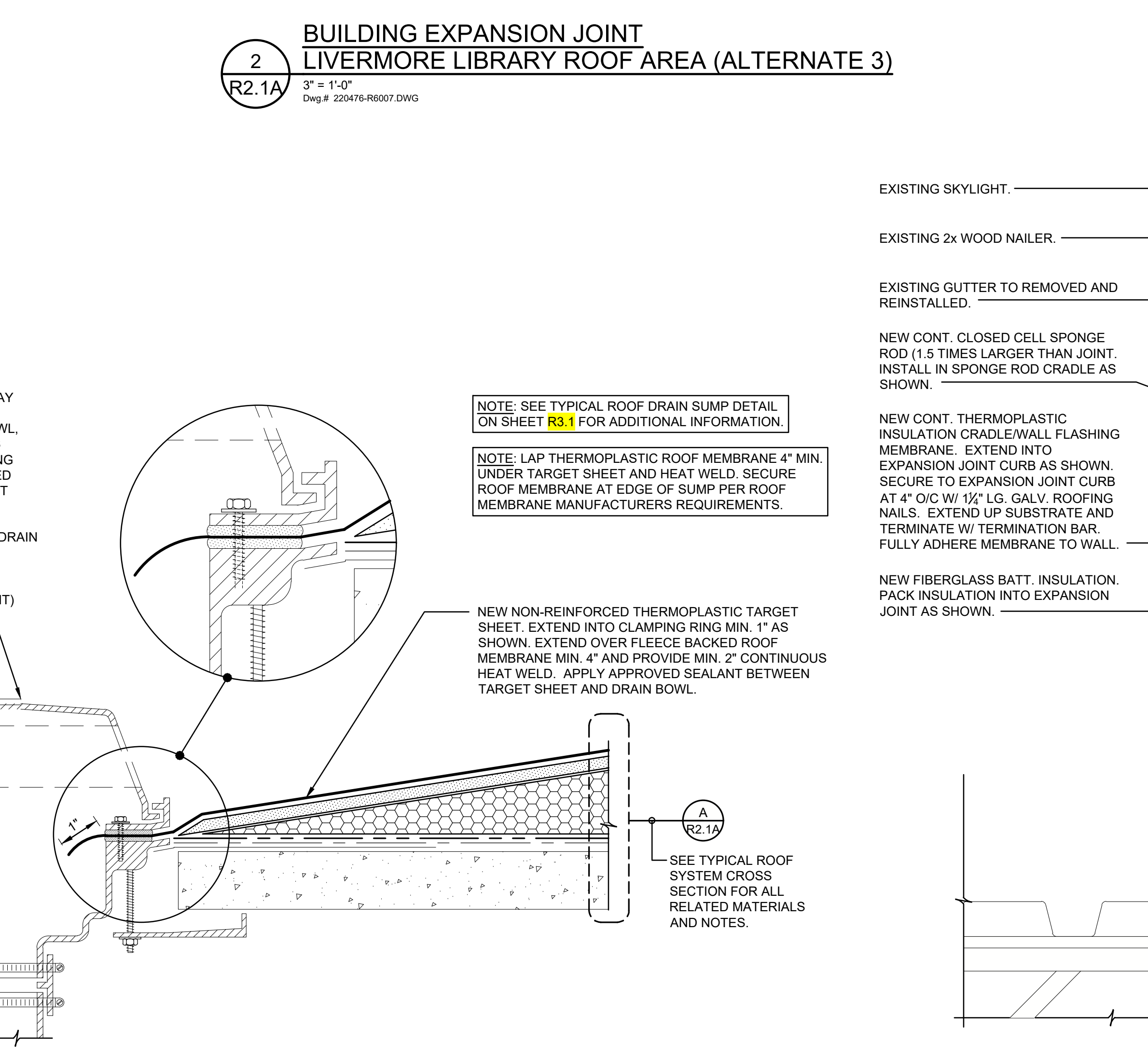
**3 BASE FLASHING AT CHIMNEY - SECTION  
LIVERMORE LIBRARY ROOF AREA (ALTERNATE 3)**

R2.1A 3" = 1'-0"  
Dwg # 220476-R6008.DWG



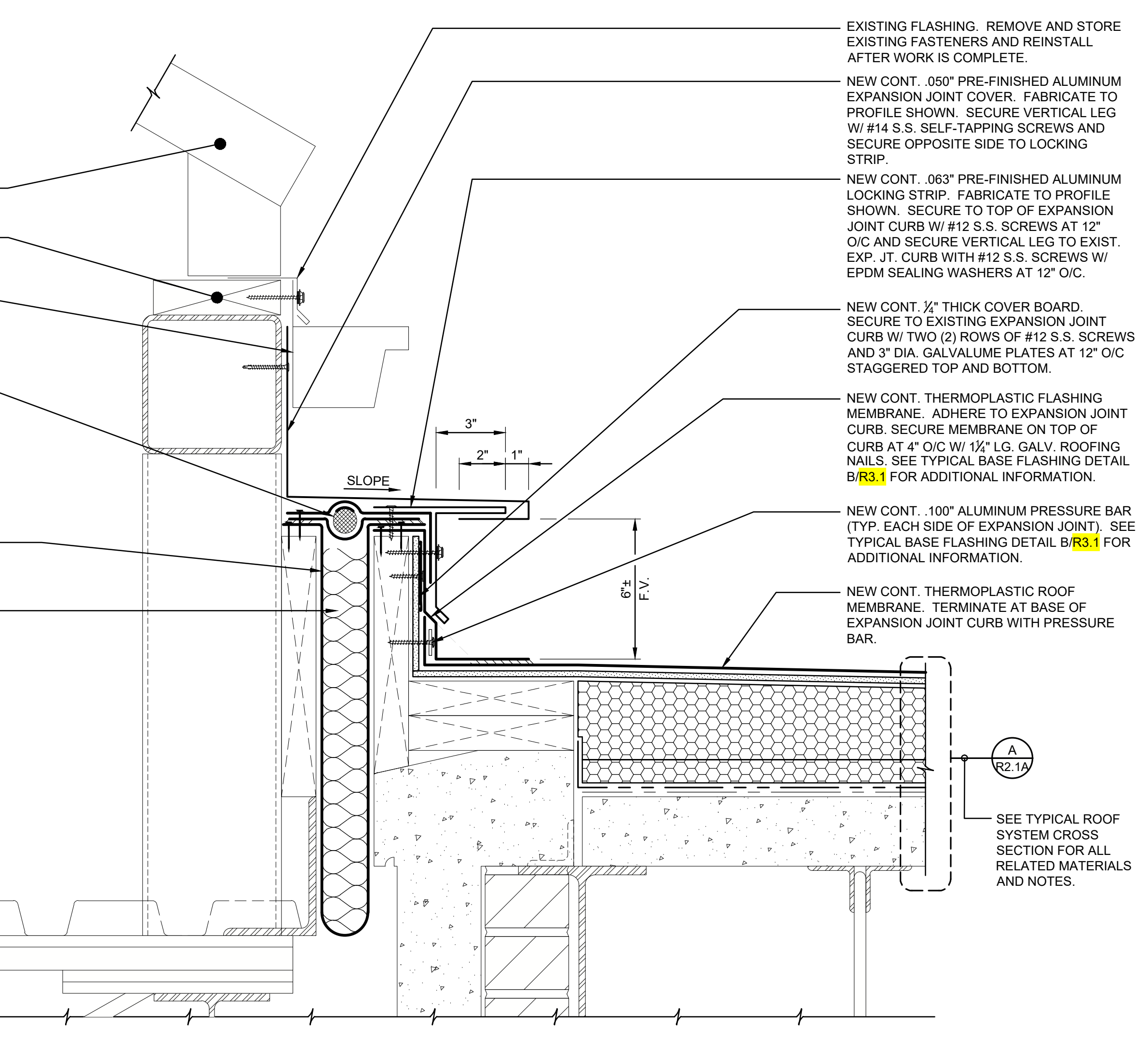
**4 SECTION - ROOF CURB / MECHANICAL UNIT  
LIVERMORE LIBRARY ROOF AREA (ALTERNATE 3)**

R2.1A 3" = 1'-0"  
Dwg # 220476-R6037.DWG



**5 SECTION - EXISTING ROOF DRAIN  
LIVERMORE LIBRARY ROOF AREA (ALTERNATE 3)**

R2.1A 3" = 1'-0"  
Dwg # 220476-R6038.DWG



**6 BUILDING EXPANSION JOINT AT SKYLIGHT  
LIVERMORE LIBRARY ROOF AREA (ALTERNATE 3)**

R2.1A 3" = 1'-0"  
Dwg # 220476-R6040.DWG

CONSTRUCTION DOCUMENTS: BID SET

UNC PEMBROKE - OXENIDE SCIENCE BUILDING AND LIVERMORE LIBRARY  
UNIVERSITY DRIVE  
PEMBROKE, NORTH CAROLINA 28372

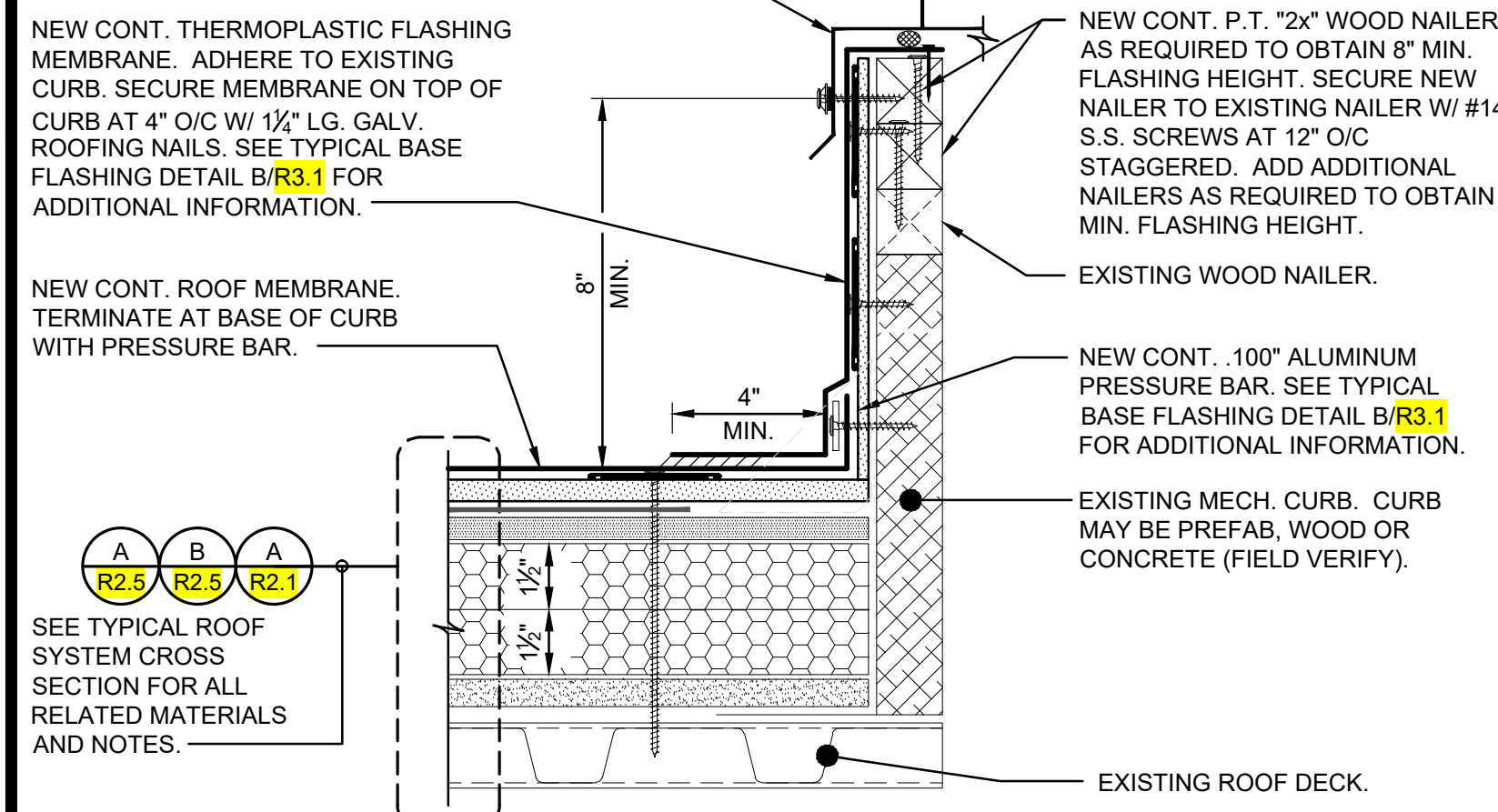
LIVERMORE LIBRARY (ALTERNATE 3) - SECTIONS AND DETAILS

Designed By: RMT  
Drawn By: DQS  
Checked By: RMT  
Date: 04-22-2024

**R2.1A**



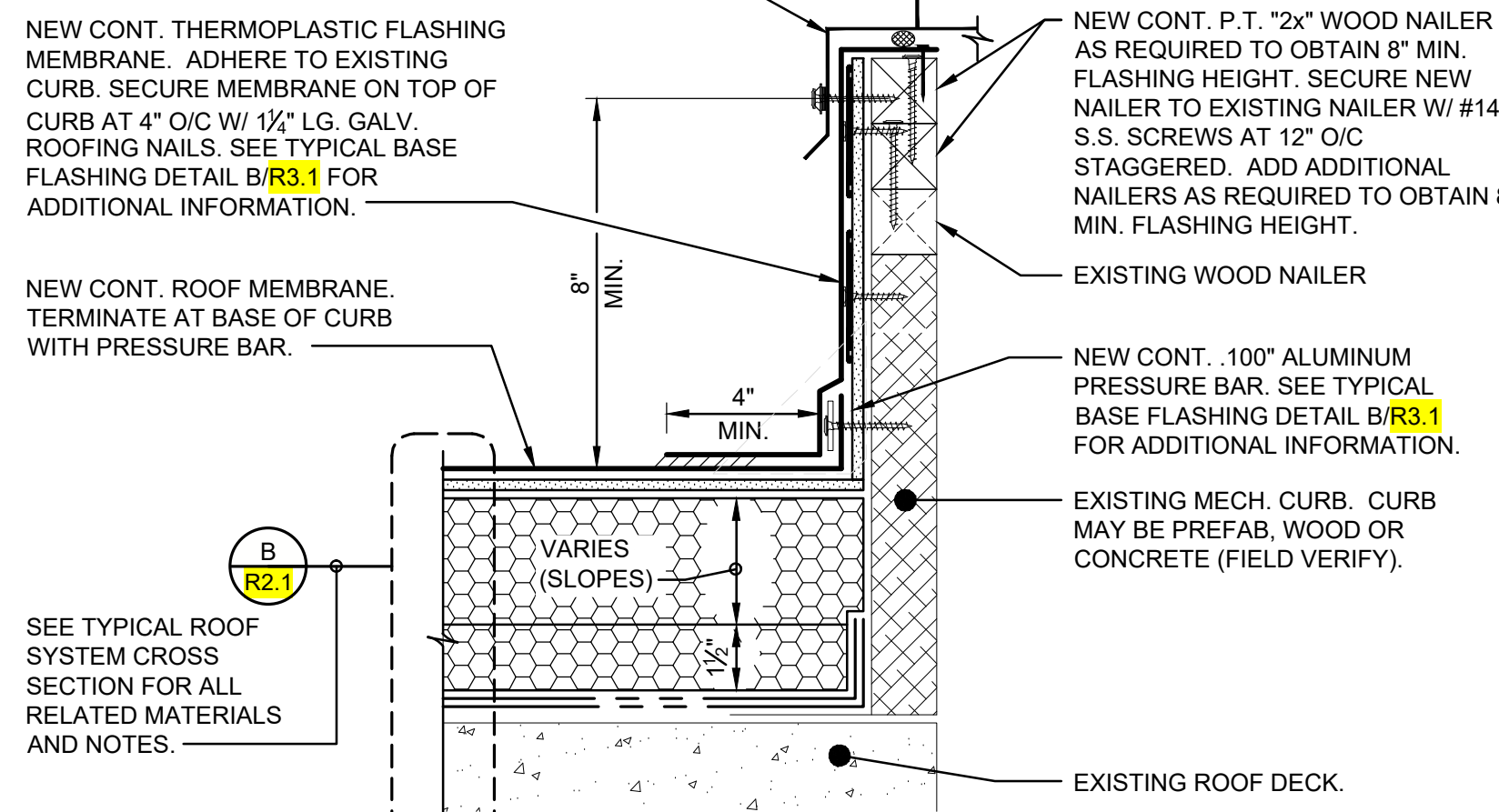
EXISTING MECHANICAL UNIT. LIFT TO EXTEND CURB AND INSTALL NEW FLASHING. SET UNIT IN A CONTINUOUS BEAD OF SPECIFIED SEALANT AND RESECURE TO CURB W/ #14 S.S. SCREWS W/ EPDM SEALING WASHERS AT 12" O/C (MIN. TWO (2) PER SIDE). NOTE: POWERED UNITS SHALL BE DISCONNECTED AND RE-CONNECTED BY A LICENSED ELECTRICIAN.



NOTE: THIS DETAIL APPLIES TO ALL ROOF AREAS EXCLUDING ROOF AREA '4'. SEE 2/R2.2.

1 SECTION - ROOF CURB / MECHANICAL UNIT  
OXENDINE SCIENCE BUILDING ROOF AREAS  
R2.2 3" = 1'-0"  
Dwg.# 220476-R6033.DWG

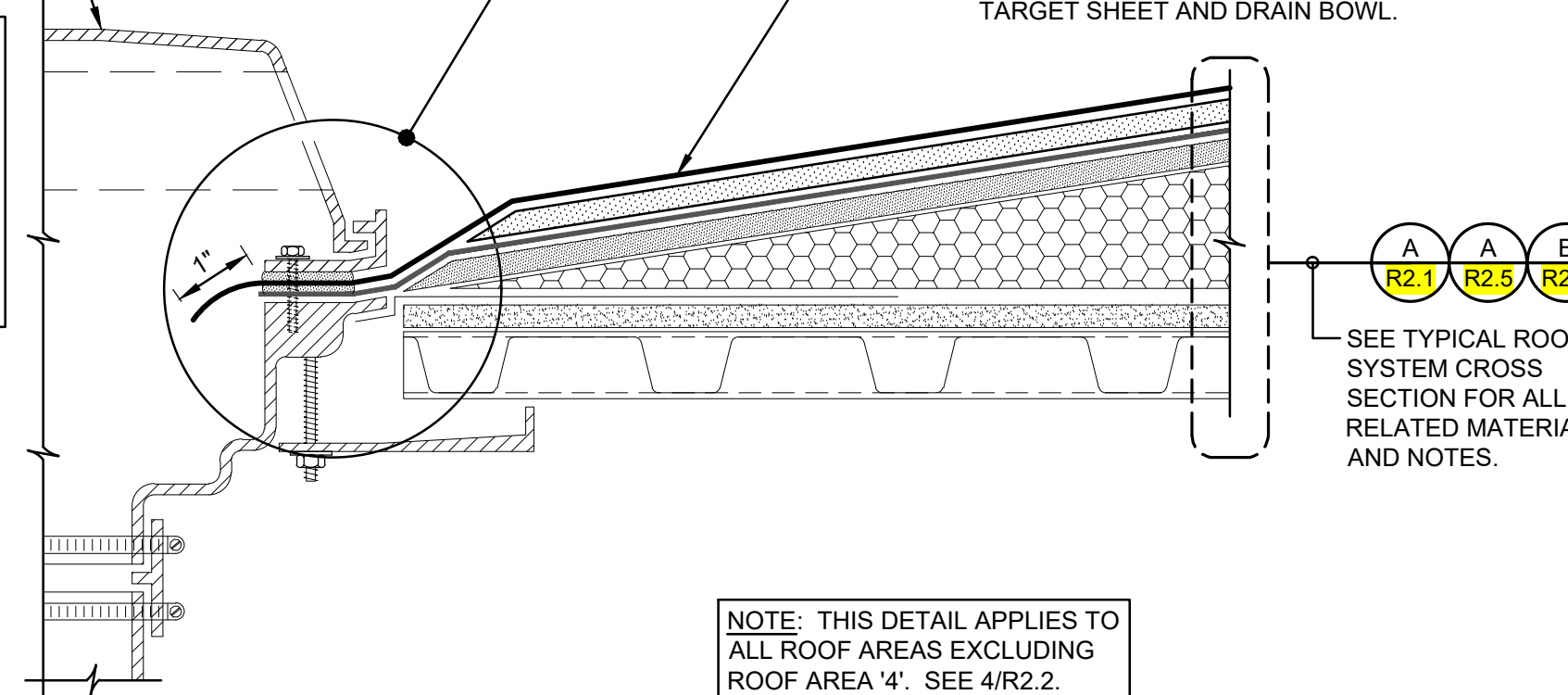
EXISTING MECHANICAL UNIT. LIFT TO EXTEND CURB AND INSTALL NEW FLASHING. SET UNIT IN A CONTINUOUS BEAD OF SPECIFIED SEALANT AND RESECURE TO CURB W/ #14 S.S. SCREWS W/ EPDM SEALING WASHERS AT 12" O/C (MIN. TWO (2) PER SIDE). NOTE: POWERED UNITS SHALL BE DISCONNECTED AND RE-CONNECTED BY A LICENSED ELECTRICIAN.



SEE TYPICAL ROOF SYSTEM CROSS SECTION FOR ALL RELATED MATERIALS AND NOTES.

2 SECTION - ROOF CURB / MECHANICAL UNIT  
OXENDINE SCIENCE BUILDING - ROOF AREA '4'  
R2.2 3" = 1'-0"  
Dwg.# 220476-R6035.DWG

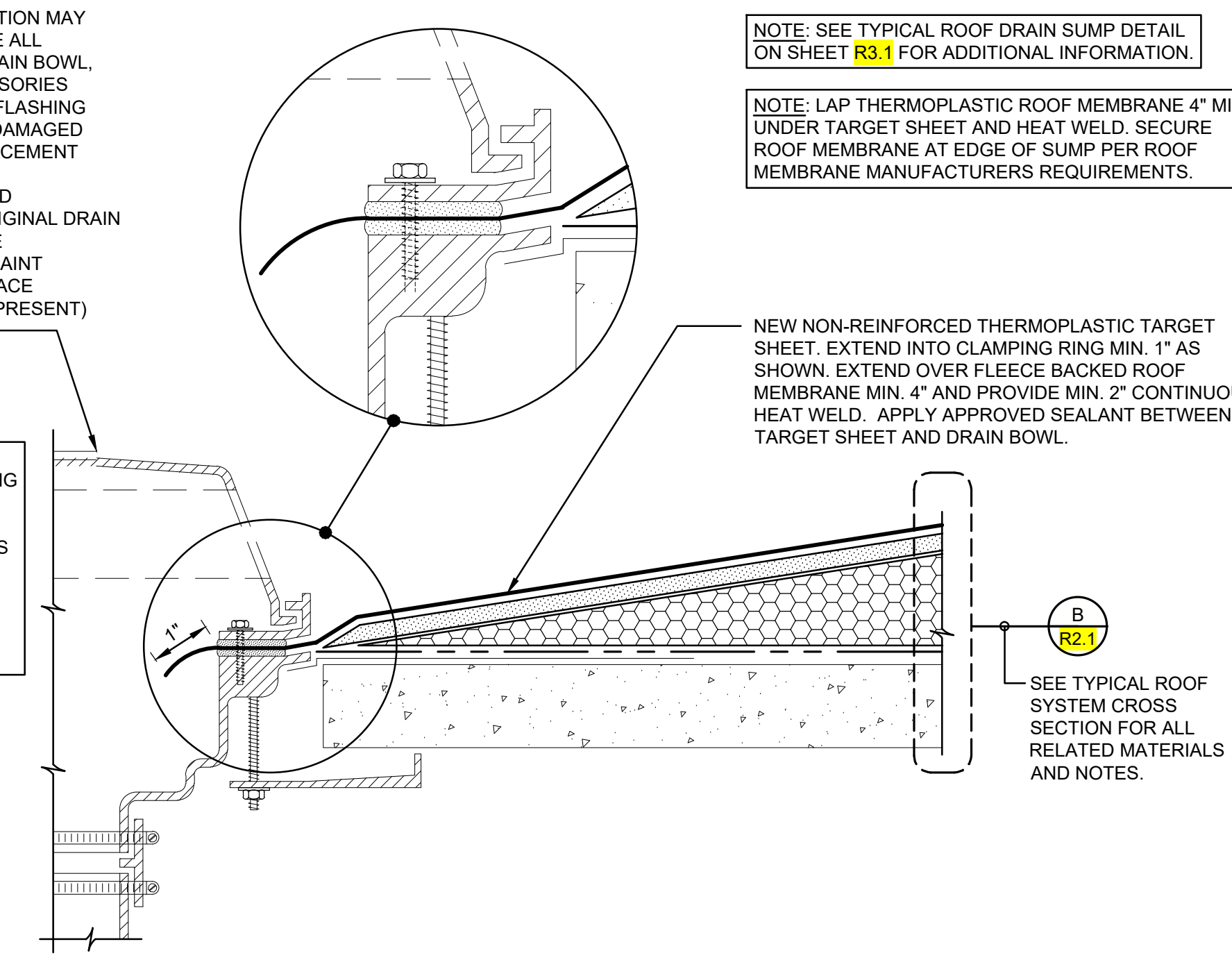
EXISTING ROOF DRAIN (CONFIGURATION MAY VARY FROM THAT SHOWN). REMOVE ALL EXISTING CONTAMINANTS FROM DRAIN BOWL, CLAMPING RING AND OTHER ACCESSORIES THAT WILL BE IN CONTACT W/ NEW FLASHING MATERIALS. REPLACE MISSING OR DAMAGED COMPONENTS W/ CAST IRON REPLACEMENT PARTS FROM THE ORIGINAL DRAIN MANUFACTURER. SUBMIT PROPOSED REPLACEMENT COMPONENTS IF ORIGINAL DRAIN MANUFACTURER COMPONENTS ARE UNAVAILABLE. CLEAN, PRIME AND PAINT EXISTING CAST IRON DOMES. REPLACE EXISTING PLASTIC DOMES (WHERE PRESENT) WITH NEW CAST IRON DOMES.



NOTE: THIS DETAIL APPLIES TO ALL ROOF AREAS EXCLUDING ROOF AREA '4'. SEE 4/R2.2.

3 SECTION - EXISTING ROOF DRAIN  
OXENDINE SCIENCE BUILDING ROOF AREAS  
R2.2 3" = 1'-0"  
Dwg.# 220476-R6034.DWG

EXISTING ROOF DRAIN (CONFIGURATION MAY VARY FROM THAT SHOWN). REMOVE ALL EXISTING CONTAMINANTS FROM DRAIN BOWL, CLAMPING RING AND OTHER ACCESSORIES THAT WILL BE IN CONTACT W/ NEW FLASHING MATERIALS. REPLACE MISSING OR DAMAGED COMPONENTS W/ CAST IRON REPLACEMENT PARTS FROM THE ORIGINAL DRAIN MANUFACTURER. SUBMIT PROPOSED REPLACEMENT COMPONENTS IF ORIGINAL DRAIN MANUFACTURER COMPONENTS ARE UNAVAILABLE. CLEAN, PRIME AND PAINT EXISTING CAST IRON DOMES. REPLACE EXISTING PLASTIC DOMES (WHERE PRESENT) WITH NEW CAST IRON DOMES.



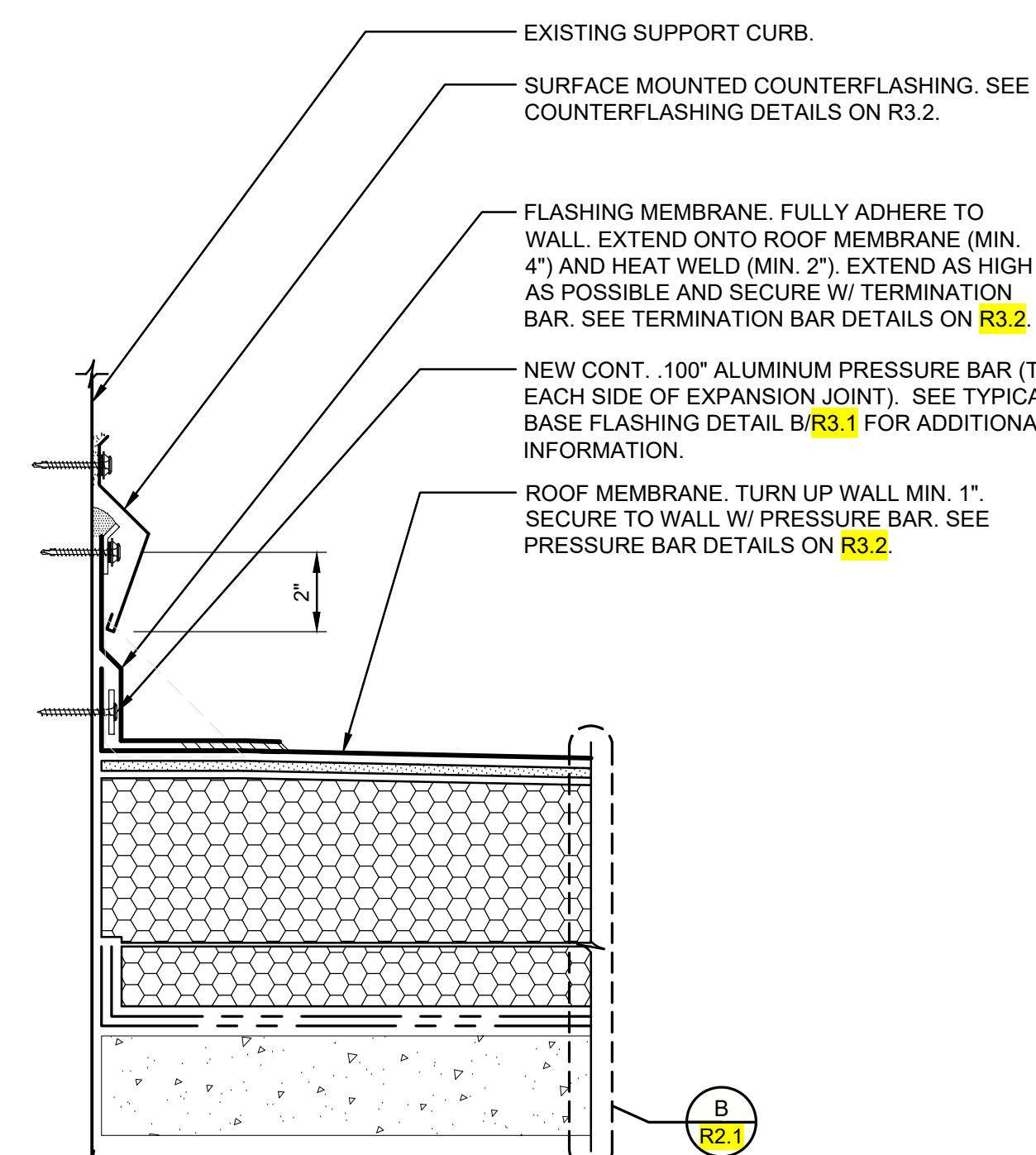
NOTE: SEE TYPICAL ROOF DRAIN SUMP DETAIL ON SHEET R3.1 FOR ADDITIONAL INFORMATION.

NOTE: LAP THERMOPLASTIC ROOF MEMBRANE 4" MIN. UNDER TARGET SHEET AND HEAT WELD. SECURE ROOF MEMBRANE AT EDGE OF SUMP PER ROOF MEMBRANE MANUFACTURERS REQUIREMENTS.

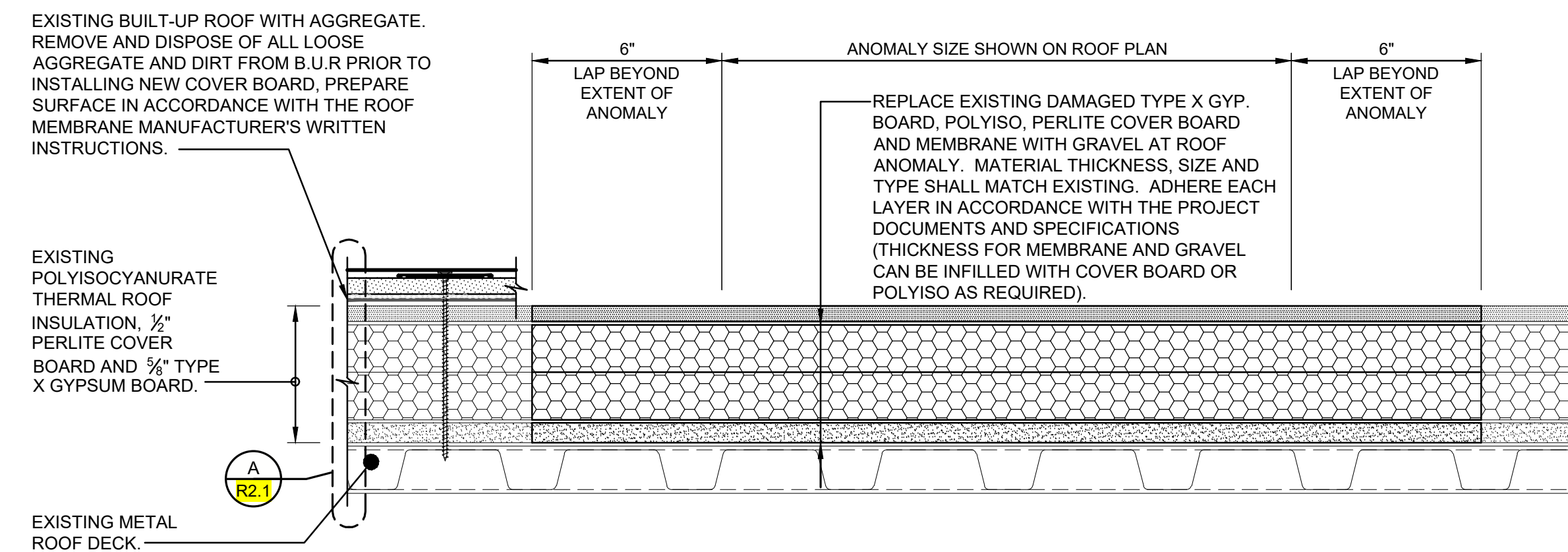
NEW NON-REINFORCED THERMOPLASTIC TARGET SHEET. EXTEND INTO CLAMPING RING MIN. 1" AS SHOWN. EXTEND OVER FLEECE BACKED ROOF MEMBRANE MIN. 4" AND PROVIDE MIN. 2" CONTINUOUS HEAT WELD. APPLY APPROVED SEALANT BETWEEN TARGET SHEET AND DRAIN BOWL.

SEE TYPICAL ROOF SYSTEM CROSS SECTION FOR ALL RELATED MATERIALS AND NOTES.

4 SECTION - EXISTING ROOF DRAIN  
OXENDINE SCIENCE BUILDING - ROOF AREA '4'  
R2.2 3" = 1'-0"  
Dwg.# 220476-R6036.DWG



5 PRE-FABRICATED EQUIPMENT RAIL / SLEEPER CURB  
OXENDINE SCIENCE BUILDING - ROOF AREA '4'  
R2.2 3" = 1'-0"  
Dwg.# 220476-R6039.DWG



6 TYPICAL ROOF ANOMALY REPAIR DETAIL  
R2.2 3" = 1'-0"  
Dwg.# 220476-R6030.DWG

Revision	Date	Mark

UNC PEMBROKE - OXENDINE SCIENCE BUILDING AND LIVERMORE LIBRARY  
UNIVERSITY DRIVE  
SC0 ID: 22-24804-02A  
FENBERGKE, NORTH CAROLINA 28372

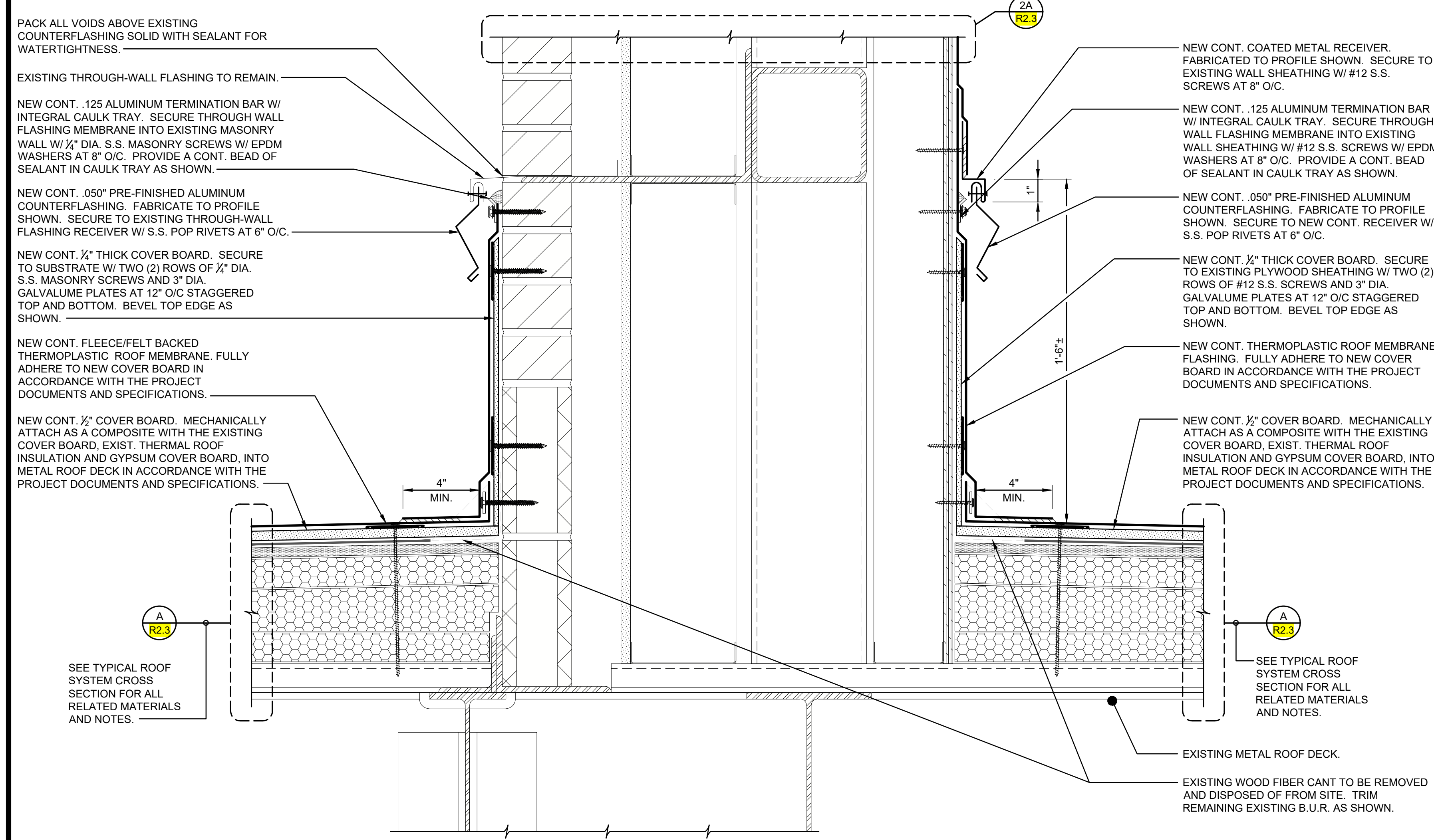
OXENDINE SCIENCE BUILDING - SECTIONS AND DETAILS -  
(ROOF AREAS '2' THRU '10')

Designed By: RMT  
Drawn By: DQS  
Checked By: RMT  
Date: 04-22-2024

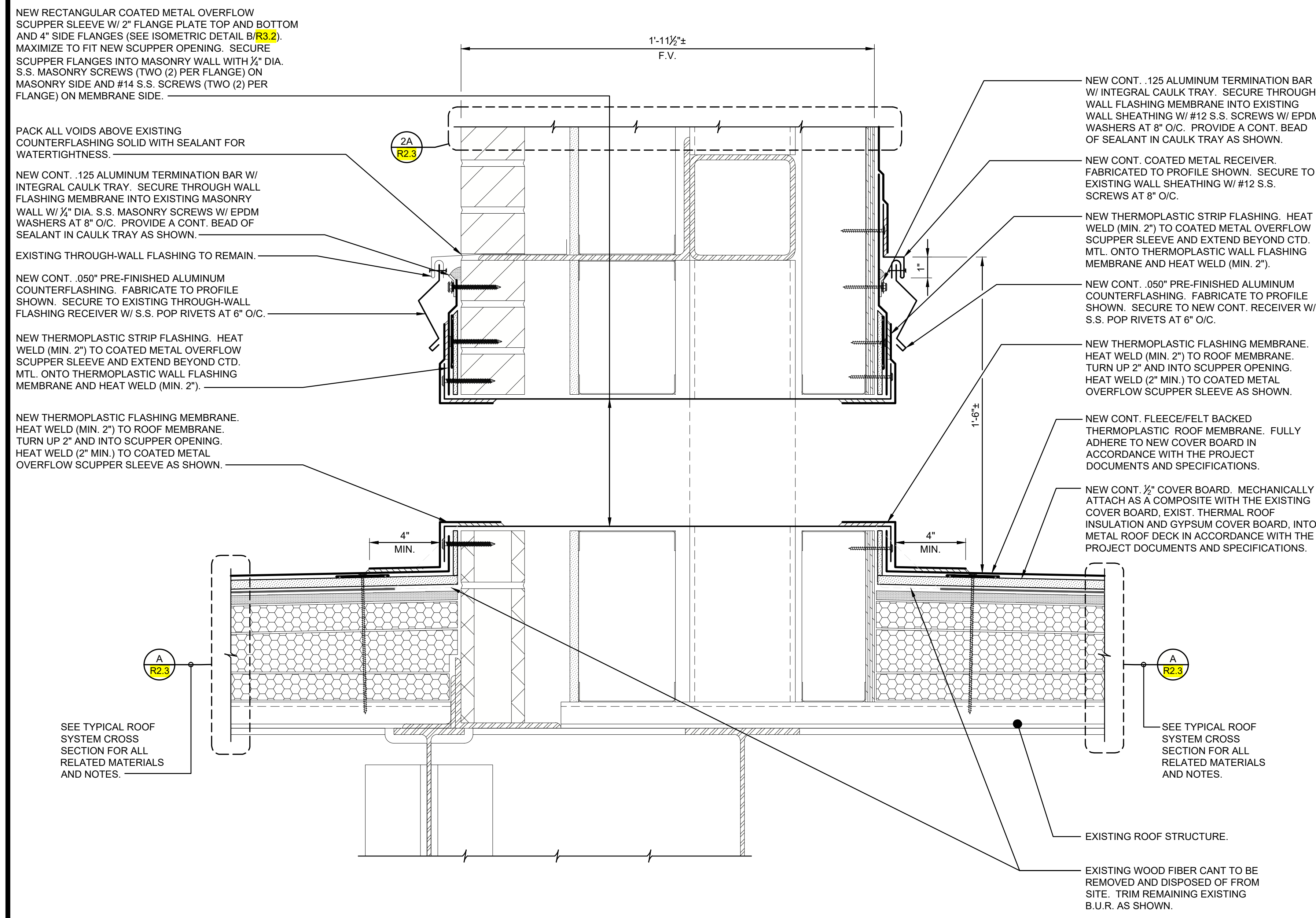




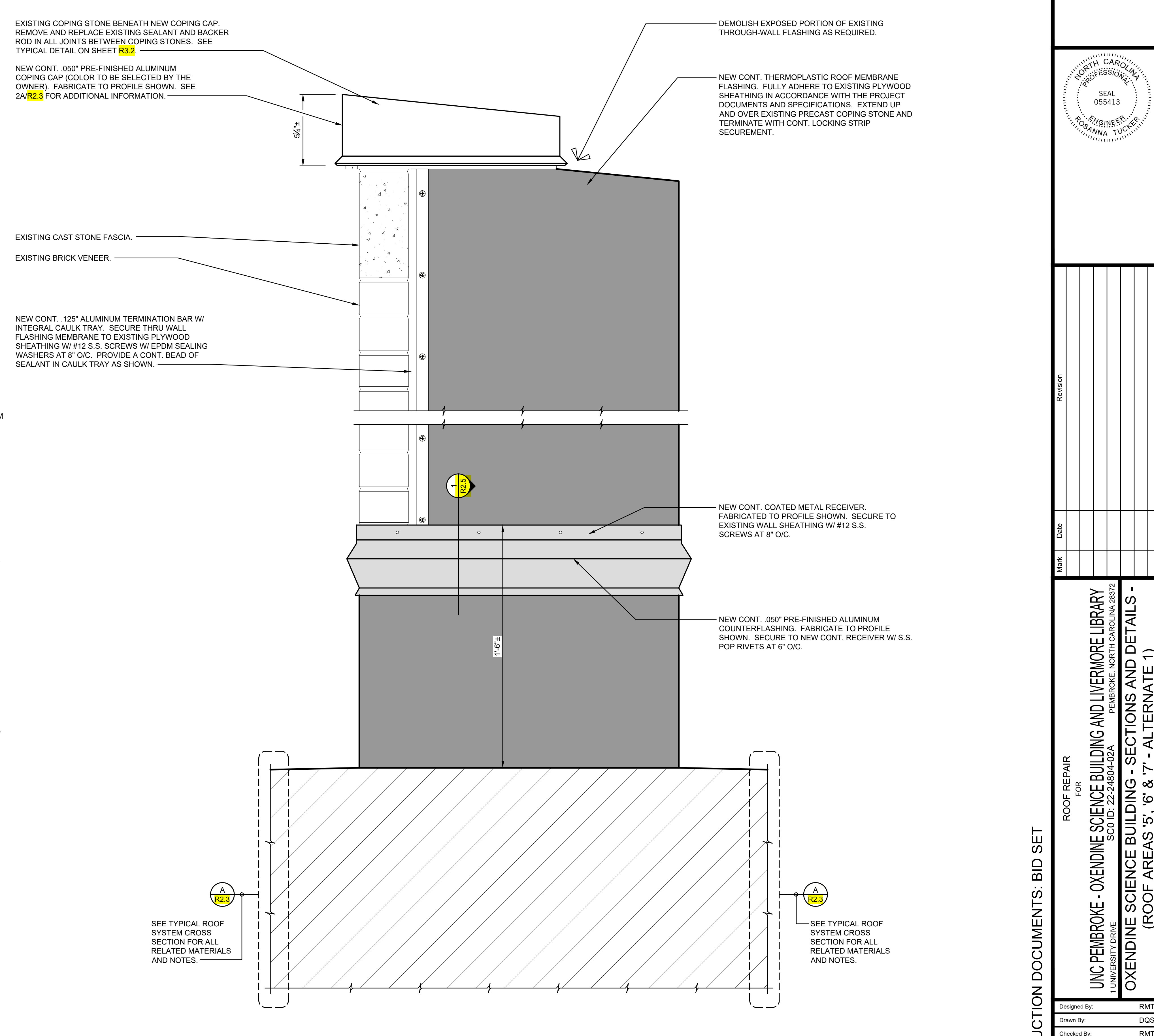




**1**  
**R2.4**  
PARAPET WALL - SECTION  
OXENDINE SCIENCE BUILDING - ROOF AREA '5', '6' AND '7' (ALTERNATE 1)  
3" = 1'-0"  
Dwg # 220476-R6032.DWG



**2**  
**R2.4**  
NEW PARAPET WALL SCUPPER - SECTION  
OXENDINE SCIENCE BUILDING - ROOF AREA '5', '6' AND '7' (ALTERNATE 1)  
3" = 1'-0"  
Dwg # 220476-R6032.DWG



**3**  
**R2.4**  
EXTERIOR PARAPET WALL - ELEVATION  
OXENDINE SCIENCE BUILDING - ROOF AREA '5', '6' AND '7' (ALTERNATE 1)  
3" = 1'-0"  
Dwg # 220476-R6032.DWG

CONSTRUCTION DOCUMENTS: BID SET

ROOF REPAIR FOR  
UNC PEMBROKE - OXENDINE SCIENCE BUILDING AND LIVERMORE LIBRARY  
UNIVERSITY DRIVE  
SC0 ID: 22-24804-02A  
FENBERKE, NORTH CAROLINA 28772  
OXENDINE SCIENCE BUILDING - SECTIONS AND DETAILS -  
(ROOF AREAS '5', '6' & '7' - ALTERNATE 1)

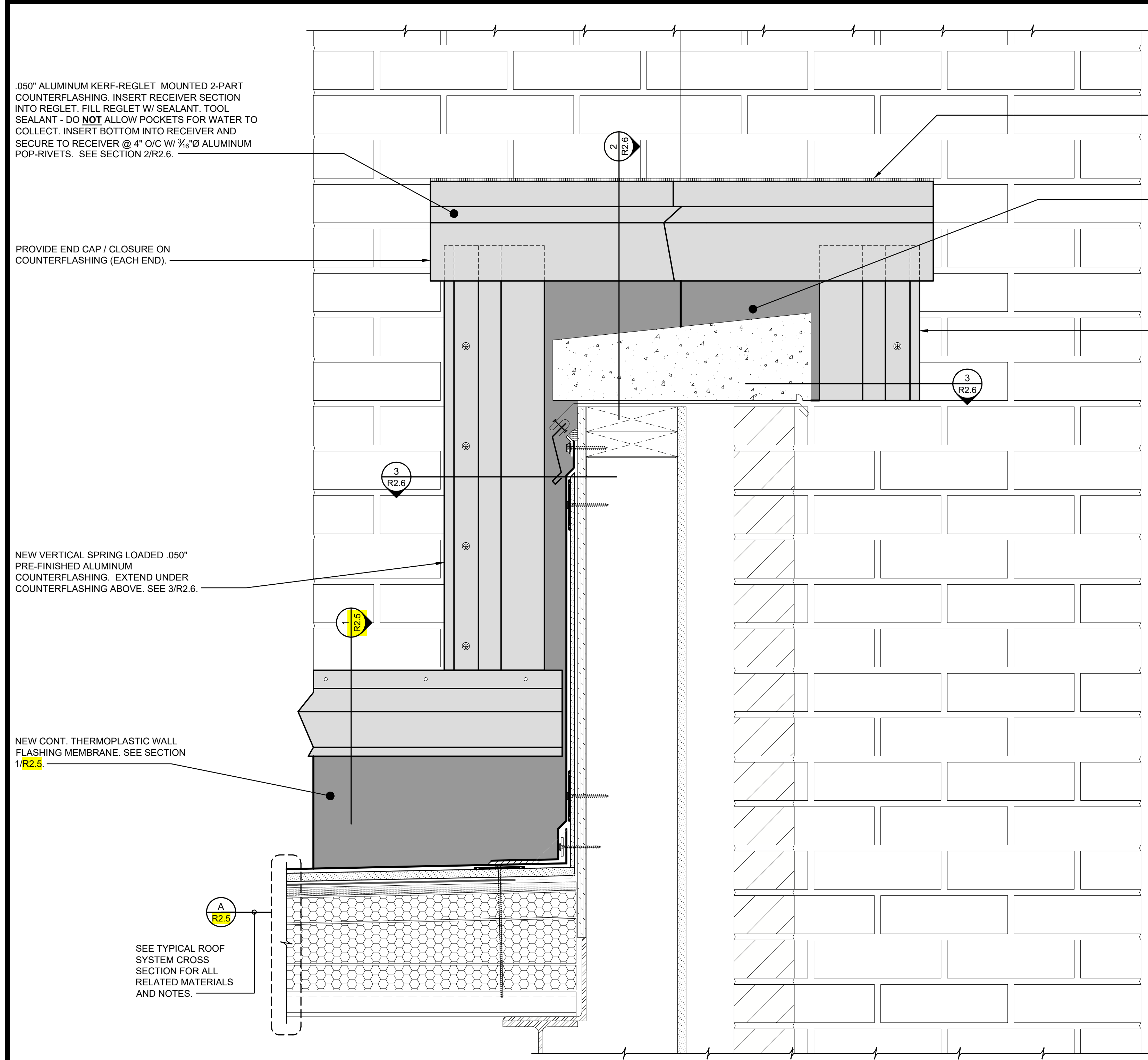
Designed By: RMT  
Drawn By: DQS  
Checked By: RMT  
Date: 04-22-2024

**R2.4**

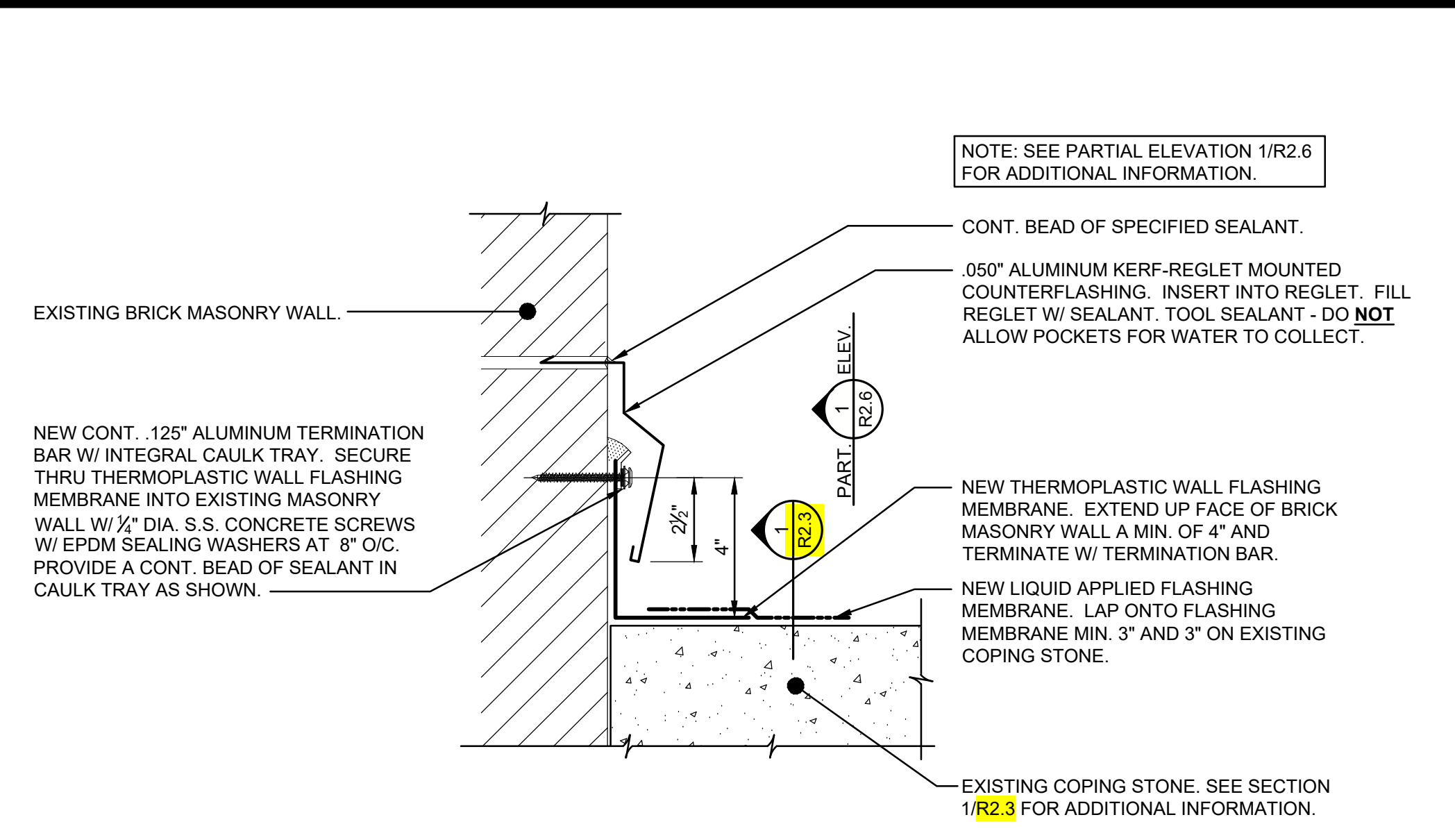




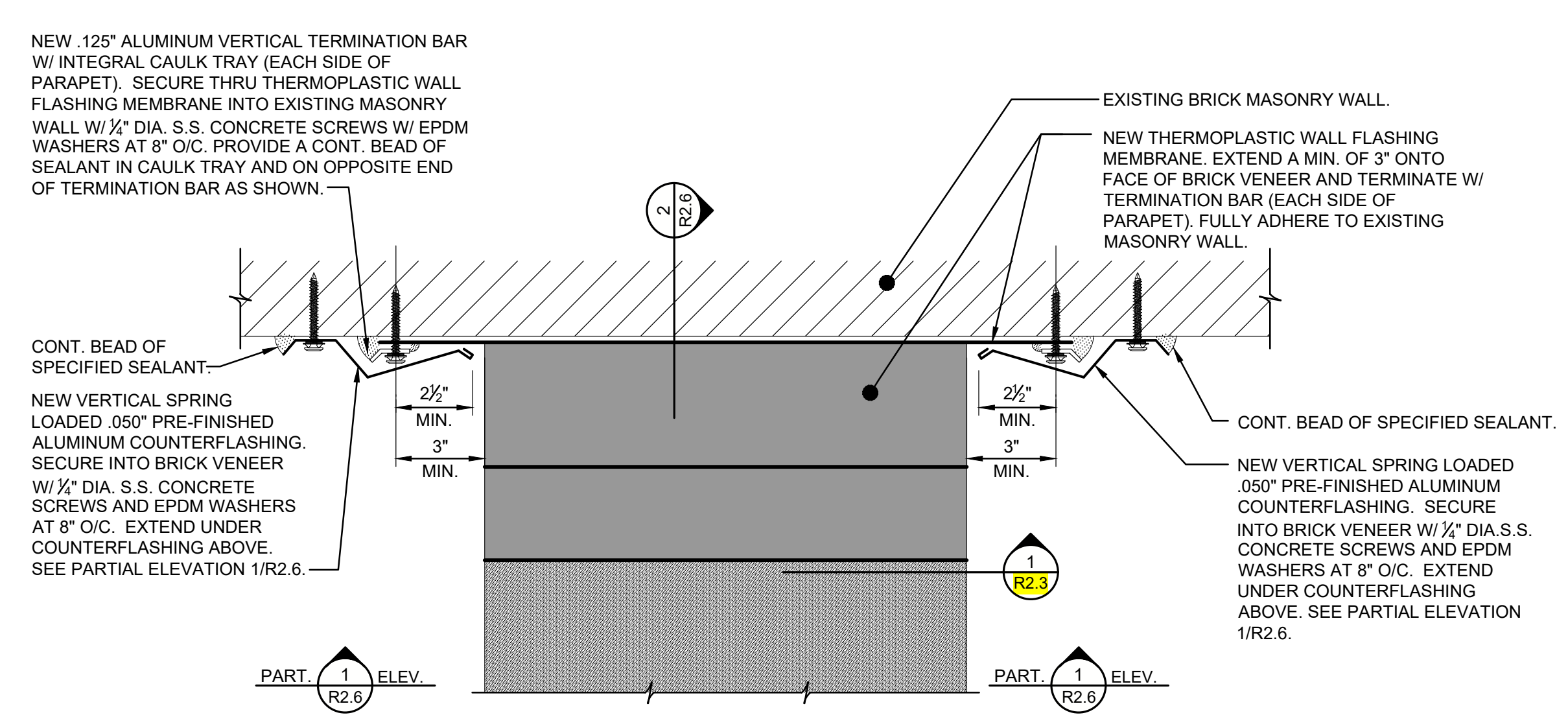




**1**  
PARTIAL ELEVATION - PARAPET COPING TO WALL TRANSITION  
OXENDINE SCIENCE BUILDING - ROOF AREA '8' (ALTERNATE 2)  
R2.6 3" = 1'-0"  
Dwg.# 220476-R0231.DWG



**2**  
PARAPET COPING/FASCIA TO WALL TRANSITION - SECTION  
OXENDINE SCIENCE BUILDING - ROOF AREA '8' (ALTERNATE 2)  
R2.6 3" = 1'-0"  
Dwg.# 220476-R011.DWG



**3**  
PARAPET COPING/FASCIA TO WALL TRANSITION - PLAN DETAIL  
OXENDINE SCIENCE BUILDING - ROOF AREA '8' (ALTERNATE 2)  
R2.6 3" = 1'-0"  
Dwg.# 220476-R011.DWG

.050" ALUMINUM KERF-REGLET MOUNTED 2-PART COUNTERFLASHING. INSERT RECEIVER SECTION INTO REGLET. FILL REGLET W/ SEALANT. TOOL SEALANT - DO NOT ALLOW POCKETS FOR WATER TO COLLECT. INSERT BOTTOM INTO RECEIVER AND SECURE TO RECEIVER @ 4" O/C W/ 3/8" ALUMINUM POP-RIVETS. SEE SECTION 1/R2.6.

PROVIDE END CAP / CLOSURE ON COUNTERFLASHING (EACH END).

NEW VERTICAL SPRING LOADED .050" PRE-FINISHED ALUMINUM COUNTERFLASHING. EXTEND UNDER COUNTERFLASHING ABOVE. SEE 3/R2.6.

NEW CONT. THERMOPLASTIC WALL FLASHING MEMBRANE. SEE SECTION 1/R2.6.

SEE TYPICAL ROOF SYSTEM CROSS SECTION FOR ALL RELATED MATERIALS AND NOTES.

CONT. BEAD OF SPECIFIED SEALANT.

NEW CONT. THERMOPLASTIC WALL FLASHING MEMBRANE. SEE 3/R2.6.

NEW VERTICAL SPRING LOADED .050" PRE-FINISHED ALUMINUM COUNTERFLASHING. EXTEND UNDER COUNTERFLASHING ABOVE. SEE 3/R2.6.

NOTE: SEE PARTIAL ELEVATION 1/R2.6 FOR ADDITIONAL INFORMATION.

CONT. BEAD OF SPECIFIED SEALANT.  
.050" ALUMINUM KERF-REGLET MOUNTED COUNTERFLASHING. INSERT INTO REGLET. FILL REGLET W/ SEALANT. TOOL SEALANT - DO NOT ALLOW POCKETS FOR WATER TO COLLECT.

NEW THERMOPLASTIC WALL FLASHING MEMBRANE. EXTEND UP FACE OF BRICK MASONRY WALL A MIN. OF 4" AND TERMINATE W/ TERMINATION BAR.  
NEW LIQUID APPLIED FLASHING MEMBRANE. LAP ONTO FLASHING MEMBRANE MIN. 3" AND 3" ON EXISTING COPING STONE.

EXISTING COPING STONE. SEE SECTION 1/R2.3 FOR ADDITIONAL INFORMATION.

NEW .125" ALUMINUM VERTICAL TERMINATION BAR W/ INTEGRAL CAULK TRAY (EACH SIDE OF PARAPET). SECURE THRU THERMOPLASTIC WALL FLASHING MEMBRANE INTO EXISTING MASONRY WALL W/ 1/2" DIA. S.S. CONCRETE SCREWS W/ EPDM WASHERS AT 8" O/C. PROVIDE A CONT. BEAD OF SEALANT IN CAULK TRAY AND ON OPPOSITE END OF TERMINATION BAR AS SHOWN.

CONT. BEAD OF SPECIFIED SEALANT.

NEW VERTICAL SPRING LOADED .050" PRE-FINISHED ALUMINUM COUNTERFLASHING. SECURE INTO BRICK VENEER W/ 1/2" DIA. S.S. CONCRETE SCREWS AND EPDM WASHERS AT 8" O/C. EXTEND UNDER COUNTERFLASHING ABOVE. SEE PARTIAL ELEVATION 1/R2.6.

EXISTING BRICK MASONRY WALL.  
NEW THERMOPLASTIC WALL FLASHING MEMBRANE. EXTEND A MIN. OF 3" ONTO FACE OF BRICK VENEER AND TERMINATE W/ TERMINATION BAR (EACH SIDE OF PARAPET). FULLY ADHERE TO EXISTING MASONRY WALL.

CONT. BEAD OF SPECIFIED SEALANT.  
NEW VERTICAL SPRING LOADED .050" PRE-FINISHED ALUMINUM COUNTERFLASHING. SECURE INTO BRICK VENEER W/ 1/2" DIA. S.S. CONCRETE SCREWS AND EPDM WASHERS AT 8" O/C. EXTEND UNDER COUNTERFLASHING ABOVE. SEE PARTIAL ELEVATION 1/R2.6.

NOTE: SEE PARTIAL ELEVATION 1/R2.6 FOR ADDITIONAL INFORMATION.

Revision	Date	Mark

UNC PEMBERKE - OXENDINE SCIENCE BUILDING AND LIVERMORE LIBRARY  
UNIVERSITY DRIVE  
SCO ID: 22-24804-02A  
FENBERKE, NORTH CAROLINA 28772  
OXENDINE SCIENCE BUILDING - SECTIONS AND DETAILS -  
(ROOF AREA '8', '9' & '10' - ALTERNATE 2)

Designed By: RMT  
Drawn By: DQS  
Checked By: RMT  
Date: 04-22-2024







