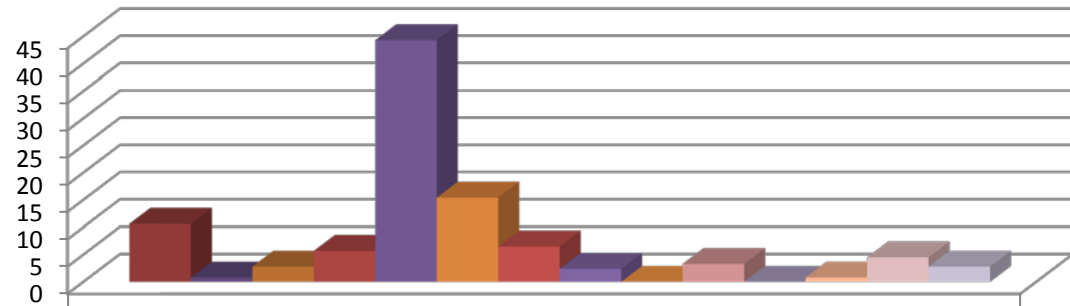


## F1 - Your Plans for Next Year



	2010 (N=246)
■ I have accepted a full-time paid job related to my field of study %	10.6
■ I have accepted a full-time paid job not related to my field of study %	0.8
■ I have accepted a part-time paid job %	2.8
■ I will continue in my current paid job %	5.7
■ I am currently seeking, or plan to seek, paid employment %	44.3
■ I will be going to graduate or professional school full-time next year %	15.4
■ I will be going to graduate or professional school part-time and %	6.5
■ I will take more undergraduate courses next year %	2.4
■ I am neither seeking employment nor planning on attending school next %	0
■ I will be entering or continuing military service %	3.3
■ I will be engaged in volunteer activity (e.g., Peace Corps) %	0
■ I will be starting or raising a family %	0.8
■ I dont know yet %	4.5
■ Other %	2.8