

Key Returners



Kemp

In 2008, Kemp led the Lady Braves with 10.7 points-per game and 7.9 rebounds. Kemp earned all-conference and all-state honors with the Lady Braves last year.



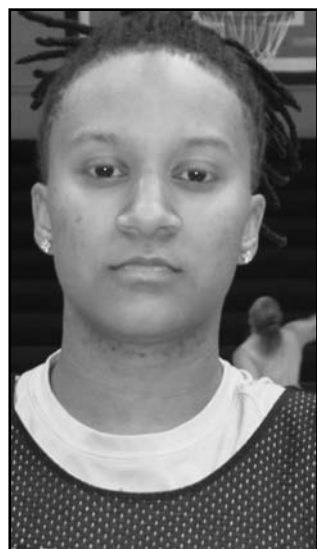
Hunt

Hunt played in 20 games for UNCP last season, dishing out 2.7 assists per game to lead the Black and Gold. Hunt also averaged 2.8 points a contest.



Delk

Delk started 14 games last season for the Lady Braves at the guard position. Delk posted 7.8 points per game with 1.6 assists per contest.



Faison

Last season, Faison was fifth on the Lady Braves' team with a .398 shooting percentage. The guard played in 28 games for the Black and Gold in 2008.

Impact Freshmen



Gallimore

Freshmen Megan Gallimore will be a strong addition to the post for the Black and Gold. Gallimore averaged 12 points and 14 rebounds for Asheboro High School.



Knowler

Raleigh, N.C., native Anya Knowler will be another big addition to the Lady Braves this year, as she's expected to see minutes at the guard and forward positions.

Key Games

Nov. 15 at Coker

First game of the season

Nov. 30 North Carolina Wesleyan

First home game of the season

Dec. 5 at Clayton State

First Peach Belt Game

Jan. 2 at Francis Marion

Matchup with last season's top PBC team

Feb. 27 Flagler

Senior Night

Lady Braves look for key contributions this season

By Matt Smith
Sports Editor

In the 2008-2009 season, the Lady Braves basketball team finished four games under .500 on the year and 3-9 away from the confines of the English E. Jones Center.

But what the Black and Gold bring back to the 2009-2010 season is experience, and lots of it.

The Lady Braves will bring back 10 upperclassmen this season, with potential starts JaToya Kemp, Illya Hunt, Marquena Delk and Talen Faison bringing back a combined 75 games played from last year.

With the combination of upperclassmen and incoming freshmen, UNCP women's basketball head coach Jim Haskins likes what he sees in the team's early practices.

"We have a lot of experience on the perimeter," Haskins said. "We have a lot of our perimeter [players] back. They're showing good leadership. We've got some new, big time players that are kind of learning the ropes and finding out what they're trying to do."

Those returning players helped to lead the team last year to 12 wins, with an average output of 62.5 points a game in 2009.

While the perimeter is stacked with returning players, it is the Black and Gold's inside presence of Kemp that will have the biggest impact for the Lady Braves this season.

In 2008, Kemp lead UNCP in both points per game, with 10.7 a contest, and rebounds per game with 7.9.

The junior racked up all-conference and all-state honors in the process.

In 2009, Kemp will have much needed help

down low as the team adds four new forwards and post players to the team.

Incoming freshman center Megan Gallimore will join Sa'da Ray in the post, with newcomers Anya Knowler and Jasmine Hairston expecting to see minutes at the guard and forward positions.

Haskins stated that the freshmen are progressing well, but are still looking to improve as the season gets under way.

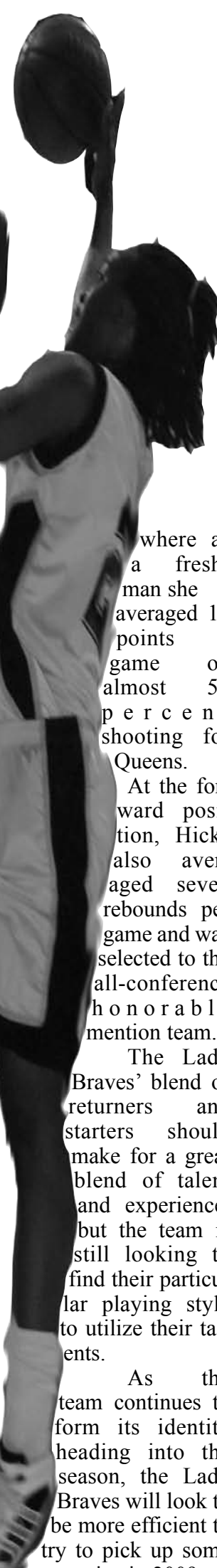
"You know freshmen are always freshmen," Haskins said, "and there is a learning curve and a physical aggression curve and they have to pick up both. But, they're definitely coming around."

Along with Gallimore, Ray, Knowler and Hairston, the Lady Braves will add six new members to the 2009-2010 team.

Sarah Beal, Courtney Bolton, and Sasha Millington will round out the Black and Gold's new incoming freshmen.

Along with the freshmen, incoming transfer Markeisha Hicks will join the Lady Braves. Hicks, who suffered a knee injury last season with Queens, played just 44 minutes for the Royals last season.

Hicks looks to get back to her 2007 form,



Last season, the Black and Gold lost eight games by seven points or less.

In 2009, the daunting Peach Belt schedule remains tough, but Haskins said that the team will take it one game at a time to try to pull out wins in some of those close losses.

"Every Peach Belt game is a tough game," Haskins said. "There are a lot of good teams in our league, but night in and night out we have to play hard."

"I can't single out any specific game," he said, "but conference games are going to be extremely important."

The Lady Braves will begin this season with five road games before heading back to the English E. Jones Center to face North Carolina Wesleyan on Nov. 20.

So with a stellar nucleus returning and having freshmen that are willing to learn, how does Haskins see the team coming together going into this season?

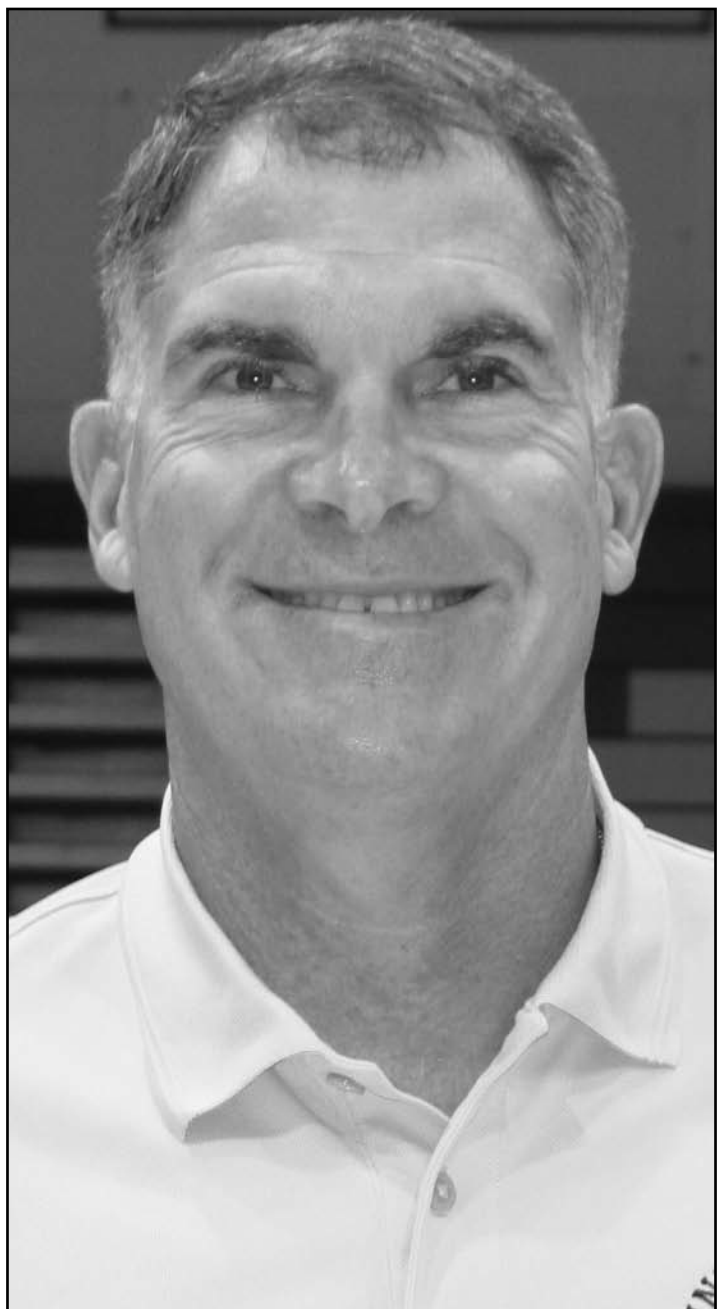
"I think we'll be similar to where we were last season," Haskins said.

"We'll be a little more athletic and try to create a little more offense with our defense. We'd like to play a little in transition if we can, as long as we can do it under control."

"We've got more size than in the past," he said. "I think we have some physical girls under the basket that can help us play more inside-out and that can really help us."

With a strong group of returners, athletes willing to run up and down the court and an up-tempo offensive style in the works, Black and Gold women's basketball fans have much to be excited about at the start of the 2009-2010 season.

Meet The Coach



Haskins

UNCP women's basketball head coach Jim Haskins enters his sixth year with the Lady Braves in 2009. Haskins had led the team to a 67-73 overall record. Before taking over the Lady Braves, Haskins was the men's team's head coach for 10 seasons where he led the Braves to an overall record of 105-164.

In 2004, Haskins was named the Peach Belt Coach of the year after leading the Lady Braves to an 18-10 record, including an 11-2 mark at home. Haskins led the team to a Peach Belt North Division crown, and coached the Lady Braves' first Peach Belt Conference player of the year that season in Danielle Richardson.

Along with his head coaching duties, Haskins is the Assistant Athletic Director in Internal Affairs.

Before his time at UNCP, Haskins earned his bachelor's degree at the University of North Carolina at Wilmington, where he captained the Seahawks to a 19-10 season.

2008 Results

12-16 Overall Record

8-12 Peach Belt Conference Record

Eighth Place Conference Finish