

# FALL 2009 EXAM SCHEDULE

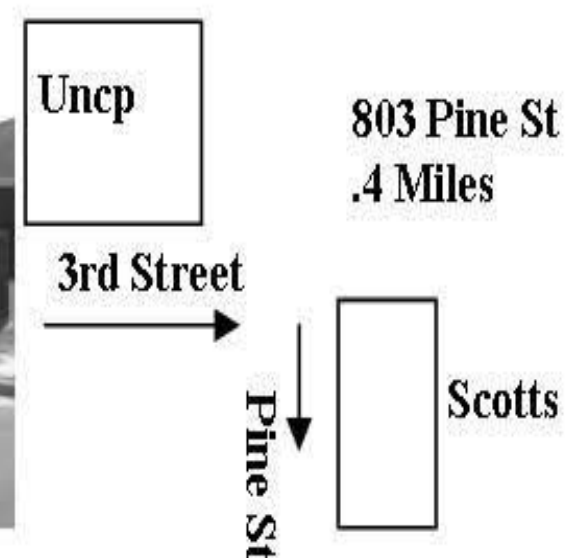
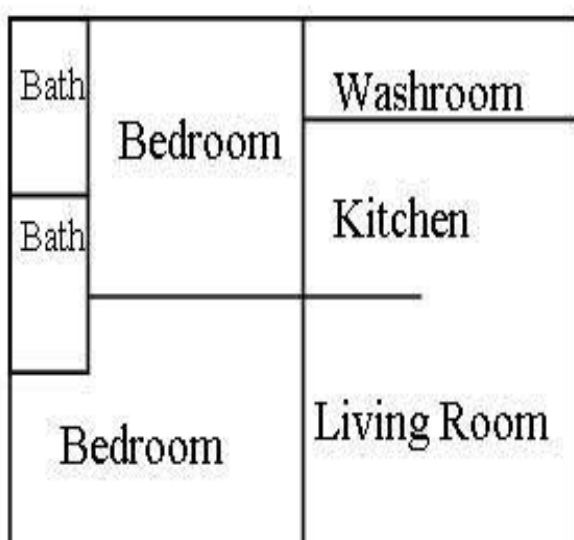
| Hour                             | Monday<br>Dec. 7                    | Tuesday<br>Dec. 8                   | Wednesday<br>Dec. 9                  | Thursday<br>Dec. 10                | Friday<br>Dec. 11                    |
|----------------------------------|-------------------------------------|-------------------------------------|--------------------------------------|------------------------------------|--------------------------------------|
| 8 a.m.<br>until<br>10:30 a.m.    | Classes meeting on MWF at 8 a.m.    | Classes meeting on TR at 9:30 a.m.  | Classes meeting on MWF at 9 a.m.     | Classes meeting on TR at 8 a.m.    | Classes meeting on MWF at 11:30 a.m. |
| 10:45 a.m.<br>until<br>1:15 p.m. | Classes meeting on MWF at 10 a.m.   | Classes meeting on TR at 12:30 p.m. | Classes meeting on MWF at 12:30 p.m. | Classes meeting on TR at 11 a.m.   | Classes meeting on MWF at 1:30 p.m.  |
| 1:30 p.m.<br>until<br>4 p.m.     | Classes meeting on MWF at 2:30 p.m. | Classes meeting on TR at 2 p.m.     | Classes meeting on MWF at 3:30 p.m.  | Classes meeting on TR at 3:30 p.m. | Open                                 |
| 4:15 p.m.<br>until<br>6:45 p.m.  | Classes meeting on MWF at 4:30 p.m. | Classes meeting on TR at 5 p.m.     | Classes meeting on MWF at 5:30 p.m.  |                                    | Open                                 |
| 7 p.m.<br>until<br>9:30 p.m.     | Classes meeting on M at 6:30 p.m.   | Classes meeting on T at 6:30 p.m.   | Classes meeting on W at 6:30 p.m.    | Classes meeting on R at 6:30 p.m.  | Open                                 |

## Scotts Apartment Rentals

*Tired Of Cramped Space And Lots Of Traffic. Then Scott's Is The Place For You  
900 sq Feet*

*2 Bed 2 Bath  
For Only \$600.00  
Per Month.*

*Features:  
Alarm System  
Washer & Dryer  
Stove & Ref  
Grilling Area  
3 Parking Spaces*



**Contact: Cris Scott 910-740-9955 [www.uncpstudentapartments.com](http://www.uncpstudentapartments.com)**