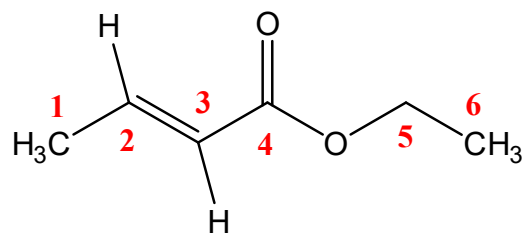


Ethyl Crotonate (trans isomer)



Assignment	¹ H Chemical shift	¹ H Multiplicity	¹ H Integration	¹³ C Chemical Shift
1	1.856	Doublet of doublets	3.11	16.873
2	6.824-7.073	Doublet of quartets	0.96	143.236
3	5.819	Doublet of quartets	0.93	122.276
4	n/a	n/a	n/a	165.301
5	4.152	Quartet	2.00*	59.074
6	1.257	Triplet	3.20	13.417

*Integration calibrated using this value